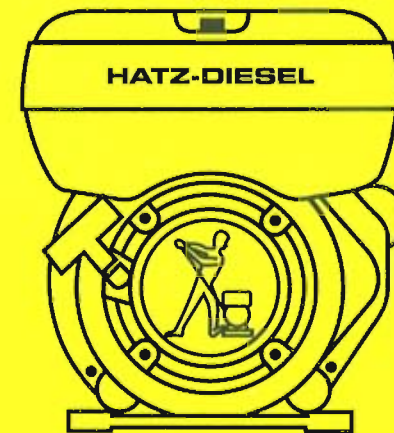




MOTORENFABRIK HATZ • D-94099 Ruhstorf • Germany
Tel.: 0 85 31 / 319-0 • Telex: 57260 • Telefax: 0 85 31 / 31 94 18
eMail: hatz.marketing@t-online.de • http: // www.hatz.com

Original-Ersatzteile
Original-spare parts
Pièces de rechange d'origine
Repuestos originales
Pezzi di ricambio originali



1B30
1B20

Bestellung für HATZ-Original-Ersatzteile

Order for HATZ Original spare parts

Commande de pièces d'origine HATZ

Pedido de repuestos originales HATZ

Ordine parti di ricambio originali HATZ

1

Besteller / Customer / Client / Cliente / Cliente

2

TYP	KENNZ.
MOTOR/FABRIK NO.	
MIN ⁻¹	



3

Ersatzteilliste Nr./ Spare parts list no./ Liste des pièces de rechange no./ Lista de repuestos No./ Lista ricambi n.
1 B 20 . 13 <input type="checkbox"/>
1 B 30 . 10 <input type="checkbox"/>

4

Stück / Qty / Q.tà	HATZ Ident No.	Stück / Qty / Q.tà	HATZ Ident No.

5

Versandart / Mode of dispatch / Mode d'expédition / Despacho deseado / Modo di spedizione	
Post / Surface / Poste / Correo / Posta <input type="checkbox"/>	Luftfracht / airfreight / frêt aérien / flete aereo / Via aerea <input type="checkbox"/>
Express / express / exprès / expreso / Espresso <input type="checkbox"/> <input type="checkbox"/>

6

Versandadresse / Consignee / Adresse destination / Dirección / Indirizzo di destinazione
--

Bestellung an: Order at: Commande à: Pedido a:

- die nächste HATZ-Servicestelle (siehe Servicestellenverzeichnis)
- your nearest HATZ service station (see service-list)
- votre station-service HATZ la plus proche (voir liste "Service")
- al servicio HATZ más cercano (ver cuaderno de Servicio)
- al più vicino centro di servizio HATZ (vedi lista centri autorizzati)

MOTORENFABRIK HATZ
D-94099 RUHSTORF
Tel: 0 85 31 / 319 - 0
Fax: 0 85 31 / 31 94 21

Inhaltsverzeichnis		Index	Tafel-Nr. Table No.
M ..	Grundmotor	Basic engine	
00	Ersatzteilsätze,	Spare parts kits,	01
34	Zubehör	accessories	02
01	Kurbelgehäuse	Crankcase	03
02	Kurbelwelle	Crankshaft	04
04	Nockenwelle	Camshaft	05
05, 06	Kolben, Pleuel, Zylinder	Piston, conrod, cylinder	06
07	Zylinderkopf	Cylinder head	07
10, 32	Ölpumpe, Regler, Drehzahlverstellung	Oil pump, governor, speed control	08
11	Steuerdeckel	Timing cover	09
13, 17	Gebälse, Schwungrad	Blower, flywheel	10
14	Einspritzausrüstung	Injection equipment	11
15	Reversierstarter	Recoil starter	12
26	Luftführung	Air ducting	13
31	Kurbelgehäuseentlüftung	Crankcase breathing system	14
A ..	Zusatzausrüstung	Equipements	
01	Kraftstoffbehälter	Fuel tank	15
02	Luftfilter	Air filter	16
03	Abgasdämpfer	Exhaust silencer	17
05	Starter, Generator	Starter, alternator	18
05, 10	Armaturen, Leitungen	Electric equipment, wirings	19

Sommaire		Indice	
M ..	Moteur de base	Motor de base	
00	Jeu de pièces de rechange,	Juegos de recambios,	01
34	accessoires	accessorios	02
01	Carter moteur	Caja cigueñal	03
02	Vilebrequin	Cigueñal	04
04	Arbre à cames	Arbol de levas	05
05, 06	Piston, bielle, cylindre	Embolo, biela, cilindro	06
07	Culasse	Culata	07
10, 32	Pompe a huile, regulateur regime, reglage regime	Bomba de aceite, regulador, ajuste de revoluciones	08
11	Couvercle distribution	Tapa de mando	09
13, 17	Soufflerie, volant	Ventilador, volante	10
14	Equipment d'injection	Equipo de inyección	11
15	Demarreur reversible	Arrancador reversible	12
26	Carter ventilation	Conducción de aire	13
31	Reniflard	Purgador	14
A ..	Accessoires	Equipos	
01	Reservoir à carburant	Depósito combustible	15
02	Filtre à air	Filtro de aire	16
03	Silencieux	Silenciador	17
05	Demarreur, alternateur	Arrancador, alternator	18
05, 10	Equipment électrique, cable	Equipo eléctrico, cables	19

M ..	Motore di base	
00	Serie guarnizioni	01
34	kit accessori	02
01	Basamento motore	03
02	Albero a gomito	04
04	Albero a camme	05
05, 06	Pistone, biella, cilindro	06
07	Testa	07
10, 32	Pompa olio, regolatore di giri, Comando acceleratore	08
11	Coperchio distribuzione	09
13, 17	Ventilatore, volano	10
14	Equipaggiamento di iniezione	11
15	Avviamento a strappo	12
26	Carter ventilatore	13
31	Sfiato basamento	14
A ..	Accessori	
01	Serbatoio	15
02	Filtro aria	16
03	Scarico	17
05	Motorino avviamento, alternatore	18
05, 10	Equipaggiam. elettrico, cablaggio	19

M 00

Ersatzteilsätze
Spare part kits
Jeux de pièces de rechange
Juegos de piezas de recambios
Serie guarnizioni

Tafel Nr. |
Tabl. No. |
Tavola N. |

01

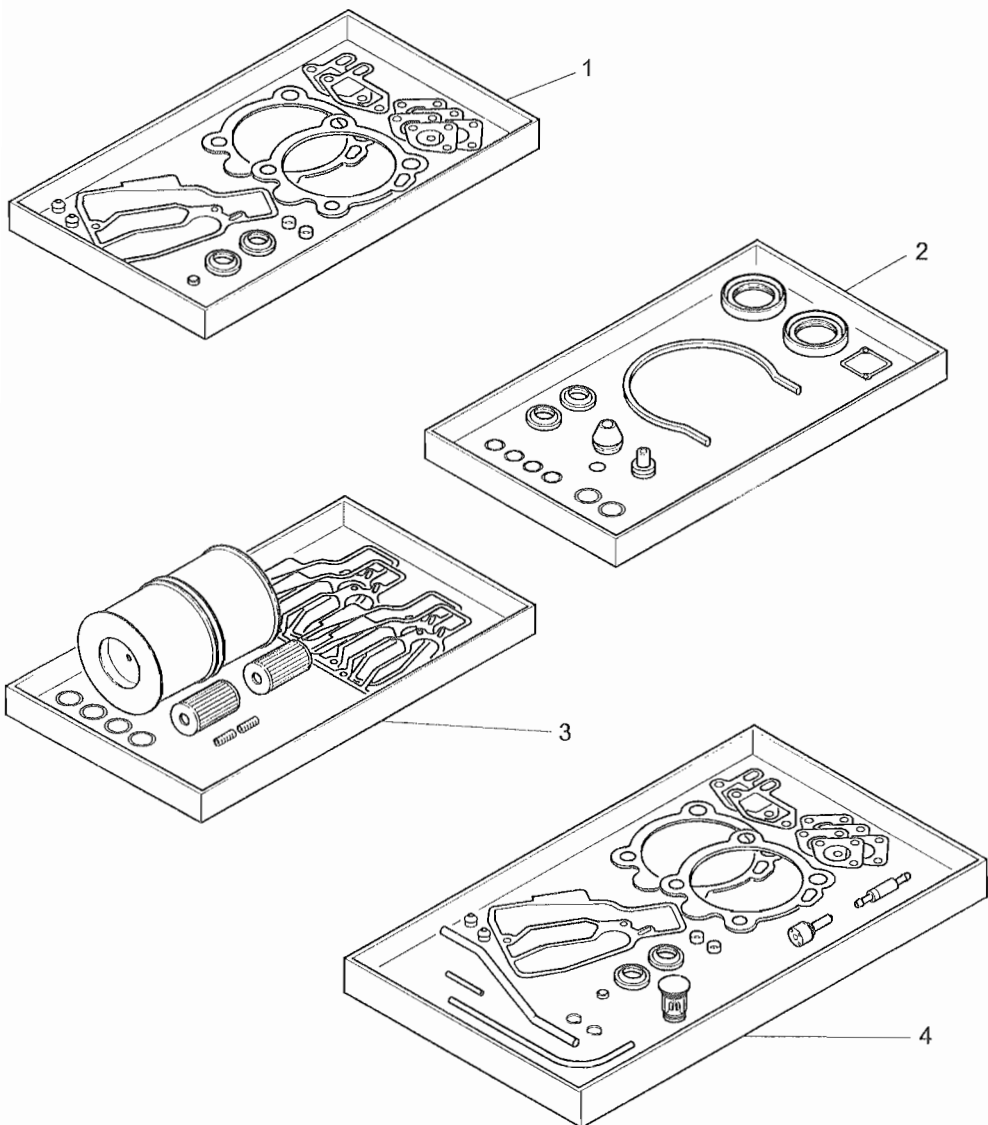


Fig.-No.	HATZ Ident-No.	Stück Qty.		P / W d / D	Bemerkungen Notes	
		1B20	1B30			
W:	Im Wartungssatz enthalten. Incl. in maintenance kit. Contenu dans le jeu d'entretien. Incluido en el juego de mantenimiento. Contenuto nella serie manutenzione.				P:	Im Pannensatz enthalten. Incl. in emergency kit. Contenu dans le jeu secur. Incluido en el juego para averias. Contenuto nella serie di prima necessità.
d:	Im Dichtungssatz für Zyl.-K. enth. Incl. in gasket set for cyl. head. Contenu dans le jeu de joint pour culasse. Incluido en el juego de juntas p. culata. Contenuto nella serie guarnizioni per testa.				D:	Im Dichtungssatz Kurbelgeh. Incl. in gasket set crankcase. Contenu dans le jeu de joints carter moteur. Incluido en el juego de juntas caja cigueñal. Contenuto nella serie guarnizioni basamento.
					1: Anzahl pro Satz - Qty. per kit. Quantite par jeu. Cantidad por juego. Quantità per serie.	
1	015 541 00	1	-	P1	Dichtungssatz für Zylinderkopf. Gasket set for cyl. head. Jeu de joint pour culasse. Juego de juntas para culata. Serie guarnizioni per testa.	
1	015 822 00	-	1			
2	015 542 00	1	-		Dichtungssatz für Kurbelgehäuse. Gasket set for crankcase. Jeu de joints p. carter moteur. Juego de juntas para caja cigueñal. Serie guarnizioni basamento.	
2	015 823 00	-	1			
3	015 543 00	1	-		Wartungssatz für 1000 h. 1000 hours maintenance kit. Kit d'entretien 1000 heures - Juego de piezas para servicio 1000 horas. Kit di manutenzione a 1000 ore.	
3	015 824 00	-	1			
4	015 544 00	1	-		Pannensatz - Emergency kit. Kit de secours - Juego para averias Kit di prima necessità.	
4	015 825 00	-	1			

M 34

Zubehör
Accessories
Accessoires
Accessorios
Kit accessori

Tafel Nr.
Tabl. No.
Tavola N.

02

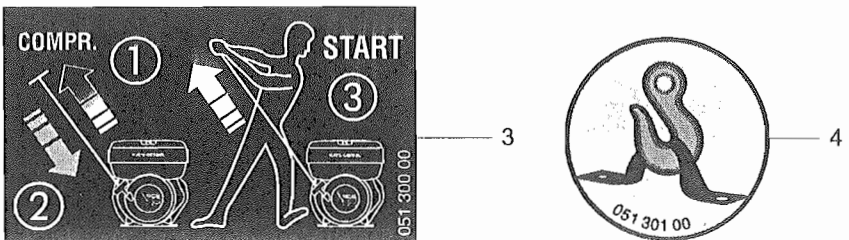
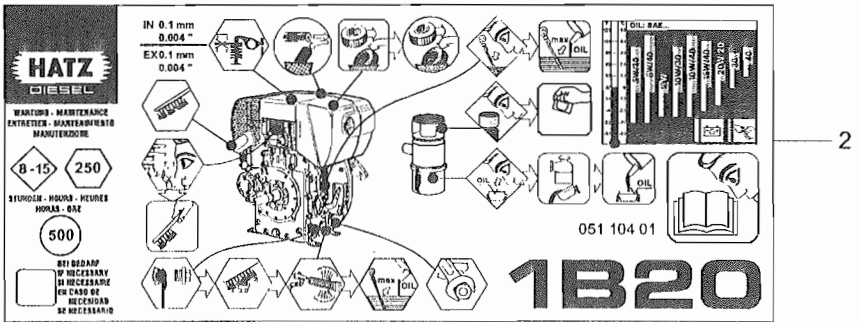
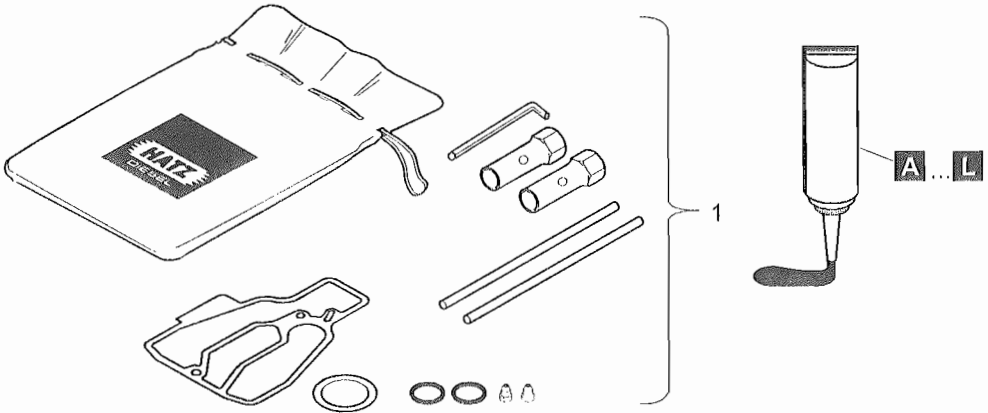


Fig.-No.	HATZ Ident-No.	Stück Qty.	P / W d / D	Bemerkungen Notes
		1B20	1B30	
1	013 310 00	1	-	Zubehörpaket - Accessoires kit
1	015 787 00	-	1	Sort. accessoires Juego de accesorios Serie accessori
2	051 104 01	1	-	160 x 67 mm
2	051 201 00	-	1	
3	051 300 00	1	1	
4	051 301 00	1	1	

Dicht- und Klebstoffe
Sealing- and bonding adhesives
Etanchéifiant et Colle

Materias para empaquetar y pegar
Adesivi e collanti

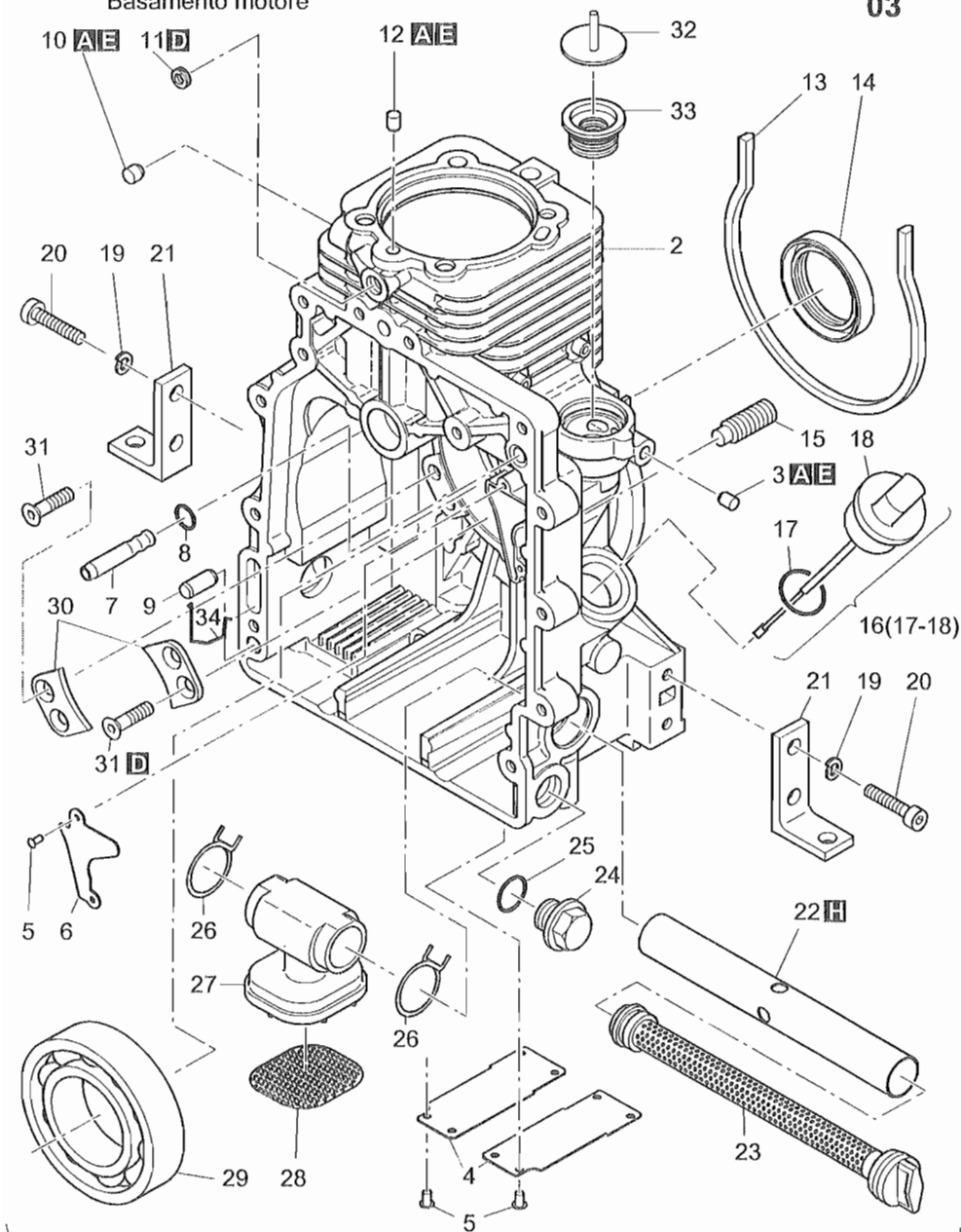
A = 502 230 01	Loctite Activator N	500 ml	} siehe Hinweis auf den einzelnen Bildtafeln as specified in the individual tables suivant les remarques sur les tableau correspondant según las indicaciones de las tablas correspondientes seguire le indicazioni sul quadro corrispondente
B = 502 231 00	Loctite 573	50 ml	
C = 502 232 00	Loctite 601	50 ml	
D = 502 233 00	Loctite 221	50 ml	
E = 502 234 00	Loctite 648	10 ml	
F = 502 238 00	Technicoll 8058	0,75 kg	
+ 502 239 00	Technicoll 8367	0,75 kg	
G = 502 565 01	Loctite IS 407	20 g	
H = 502 825 01	Silicon	30 ml	
J = 502 830 02	Hochtemp. Paste	1000 g	
K = 503 426 00	Hochtemp. Fett	100 g	
L = 502 566 00	Silicon sealer	100 g	

Kurbelgehäuse
Crankcase
Carter moteur
Caja cigueñal
Basamento motore

Tafel Nr.
Tabl. No.
Tavola N.

M 01

03



1(2-12)

Fig.-No.	HATZ Ident-No.	Stück Qty.		P / W d / D	Bemerkungen Notes
		1B20	1B30		
1	015 522 00	1	-		
1	015 827 00	-	1		
2	-----	-	-		
3	034 550 00	1	1		6,5 x 7
4	041 059 00	2	-		
4	041 105 00	-	2		
5	400 026 00	10	10		3,2
6	041 054 00	1	-		
6	013 331 00	-	1		
7	050 843 00	1	1		
8	504 403 00	1	1	D1	8 x 1,5
9	502 491 01	1	1		8 m 6 x 20
10	040 055 00	1	-		8,5 x 5
10	041 238 00	-	1		
11	500 623 00	1	1		M 10 x 1 DIN 908-5.8 A3C
12	041 128 00	1	1		
13	040 980 00	1	-	D1	331,5 mm
13	041 126 00	-	1		419 mm
14	504 232 00	1	-	D1	40 x 55 x 10 AS
14	504 498 00	-	1		42 x 55 x 10 AS
15	041 152 00	1	1		M 12 x 1,5 x 35 45 H A3C TUF 360
16	013 160 00	1	1		
17	501 538 00	1	1		22 x 3
18	-----	-	-		
19	502 085 00	8	8		8 DIN128 A3C
20	041 219 00	8	8		M 8 x 35 A3C
21	040 993 01	4	4		
22	041 057 00	1	1		
23	015 427 01	1	1		
24	503 731 00	1	1	W1	AM 22 x1,5 MAGN.
25	504 591 00	1	1	D2, W4	A 22 x 27 DIN 7603 - AI
26	050 369 00	2	2		
27	041 044 00	1	1		
28	041 045 00	1	1		
29	504 233 00	1	-		
29	504 497 00	-	1		
30	040 944 00	2	2		
31	503 280 00	4	4		AM 6 x 16 17065-8.8 Zn
32	015 558 00	1	1		
33	035 687 00	1	1		
34	041 155 00	1	1		

M 02

Kurbelwelle
Crankshaft
Vilebrequin
Cigüeñal
Albero a gomito

Tafel Nr.
Tabl. No.
Tavola N.

04

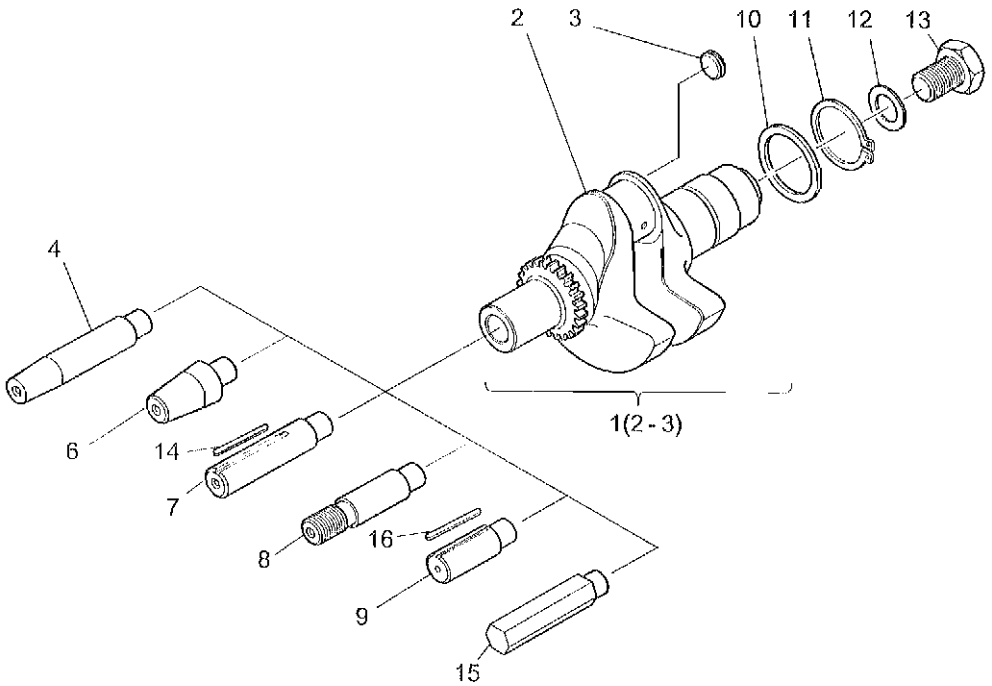


Fig.-No.	HATZ Ident-No.	Stück Qty.	P / W d / D	Bemerkungen Notes
		1B20	1B30	
1	015 527 00	1	-	
1	013 342 00	-	1	
2	-----	-	-	
3	041 253 00	1	1	
4	050 996 00	1	-	Nr. 4 SAE Generator
4	051 274 00	-	1	Nr. 4 SAE Generator
5	-----	-	-	
6	050 997 00	1	1	Nr. 6 ital. 23 keg., con.
7	050 998 00	1	-	Nr. 7 3/4" zyl., cil.
7	051 276 00	-	1	Nr. 2 - \varnothing 1" zyl., cil.
8	050 999 00	1	-	Nr. 8 SAE 3/4 - 16 UNF
8	051 277 00	-	1	Nr. 1 - SAE \varnothing 1" - 14 UNS 2A
9	051 000 00	1	-	\varnothing 20 zyl., cil.
9	051 278 00	-	1	\varnothing 25 zyl., cil.
10	400 325 00	1	-	40 x 50 x 2,5 DIN 988
10	400 656 00	-	1	45 x 55 x 3,0
11	501 206 00	1	-	A 40 x 1,75 DIN 471
11	500 216 00	-	1	A 45 x 1,75 DIN 471
12	041 142 01	1	1	18,5 x 37 x 5
13	504 436 00	1	1	M 18 x 1,5 x 55 DIN 961 - 10.9
14	041 204 00	1	-	
15	051 073 01	1	-	27 mm
15	xxx xxx xx	-	1	30 mm
16	504 634 00	1	-	A 5 x 5 x 36DIN 6885

M 04

Nockenwelle
Camshaft
Arbre à cames
Arbol de levas
Albero a camme

Tafel Nr.
Tabl. No.
Tavola N.

05

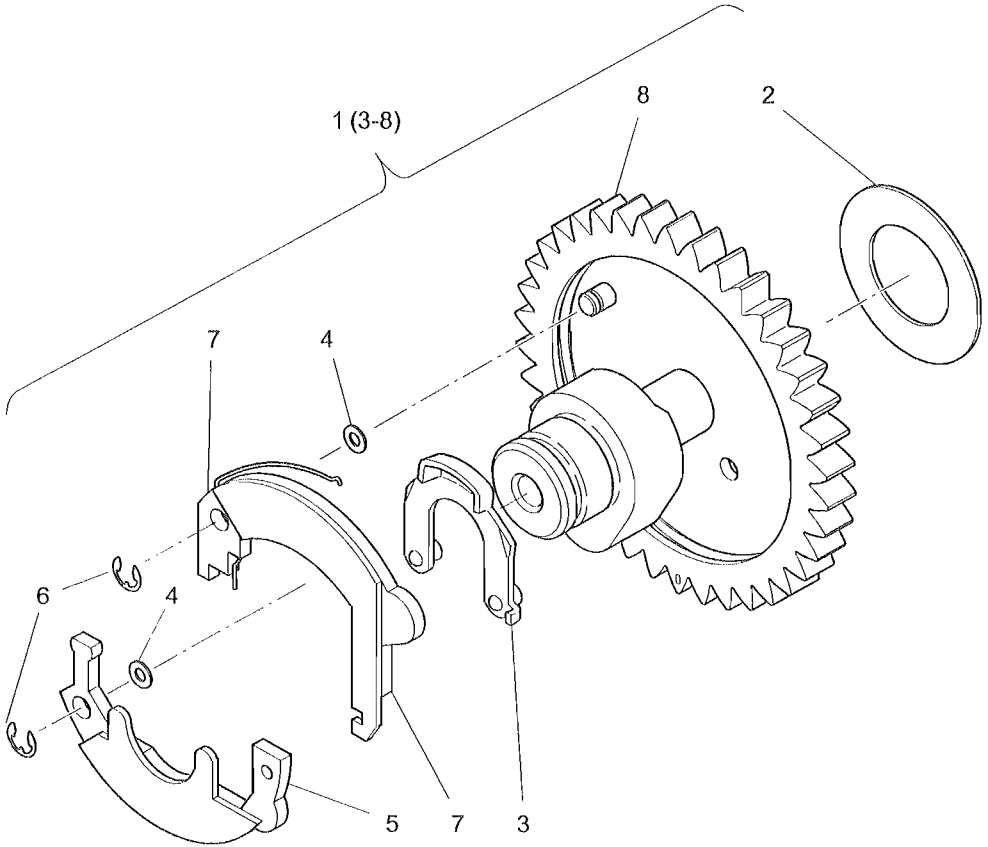


Fig.-No.	HATZ Ident-No.	Stück Qty.	P / W d / D	Bemerkungen Notes
		1B20	1B30	
1	015 035 02	1	1	
2	041 217 00	0...1	0...1	0,9 mm 23 x 38 x 0,9
2	041 121 00	0...1	0...1	1,0 mm 23 x 38 x 1,0
2	041 122 00	0...1	0...1	1,1 mm 23 x 38 x 1,1
2	041 123 00	0...1	0...1	1,2 mm 23 x 38 x 1,2
2	041 251 00	0...1	0...1	1,3 mm 23 x 38 x 1,3
2	041 252 00	0...1	0...1	1,4 mm 23 x 38 x 1,4
3	013 264 00	1	1	
4	501 232 00	2	2	5 x 10 x 0,5 DIN 988
5	013 266 00	1	1	
6	502 553 00	2	2	3,2 DIN 6799
7	013 265 00	1	1	
8	-----	-	-	

M 05

Kolben, Pleuel
Piston, Conrod
Piston, bielle
Embolo, biela
Pistone, biella

M 06

Zylinder
Cylinder
Cylindre
Cilindro
Cilindro

Tafel Nr.
Tabl. No.
Tavola N.

06

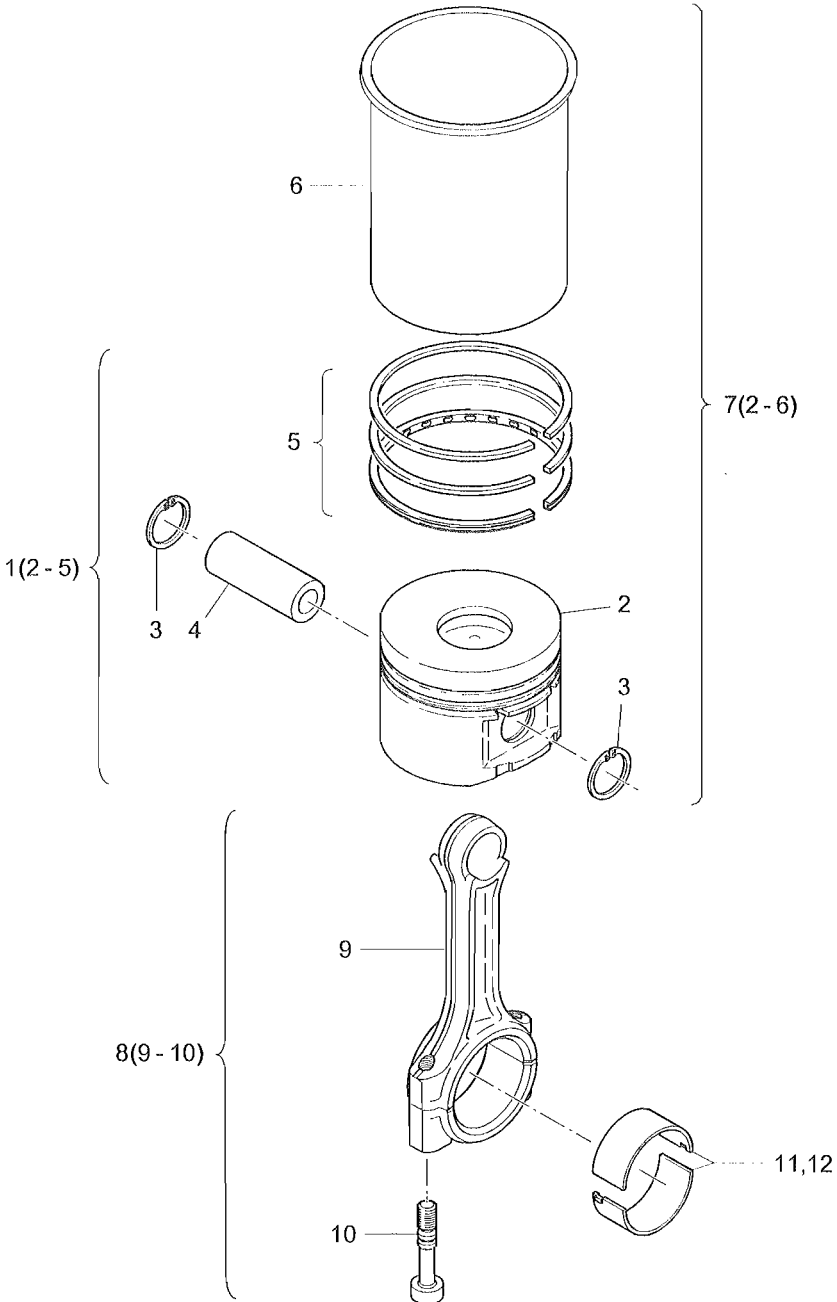


Fig.-No.	HATZ Ident-No.	Stück Qty.	P / W d / D	Bemerkungen Notes
		1B20	1B30	
1	013 171 00	1	-	69 mm
1	013 285 00	-	1	80 mm
2	-----	-	-	
3	504 255 00	2	-	
3	504 640 00	-	2	
4	504 254 00	1	-	
4	504 636 00	-	1	
5	013 172 00	1	-	
5	013 286 00	-	1	
6	-----	-	-	
7	015 545 00	1	-	
7	015 826 00	-	1	
8	015 001 00	1	-	
8	013 292 01	-	1	
9	-----	-	-	
10	050 469 00	2	-	
10	041 131 00	-	2	
11	015 757 00	1	-	
11	015 821 00	-	1	
12	015 819 00	1	-	-0,5 mm
12	015 820 00	-	1	-0,5 mm

M 07

Zylinderkopf
Cylinder head
Culasse
Culata
Testa

Tafel Nr.
Tabl. No.
Tavola N.

07

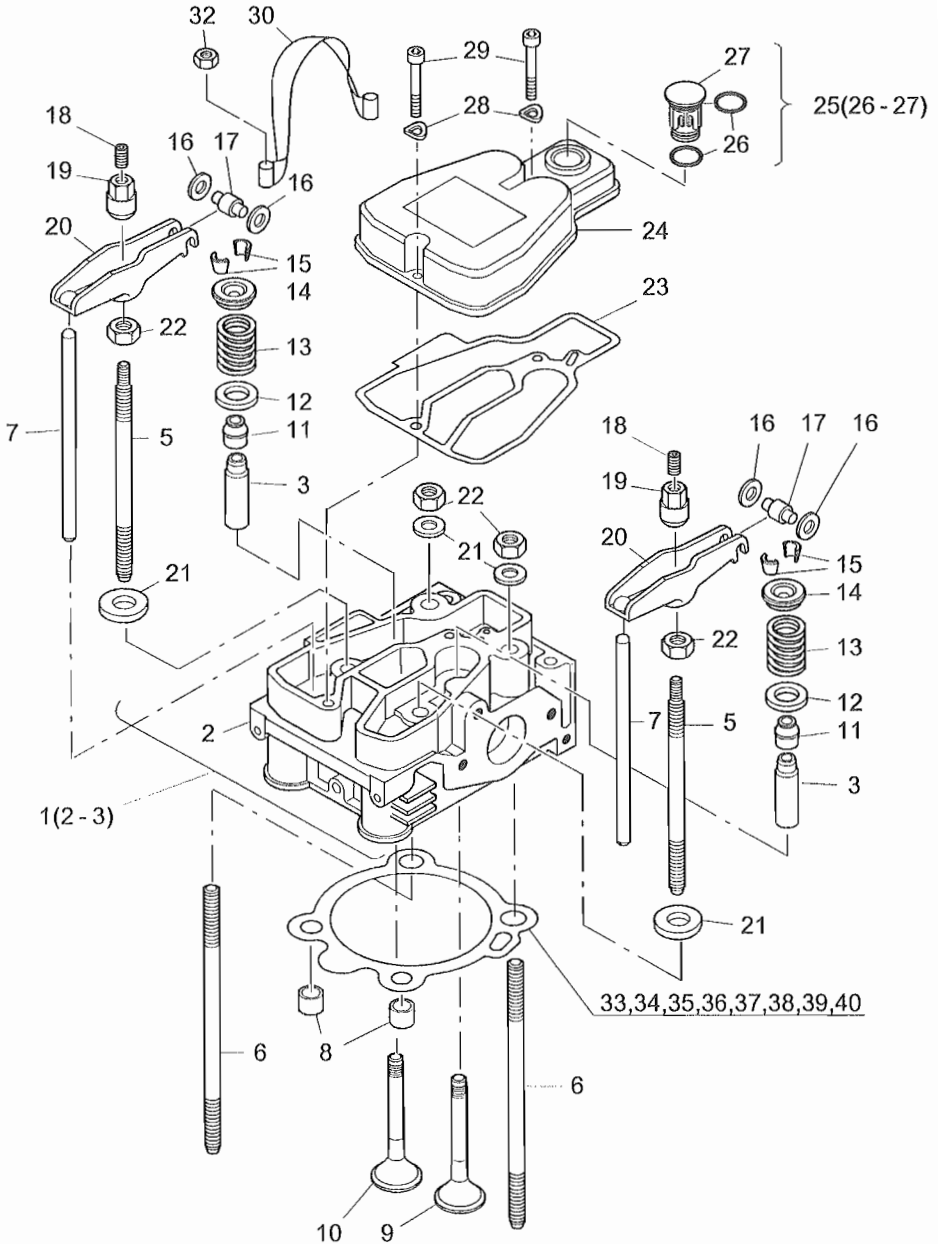


Fig.-No.	HATZ Ident-No.	Stück Qty.		P / W d / D	Bemerkungen Notes
		1B20	1B30		
1	015 002 20	1	-		
1	015 298 01	-	1		
2	-----	-	-		
3	051 194 00	2	-		
3	051 295 00	-	2		
4	-----	-	-		
5	050 975 00	-	2		141 mm (M 10 - M 8)
6	050 625 00	4	-		128 mm (M 8)
6	050 974 00	-	2		148 mm (M 10)
7	050 540 00	2	-		
7	050 989 00	-	2		174,8 mm
8	041 255 00	2	-	d2	
8	041 254 01	-	2	d2	
9	050 532 00	1	-		
9	050 930 00	-	1		
10	050 533 00	1	-		
10	050 931 00	-	1		
11	504 258 00	2	2	d2	
12	040 937 00	2	2		
13	040 936 00	2	-		
13	041 135 00	-	2		
14	040 938 00	2	2		
15	504 257 00	2	2		
16	504 451 00	4	4		6 x 12 x 1,2 DIN 988
17	050 911 00	2	2		
18	503 580 00	2	2	W2	M 8 x 10 DIN 913 - A3C Tuf.
19	050 547 00	2	2		
20	050 509 00	2	-		
20	050 982 01	-	2		
21	050 612 01	4	-		8,1 x 20 x 3
21	050 993 00	-	4		10,1 x 24 x 3
22	503 643 00	4	-		M 8 DIN 934 - 10.9 A3C
22	503 966 00	-	4		M 10 DIN 934-10 A3C

M 07

Zylinderkopf
Cylinder head
Culasse
Culata
Testa

Tafel Nr.
Tabl. No.
Tavola N.

07

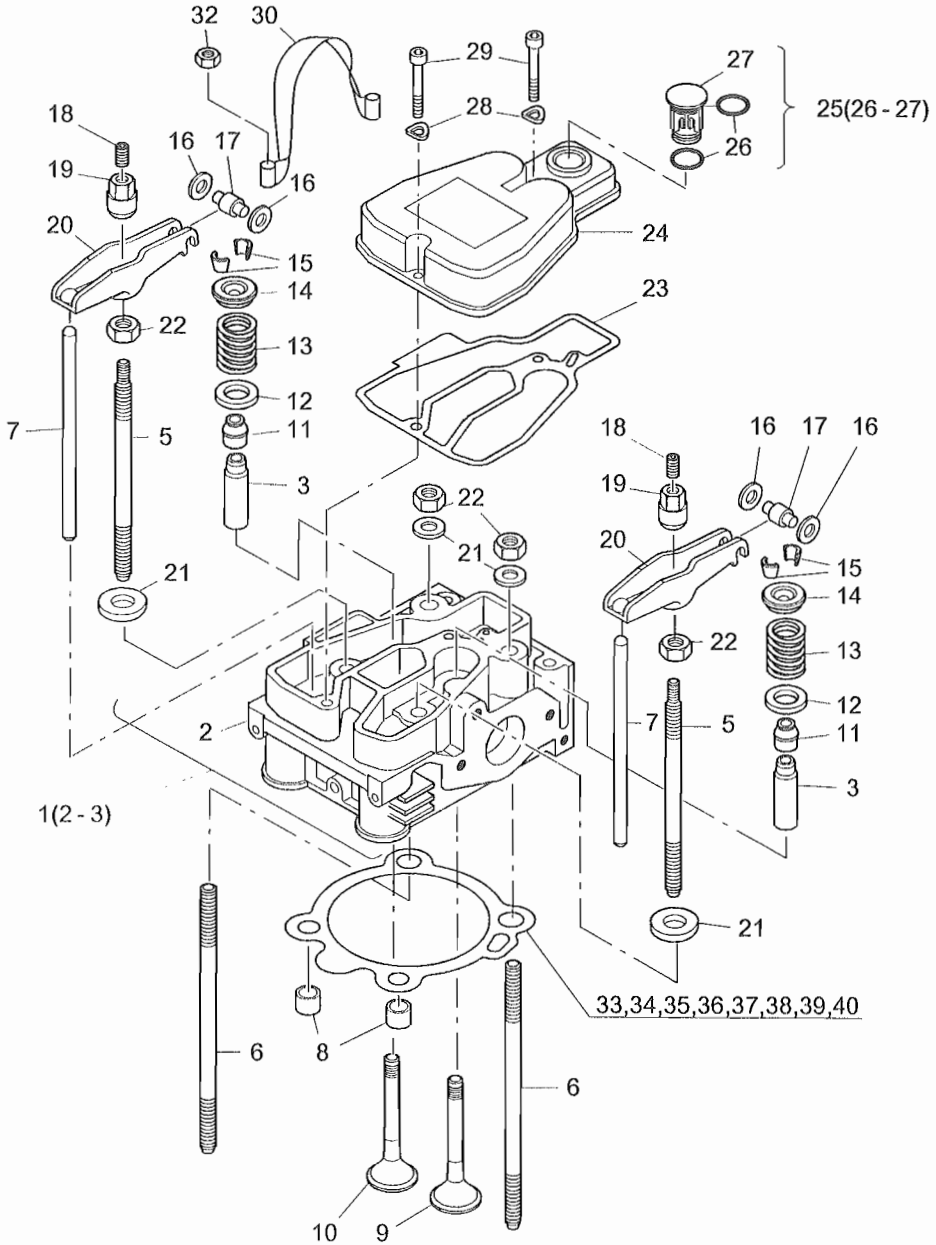


Fig.-No.	HATZ Ident-No.	Stück Qty.		P / W d / D	Bemerkungen Notes
		1B 20	1B 30		
23	050 557 00	1	-	d1,W4	
23	050 933 01	-	1	d1,W4	
24	050 473 00	1	-		
24	050 927 01	-	1		
25	015 096 00	1	1	P1	
26	504 259 00	2	2		16 x 2
27	-----	-	-		
28	500 812 00	2	2		A6 DIN 137 - A3C
29	503 749 00	2	2		M 6 x 35 DIN 912 - 8.8 A3C
30	041 176 00	1	-		
30	041 177 00	-	1		
31	-----	-	-		
32	501 295 00	2	-		M 8 DIN 985 - A3C
32	504 532 00	-	2		M 10 SSN 003 ZN
33	050 594 00	0...1	-		0,3 mm
33	050 963 01	-	0...1		0,3 mm
34	050 595 00	0...1	-	d1	0,4 mm
34	050 964 01	-	0...1		0,4 mm
35	050 596 00	0...1	-	d1	0,5 mm
35	050 965 01	-	0...1		0,5 mm
36	050 597 00	0...1	-		0,6 mm
36	050 966 01	-	0...1		0,6 mm
37	050 598 00	0...1	-		0,7 mm
37	050 967 01	-	0...1		0,7 mm
38	050 599 00	0...1	-		0,8 mm
38	050 968 01	-	0...1		0,8 mm
39	050 600 00	0...1	-		0,9 mm
39	050 969 01	-	0...1		0,9 mm
40	050 601 00	0...1	-		1,0 mm
40	050 970 01	-	0...1		1,0 mm

Ölpumpe, Regler
 Oil pump, governor
 Pompe a huile, regulateur régime
 Bomba de aceite, regulador
 Pompa olio, regolatore di giri

M 10

M 32

Drehzahlverstellung
 Speed control
 Réglage régime
 Ajuste de revolutions
 Comando acceleratore

Tafel Nr.
 Tabl. No.
 Tavola N.
08

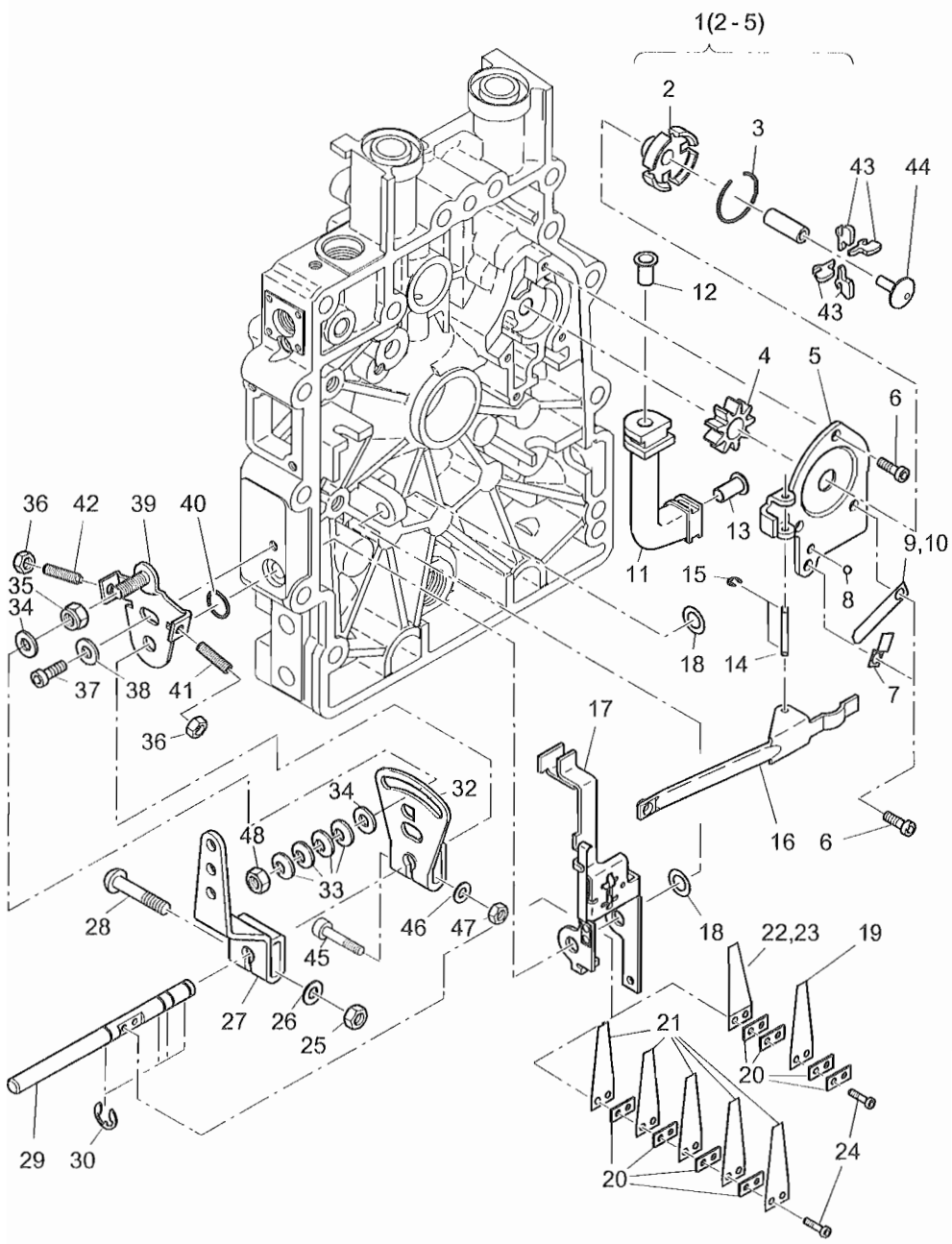


Fig.-No.	HATZ Ident-No.	Stück Qty.	P / W d / D	Bemerkungen Notes
		1B20	1B30	
1	015 302 00	1	1	
2	-----	-	-	
3	504 349 01	1	1	RB25 DIN 7993
4	-----	-	-	
5	-----	-	-	
6	504 294 00	4	4	M5 x 12 DIN 6912 - 8.8
7	050 971 00	1	1	
8	504 479 00	1	1	3,5 mm Kl. III
9	-----	-	-	
10	050 973 00	1	1	0,4 mm
11	041 029 00	1	1	
12	504 474 00	1	1	A8 x 0,5 x 12 DIN 7340 - St
13	504 475 00	1	1	A10 x 0,75 x 12 DIN 7340 - St
14	050 786 00	1	1	
15	504 348 00	2	2	1,9 DIN 6799
16	050 794 00	1	1	
17	015 304 01	1	1	
18	504 224 00	2	2	8 x 14 x 1,0 DIN 988
18	501 258 00	0...2	0...2	8 x 14 x 0,5 DIN 988
19	050 789 00	1	1	
20	050 798 00	4	4	
21	050 789 00	5	5	0,3 mm 3600 min ⁻¹
22	051 132 00	0...1	0...1	0,4 mm 12° < 3000 min ⁻¹
23	051 249 00	0...1	0...1	0,4 mm 19° < 3000 min ⁻¹ Gen.
24	504 350 00	2	2	3 x 12 DIN 912 - 8.8
25	501 444 00	1	1	M 6 DIN 934 - 8 A3C
26	501 445 00	1	1	6,4 DIN 125 - St A3C
27	040 956 00	1	1	
28	039 273 00	1	1	M 6 x 32
29	050 793 00	1	1	
30	500 927 00	4	4	7 DIN 6799 A3C
31	-----	-	-	
32	041 154 00	1	1	
33	503 469 00	4	4	12 x 6,2 x 0,6
34	051 100 10	2	2	7,1 x 17,9 x 2
35	400 283 00	1	1	M 6 SSN 440 - 8

M 10 Ölpumpe, Regler
 Oil pump, governor
 Pompe a huile, regulateur régime
 Bomba de aceite, regulador
 Pompa olio, regolatore di giri

M 32 Drehzahlverstellung
 Speed control
 Réglage régime
 Ajuste de revolutions
 Comando acceleratore

Tafel Nr.
 Tabl. No.
 Tavola N.
08

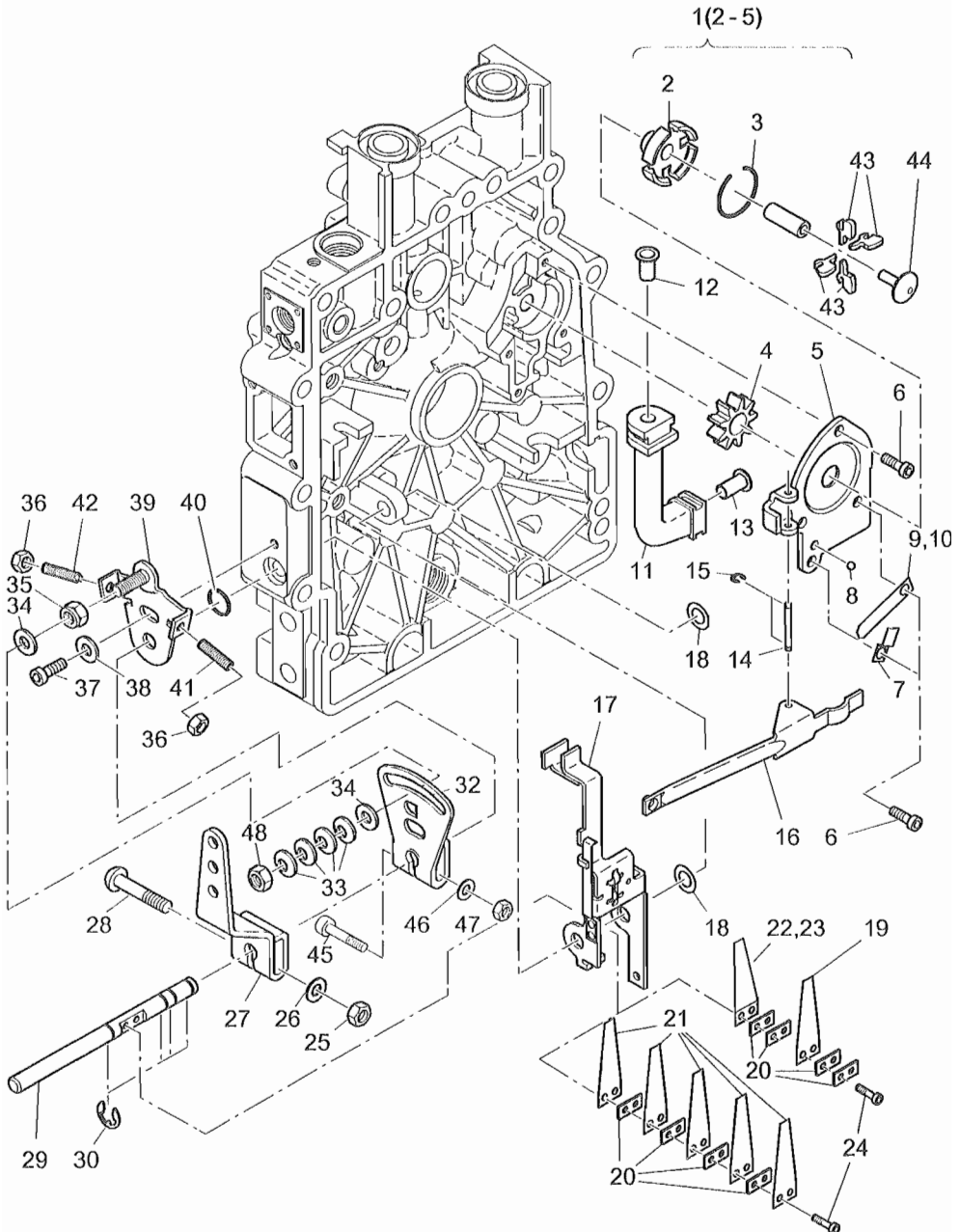


Fig.-No.	HATZ Ident-No.	Stück Qty.	P / W d / D	Bemerkungen Notes
		1B20	1B30	
36	501 444 00	2	2	M 6 DIN 934 - 8 A3C
37	504 168 00	1	1	M 6 x 16 DIN 912 - 8.8 A3C Tuf
38	501 445 00	1	1	6,4 DIN 125 - St A3C
39	013 164 00	1	1	
40	400 224 01	1	1	8 x 2 FPM 75 MOLYKOT.
41	501 381 00	0...1	0...1	M 6 x 35 DIN 915-45H ..1500 min ⁻¹
41	500 042 00	0...1	0...1	M 6 x 20 DIN 915-45H >1500 min ⁻¹
42	504 222 00	1	1	
43	050 796 01	8	8	
44	050 785 00	1	1	
45	504 271 00	1	1	M 5 x 25 DIN 912 - 8.8 A3C
46	502 163 00	1	1	5,3 DIN 125 - St A3C
47	500 943 00	1	1	M 5 DIN 934 - 8 A3C
48	504 560 00	1	1	M 6 SSN 003

Steuerdeckel
 Timing cover
 Couverture distribution
 Tapa de mando
 Coperchio distribuzione

Tafel Nr.
 Tabl. No.
 Tavola N.

M 11

09

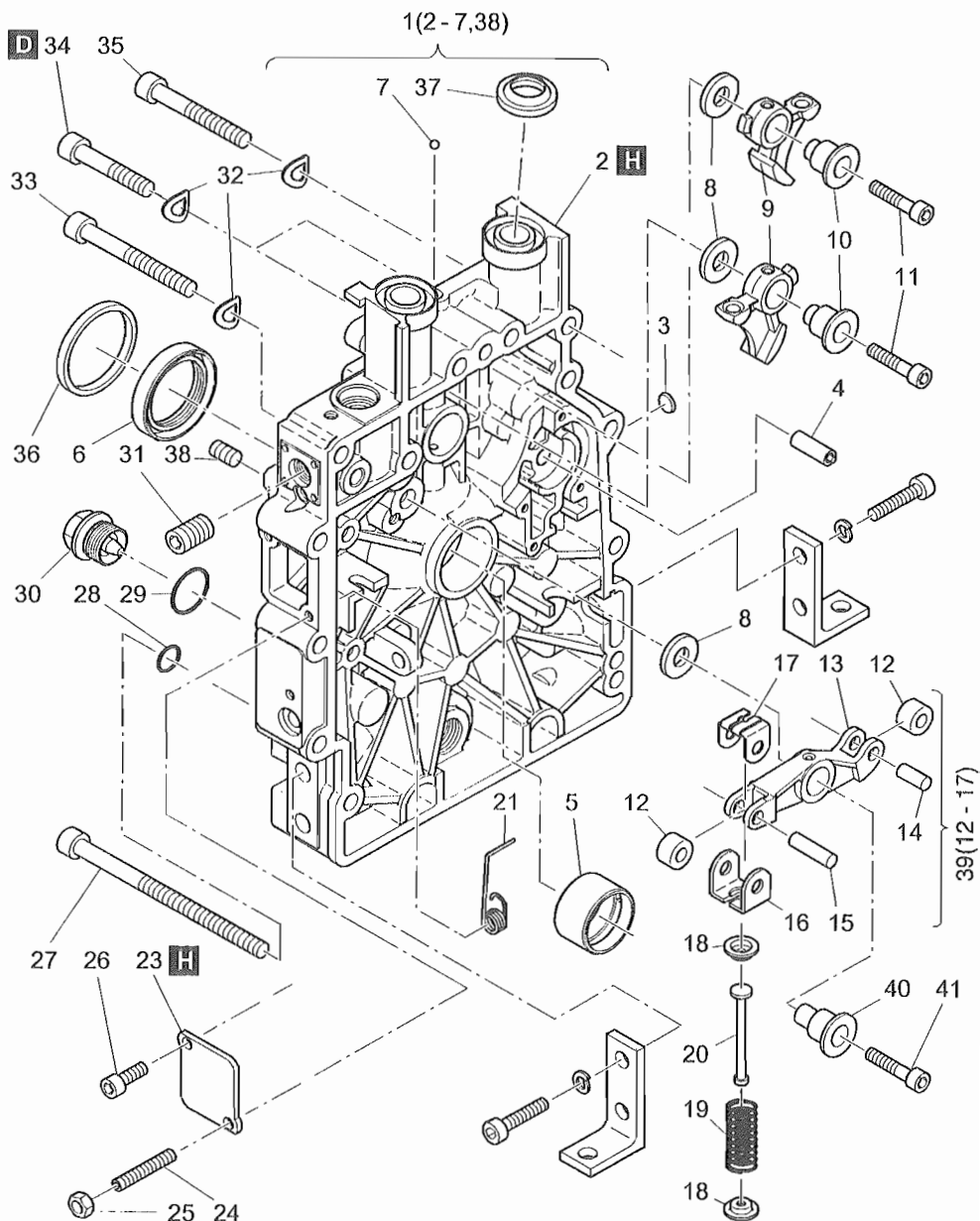


Fig.-No.	HATZ Ident-No.	Stück Qty.		P / W d / D	Bemerkungen Notes
		1B20	1B30		
1	013 195 01	1	1		
2	-----	-	-		
3	503 255 00	1	1		10 DIN 443 - St A3C
4	015 339 00	1	1		
5	050 531 00	1	1		
5	041 248 00	1	1		-0,5 mm
6	400 337 00	1	1	D1	30 x 47 x 8
7	504 434 00	1	1		5,5 G20 DIN 5401
8	037 941 00	3	3		
9	050 534 00	2	2		
10	037 942 01	2	2		
11	504 579 00	2	2		M 6 x 25 DIN 912 - 10.9
12	-----	-	-		
13	-----	-	-		
14	-----	-	-		Pos. 39 (12-17)
15	-----	-	-		
16	-----	-	-		
17	-----	-	-		
18	040 948 00	2	2		
19	040 958 00	1	2		
20	040 947 00	1	1		
21	050 952 00	1	1		
22	-----	-	-		
23	040 952 01	1	1		
24	504 489 00	1	1		M 6 x 30 DIN 913 45 H A3C Tuf.
25	501 444 00	1	1		M 6 DIN 934 - 8 A3C
26	503 842 00	1	1		M 6 x 12 DIN 912 - 8 A3C Tuf.
27	504 261 00	2	-		M 8 x 120 DIN 912 - 8.8 A3C
27	504 630 00	-	2		M 8 x 130 DIN 912 - 8.8 A3C
28	501 629 00	2	2	D2	A 8 x 14 DIN 7603 - Cu
29	504 591 00	1	1	W4, D2	A 22 x 27 DIN 7603 - Al
30	503 731 00	1	1	W1	AM 22 x 1,5 MAGN.
31	504 404 00	1	1		M 12 x 1,5 x 16 DIN 913 - A3C Tuf.

Steuerdeckel
Timing cover
Couvercle distribution
Tapa de mando
Coperchio distribuzione

Tafel Nr.
Tabl. No.
Tavola N.

M 11

09

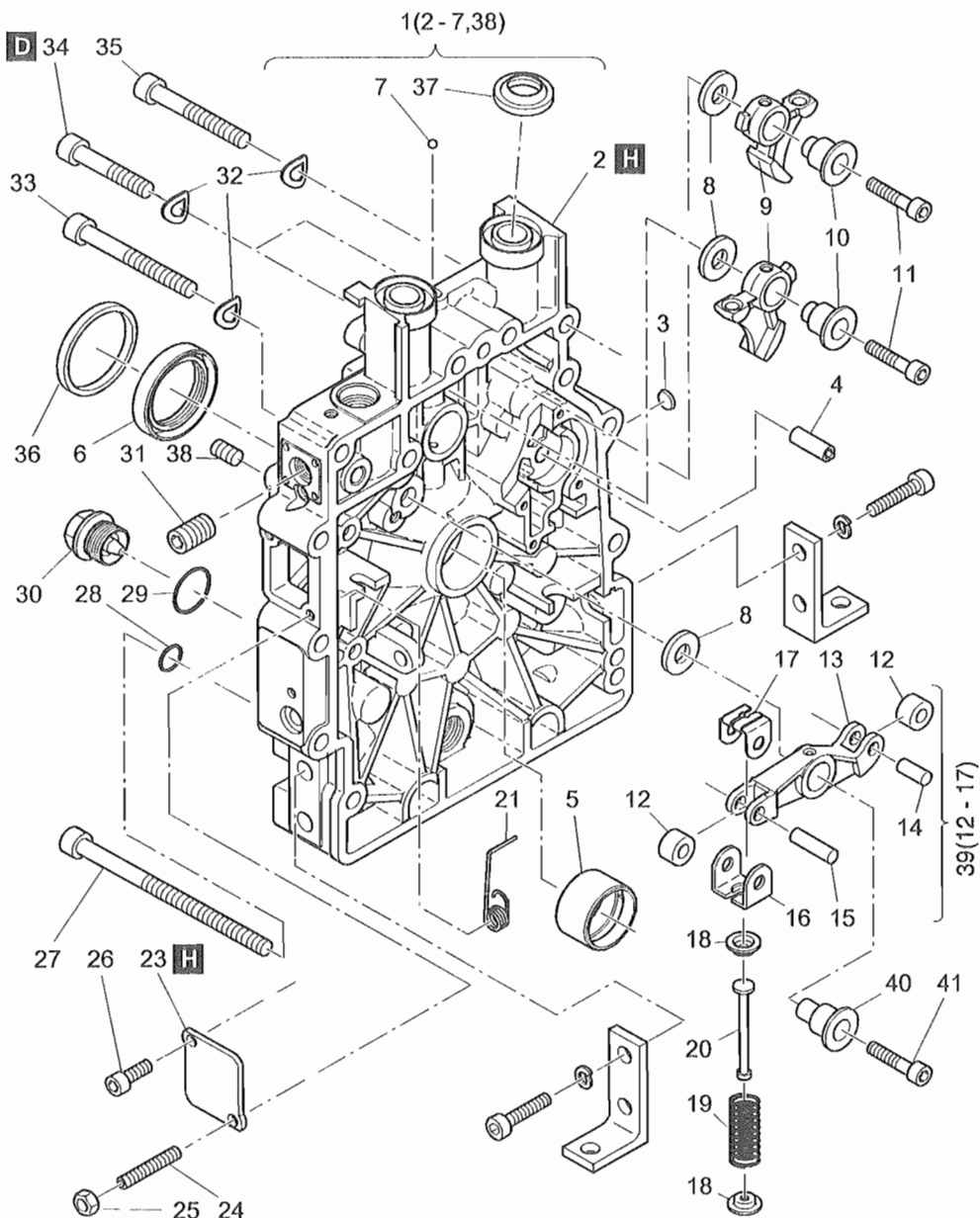


Fig.-No.	HATZ Ident-No.	Stück Qty.	P / W d / D	Bemerkungen Notes
		1B20	1B30	
32	500 951 00	13	13	A 8 DIN 137 A3C
33	502 488 00	1	1	M 8 x 60 DIN 912 - 8.8 A3C
34	504 534 00	2	2	M 8 x 45 DIN 912 - 8.8 A3C Tuf.
35	503 929 00	10	10	M 8 x 50 DIN 912 - 8.8 A3C
36	040 978 00	1	1	SAE A (Zentrierring)
37	041 065 00	2	2	d2
38	503 580 00	5	5	M 8 x 10 DIN 913 - A3C Tuf.
39	013 196 01	1	1	
40	040 968 10	1	1	
41	500 510 00	1	1	M 6 x 30 DIN 912 - 8.8

M 13

Gebälse
Blower
Soufflerie
Ventilador
Ventilatore

M 17

Schwungrad
Flywheel
Volant
Volante
Volano

Tafel Nr.
Tabl. No.
Tavola N.

10

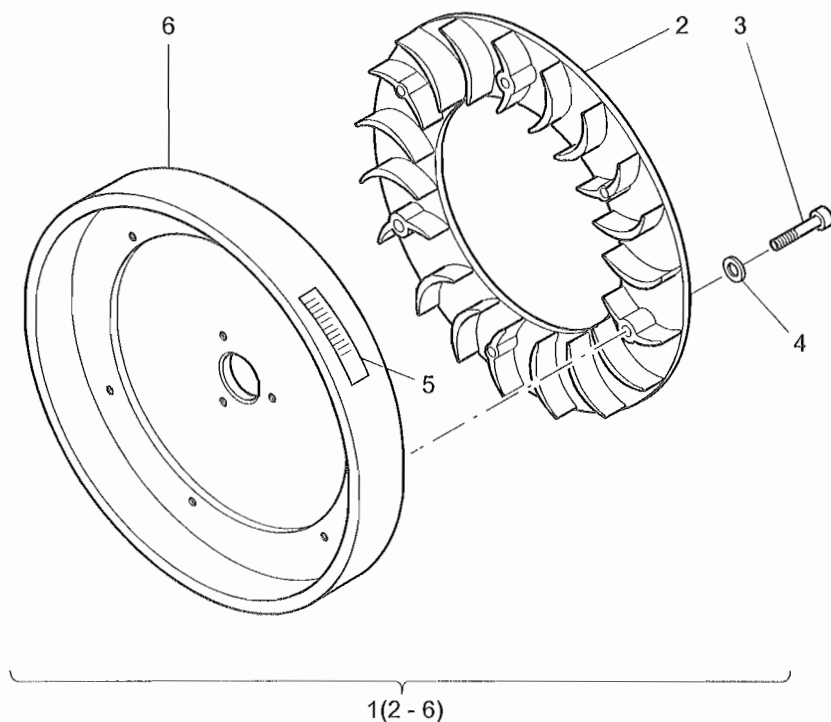


Fig.-No.	HATZ Ident-No.	Stück Qty.	P / W d / D	Bemerkungen Notes
		1B20	1B30	
1	015 797 00	1	-	
2	013 213 10	1	-	
2	013 304 00	-	1	
3	503 273 00	6	6	M 4 x 20 DIN 912 - 8.8 A3C
4	500 034 00	6	6	A 4 DIN 137
5	041 173 00	1	1	„Handstart“ OT
6	041 103 02	-	1	

M 14

Einspritzausrstung
Injection equipment
Equipement d'injection
Equipo de inyeccin
Equipaggiamento iniezione

Tafel Nr.
Tabl. No.
Tavola N.

11

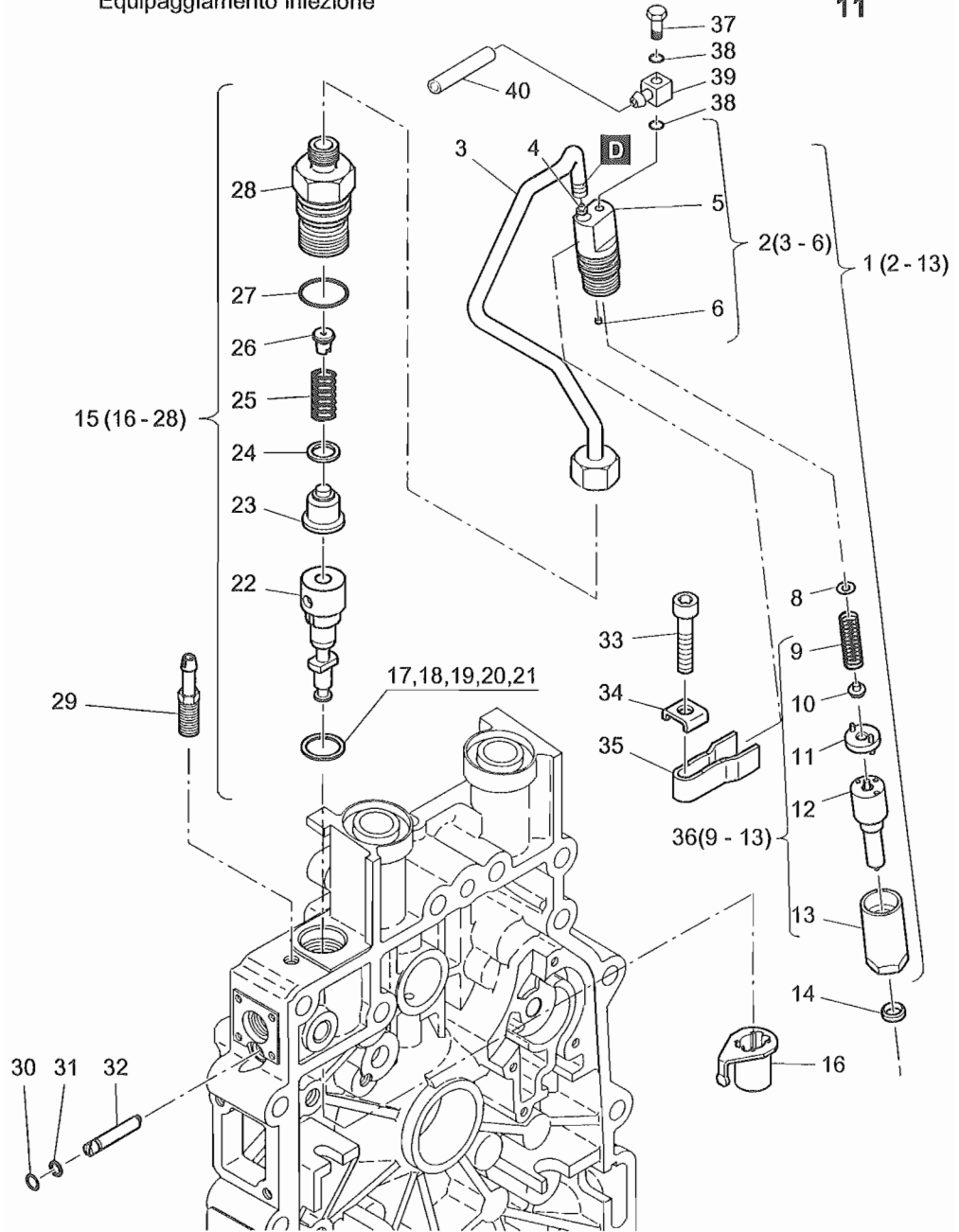


Fig.-No.	HATZ Ident-No.	Stück Qty.	P / W d / D	Bemerkungen Notes
		1B20	1B30	
1	013 220 10	1	-	
1	013 288 00	-	1	
2	015 771 10	1	-	
2	015 828 00	-	1	
3	-----	-	-	
4	050 961 01	0...1	0...1	4,9 mm
4	050 706 01	0...1	0...1	5,3 mm
5	-----	-	-	} s. 951 258 01
6	050 815 00	1	1	
7	-----	-	-	
8	504 364 00	0...1	0...1	1,00 mm
8	504 365 00	0...1	0...1	1,04 mm
8	504 366 00	0...1	0...1	1,10 mm
8	504 367 00	0...1	0...1	1,14 mm
8	504 368 00	0...1	0...1	1,20 mm
8	504 369 00	0...1	0...1	1,24 mm
8	504 370 00	0...1	0...1	1,30 mm
8	504 371 00	0...1	0...1	1,34 mm
8	504 372 00	0...1	0...1	1,40 mm
8	504 373 00	0...1	0...1	1,44 mm
8	504 374 00	0...1	0...1	1,50 mm
8	504 375 00	0...1	0...1	1,54 mm
8	504 376 00	0...1	0...1	1,60 mm
8	504 377 00	0...1	0...1	1,64 mm
8	504 378 00	0...1	0...1	1,70 mm
8	504 379 00	0...1	0...1	1,74 mm
8	504 380 00	0...1	0...1	1,80 mm
8	504 381 00	0...1	0...1	1,84 mm
8	504 382 00	0...1	0...1	1,90 mm
8	504 383 00	0...1	0...1	1,94 mm
9	-----	-	-	
10	-----	-	-	
11	-----	-	-	
12	504 422 00	1	-	P1
12	504 422 00	-	1	P1
13	-----	-	-	
14	050 705 00	1	1	d1

M 14

11

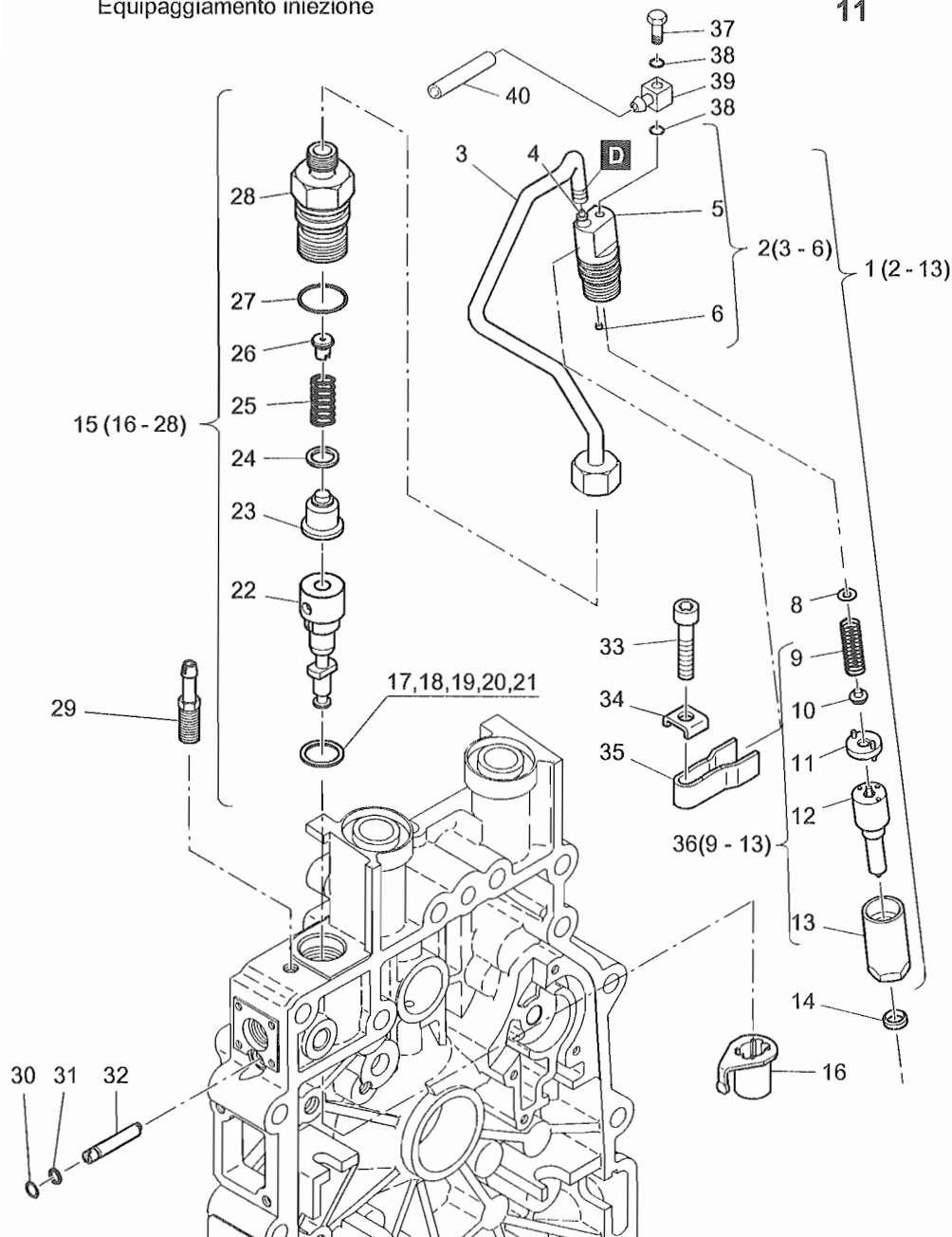


Fig.-No.	HATZ Ident-No.	Stück Qty.	P / W d / D	Bemerkungen Notes
		1B20	1B30	
15	013 222 00	1	-	
15	015 829 00	-	1	
16	013 308 00	1	1	
17	040 963 00	0...1	0...1	0,2 mm
18	040 964 00	0...1	0...1	0,3 mm
19	040 965 00	0...1	0...1	0,4 mm
20	040 966 00	0...1	0...1	0,5 mm
21	040 967 00	0...1	0...1	0,6 mm
22	-----	-	-	
23	-----	-	-	
24	490 044 00	1	1	9,5 x 13 x 0,5
25	-----	-	-	
26	-----	-	-	
27	490 551 00	1	1	17 x 2
28	504 459 00	1	1	
29	050 842 01	1	1	
30	490 092 00	1	1	
31	490 091 00	1	1	
32	040 977 00	1	1	
33	503 239 00	1	1	M 6 x 30 DIN 912 - 8.8 A3C
34	050 893 00	1	1	6,4
35	050 567 00	1	1	
36	013 261 00	1	-	
36	013 289 00	-	1	
37	504 645 00	1	1	AM 4 x 16 DIN 7315 St. Zn
38	501 108 00	2	2	A4 x 8 DIN 7603-Cu
39	051 290 00	1	1	
40	051 302 00	1	-	2,5 x 290
40	051 303 00	-	1	2,5 x 300

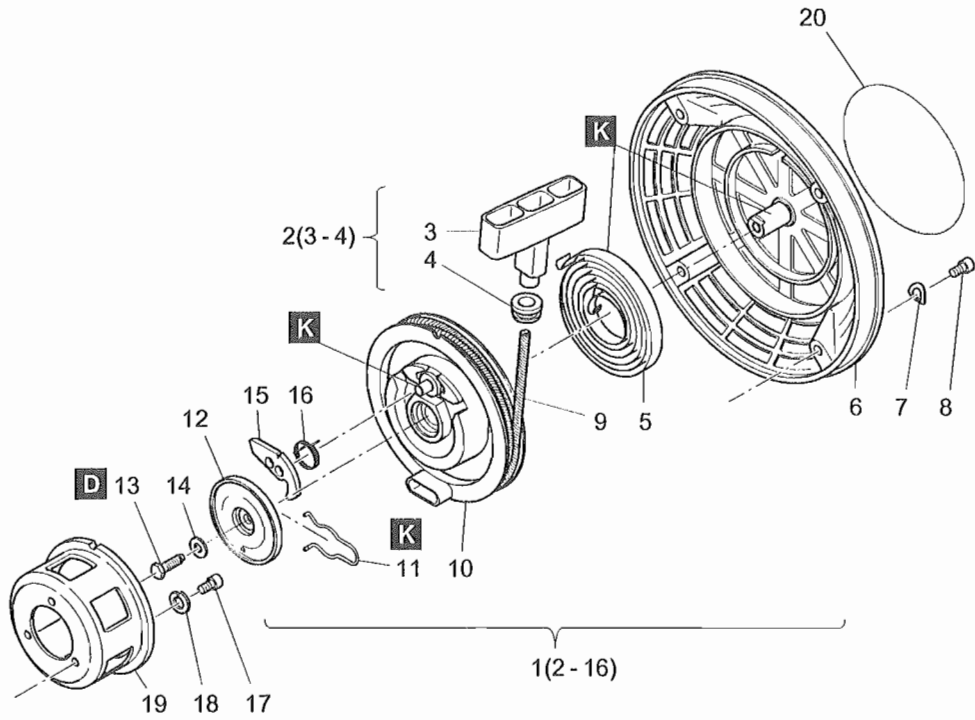


Fig.-No.	HATZ Ident-No.	Stück Qty.	P / W d / D	Bemerkungen Notes
		1B20	1B30	
1	015 150 00	1	1	
2	014 978 00	1	1	
3	-----	-	-	
4	036 652 00	1	1	
5	050 452 00	1	1	
6	015 693 00	1	1	
7	500 812 00	4	4	A6 DIN137
8	500 627 00	4	4	M 6 x 10 DIN 912 - 8.8
9	050 889 01	1	1	
10	015 005 00	1	1	
11	050 449 00	1	1	
12	050 450 01	1	1	
13	501 463 00	1	1	M 6 x 18 DIN 933 - 8.8 A3C
14	501 656 00	1	1	6,5 x 14 DIN 6904 - A3C
15	050 448 00	1	1	
16	050 613 00	1	1	
17	500 627 00	3	3	M 6 x 10 DIN 912 - 8.8
18	501 709 00	3	3	6 DIN 128 - A3C
19	504 458 00	1	1	
20	051 091 00	1	1	

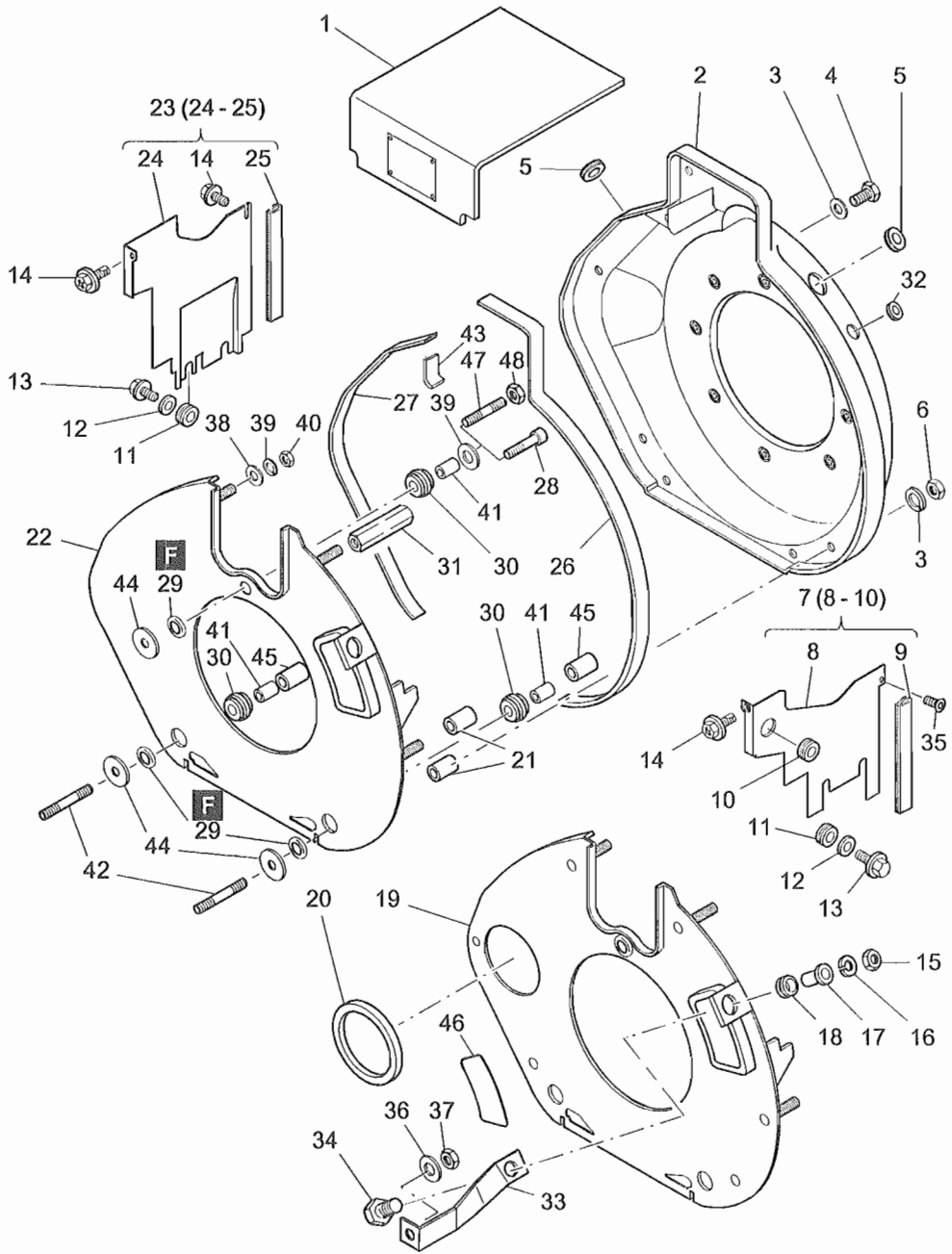


Fig.-No.	HATZ Ident-No.	Stück Qty.		P / W d / D	Bemerkungen Notes
		1B20	1B30		
1	015 335 03	1	-		
1	015 514 00	-	1		
2	013 168 00	1	-		
2	015 513 00	-	1		
3	501 709 00	7	7	6	DIN 128 - A3C
4	501 463 00	1	1	M 6 x 18	DIN 933 - 8.8 A3C
5	504 617 00	2	-		
6	501 444 00	6	6	M 6	DIN 934 - 8 A3C
7	013 166 00	1	-		
7	013 263 00	-	1		
8	-----	-	-		
9	040 976 00	1	-		107 mm
9	051 289 00	-	1		80 mm
10	503 348 00	1	1		
11	501 638 01	4	3		
12	504 416 00	3	3	4,3	DIN 9021 - A3C 140HV
13	504 454 00	3	3	M 4 x 10 St 8.8 A3A	DIN 7500
14	503 356 00	3	3	M 6 x 16 KZ1 8.8	A3D
15	501 444 00	1	1	M 6	DIN 934 - 8 A3C
16	501 709 00	1	1	6	DIN 128 - A3C
17	041 033 00	1	1		
18	503 928 00	1	1		
19	013 167 00	1	-		E-Start
19	013 268 00	-	1		E-Start
20	040 995 00	1	1		
21	041 242 00	5	-		7 x 12 x 18
21	040 984 00	-	4		7 x 12 x 16,3
22	013 174 00	1	-		
22	013 267 00	-	1		
23	013 165 00	1	-		
23	013 262 00	-	1		
24	-----	-	-		
25	040 976 00	1	-		107 mm
25	041 115 00	-	1		119 mm

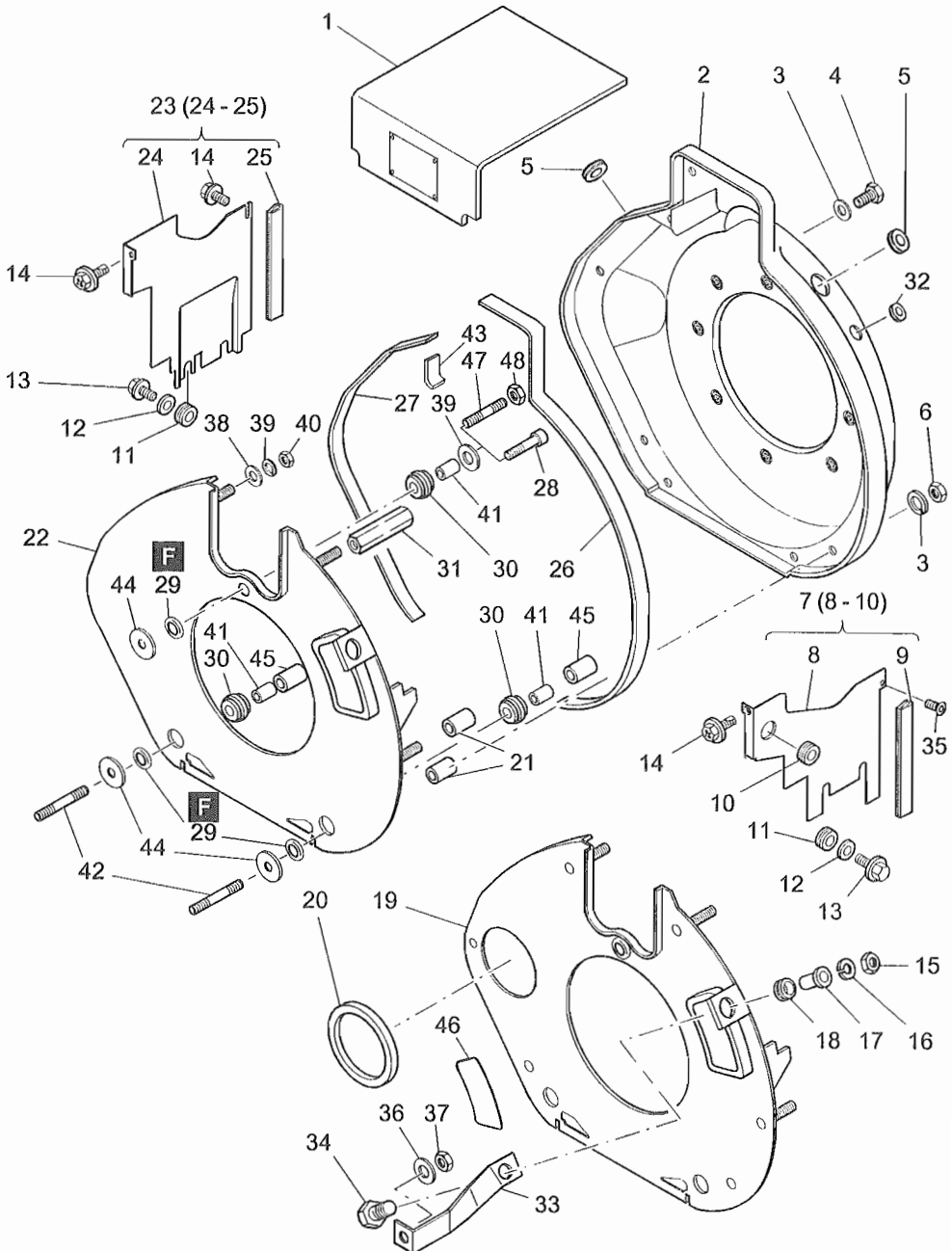


Fig.-No.	HATZ Ident-No.	Stück Qty.	P / W d / D	Bemerkungen Notes
		1B20	1B30	
26	041 245 00	1	-	470 mm
26	051 081 00	-	1	495 mm
27	041 246 00	1	-	388 mm
28	501 708 00	1	-	M 6 x 25 DIN 912 - 8.8 A3C
29	035 755 00	3	3	
30	009 214 00	3	3	
31	050 817 00	1	1	
32	504 533 00	1	1	
33	041 081 00	1	-	
33	041 168 00	-	1	
34	502 079 00	1	1	M 6 x 20 DIN 933 - 8.8 A3C
35	503 280 00	1	1	AM 6 x 16 17065 - 8.8
36	500 951 00	1	1	A 8 DIN 137 A3C
37	503 447 00	1	1	M 8 DIN 936 - 5 A3C
38	501 445 00	2	2	6,4 DIN 125 - St A3C
39	501 709 00	2...3	2...3	6 DIN128 A3C
40	501 444 00	1...2	1...2	M 6 DIN 934 - 8 A3C
41	041 191 00	3	3	6 x 8 x 14
42	504 581 00	2	2	M 6 x 45 DIN 835 - 8.8 A3C
43	050 073 00	1	1	48 mm
44	040 420 00	3	-	6,5 x 22,5 x 1
45	041 192 00	2	2	6,5 x 13 x 15
46	041 138 00	1	-	
46	041 167 00	-	1	
47	504 644 00	-	1	M 6 x 25 DIN 939-8.8 A3C Tuf.
48	501 444 00	-	1	M 6 DIN 934-8 A3C

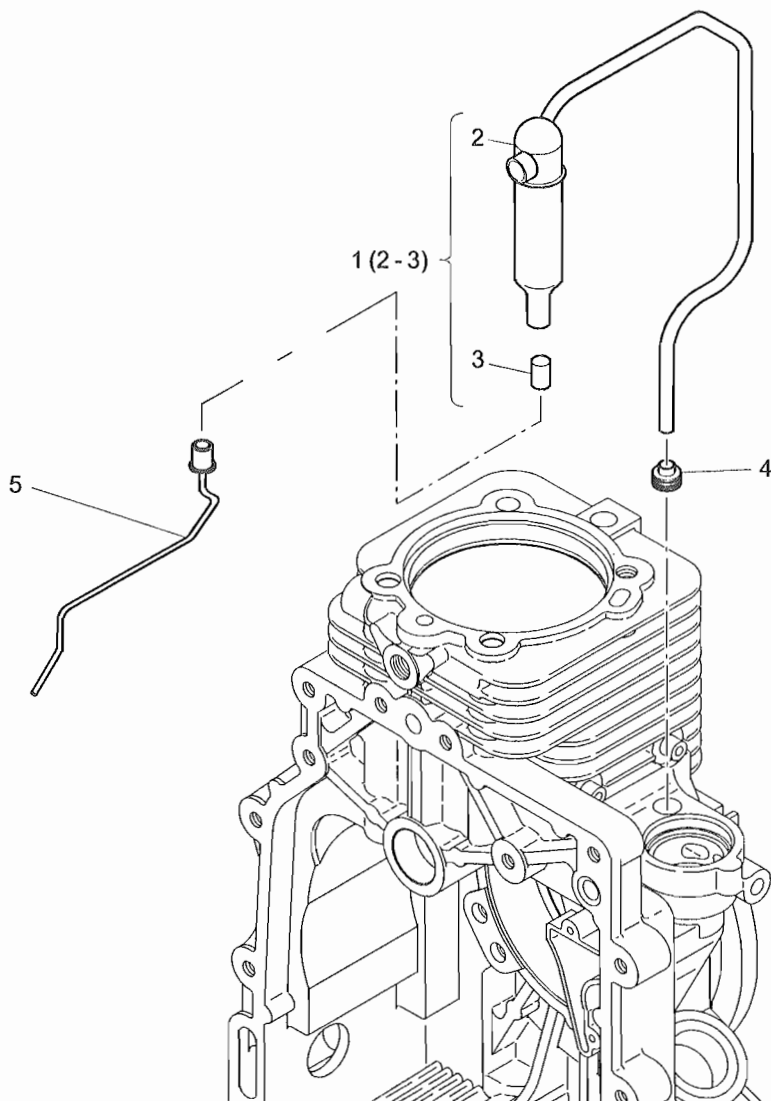


Fig.-No.	HATZ Ident-No.	Stück Qty.	P / W d / D	Bemerkungen Notes
		1B20	1B30	
1	015 564 00	1	1	
2	-----	-	-	
3	051 029 00	1	1	
4	504 503 00	1	1	D1
5	015 516 00	1	1	

Kraftstoffbehälter
 Fuel tank
 Reservoir à carburant
 Depósito combustible
 Serbatoio

Tafel Nr.
 Tabl. No.
 Tavola N.

A 01

15

1(2 - 9,11, 12, 18 - 20, 26 - 30, 55)

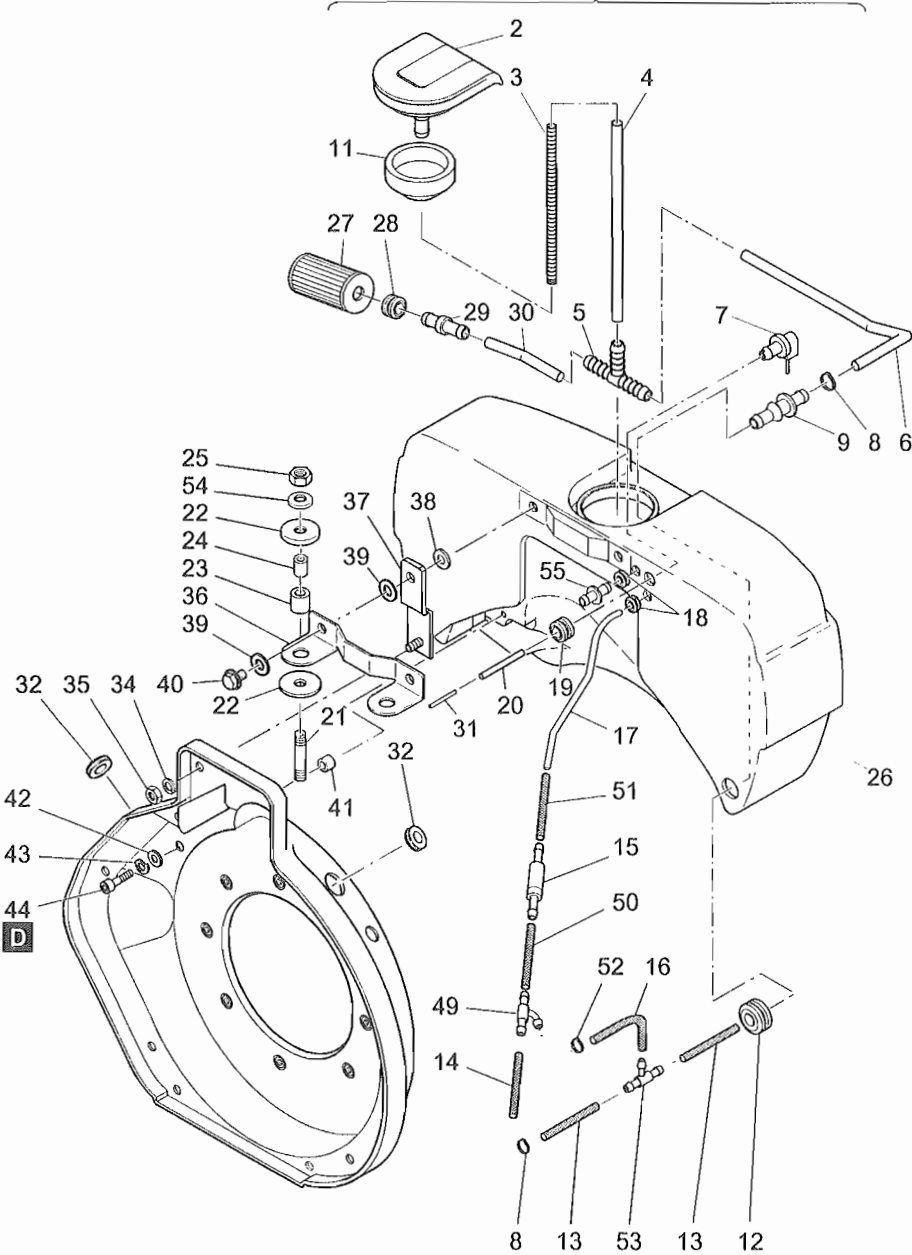


Fig.-No.	HATZ Ident-No.	Stück Qty.		P / W d / D	Bemerkungen Notes
		1B20	1B30		
1	015 788 10	1	-		
2	015 353 00	1	1		
3	050 846 00	1	1		
4	050 851 00	1	1		7 x 165
5	504 406 00	1	1		
6	050 849 00	1	-		7 x 190
6	051 311 00	-	1		7 x 220
7	015 349 00	1	1		
8	504 411 00	1	2	P2	11,8-505 R
9	050 840 00	1	1		
10	-----	-	-		
11	050 864 01	1	1		
12	504 408 00	1	1		
13	051 231 00	1	1	P1	7 x 70
14	050 853 00	1	1	P1	3,5 x 45
15	015 346 00	1	1	P1	
16	036 733 00	1	1	P1	4,5 x 170
17	051 222 00	1	1		
18	051 304 00	2	2		
19	504 409 00	1	1		
20	050 856 00	1	1		1 x 3 x 80
21	502 319 00	2	2		M 8 x 25 DIN 935 - 8.8 A3C
22	051 098 10	4	4		8,2 x 22 x 2
23	050 868 10	2	2		
24	051 228 00	2	2		
25	400 284 00	2	2		VM 8 DIN 980 - 8 C3A
26	-----	-	-		
27	504 405 00	1	1	W2	
28	504 409 00	1	1		
29	050 844 00	1	1		
30	050 850 00	1	-		7 x 70
30	051 310 00	-	1		7 x 80
31	050 855 00	1	1		1,4 x 2 x 16
32	051 077 00	2	-		
33	-----	-	-		
34	501 709 00	2	2		6 DIN 128 A3C
35	501 444 00	2	2		M 6 DIN 934 - 8 A3C

Kraftstoffbehälter
Fuel tank
Reservoir à carburant
Depósito combustible
Serbatoio

Tafel Nr.
Tabl. No.
Tavola N.

15

1(2 - 9,11, 12, 18 - 20, 26 - 30, 55)

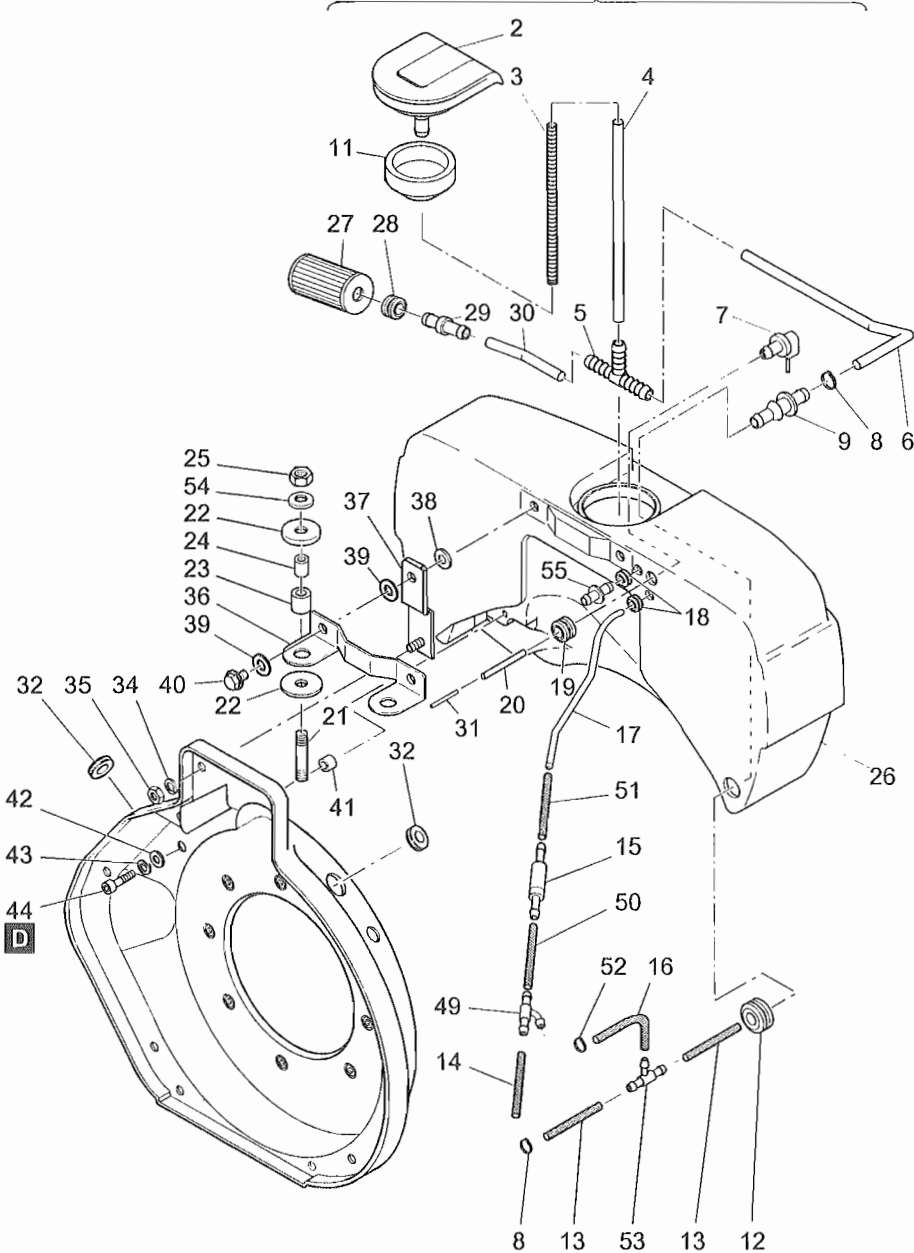


Fig.-No.	HATZ Ident-No.	Stück Qty.	P / W d / D	Bemerkungen Notes
		1B20	1B30	
36	051 085 11	1	-	
36	051 223 00	-	1	
37	013 313 00	2	2	
38	501 200 00	2	2	A 6,4 DIN 9021 St A3C
39	051 100 10	4	4	7,1 x 17,9 x 2
40	015 570 00	2	2	6 x 18
41	041 188 00	2	4	6,5 x 13 x 4,8
42	501 445 00	2	4	6,4 DIN 125 St A3C
43	501 709 00	2	4	6 DIN 128 A3C
44	501 707 00	2	4	M 6 x 16 DIN 912 - 8.8 A3C
45	-----	-	-	
46	-----	-	-	
47	-----	-	-	
48	-----	-	-	
49	051 227 00	1	1	
50	051 232 00	1	1	3,5 x 38
51	036 643 00	1	-	4,5 x 75
51	040 604 00	-	1	4,5 x 100
52	503 998 01	1	1	11,3
53	504 596 00	1	1	
54	501 481 00	2	2	8,4 DIN 125 St A3C
55	051 296 00	1	1	

Luffilter
Air filter
Filtre à air
Filtro de aire
Filtro aria

A 02

Tabl. Nr.
Tabl. No.
Tavola N.

16

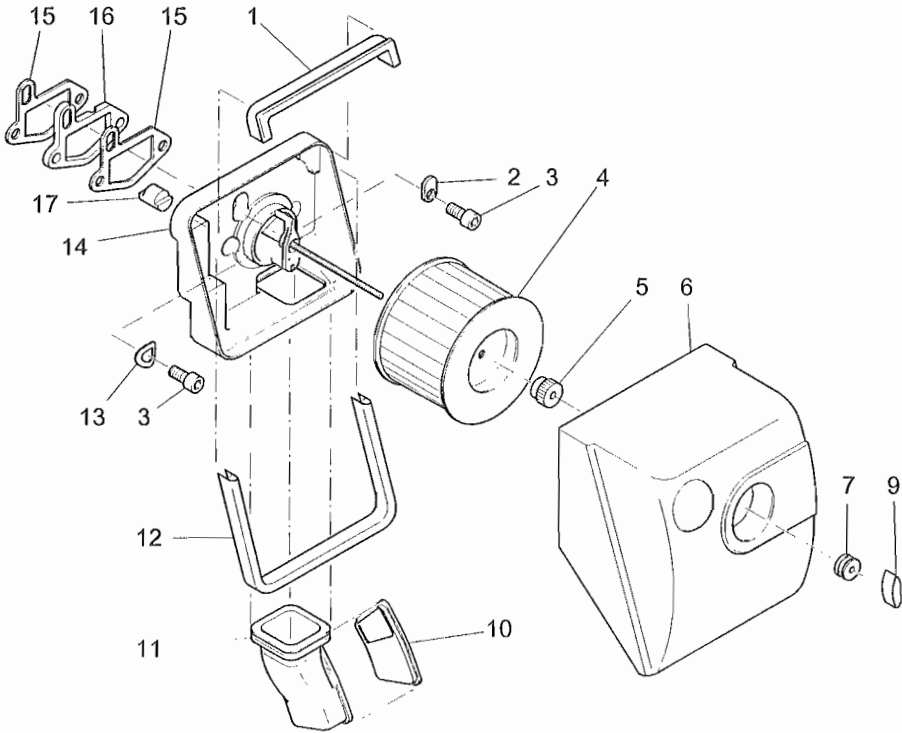


Fig.-No.	HATZ Ident-No.	Stück Qty.	P / W d / D	Bemerkungen Notes
		1B20	1B30	
1	050 829 00	1	-	
1	051 076 00	-	1	
2	050 564 00	1	1	
3	501 715 00	3	3	M8 x 25 DIN 912 - 8.8 A3C
4	504 260 00	1	1	W2
5	504 543 00	1	1	
6	050 549 00	1	-	
6	051 075 00	-	1	
7	504 358 00	1	1	
8	-----	-	-	
9	504 522 00	1	1	
10	041 042 00	1	-	
10	041 166 00	-	1	
11	041 030 00	1	-	
11	041 165 00	-	1	
12	050 561 00	1	1	365 mm
13	500 951 00	2	2	
14	015 151 00	1	1	
15	050 563 00	2	2	d2
16	050 883 00	1	1	
17	050 981 00	1	1	

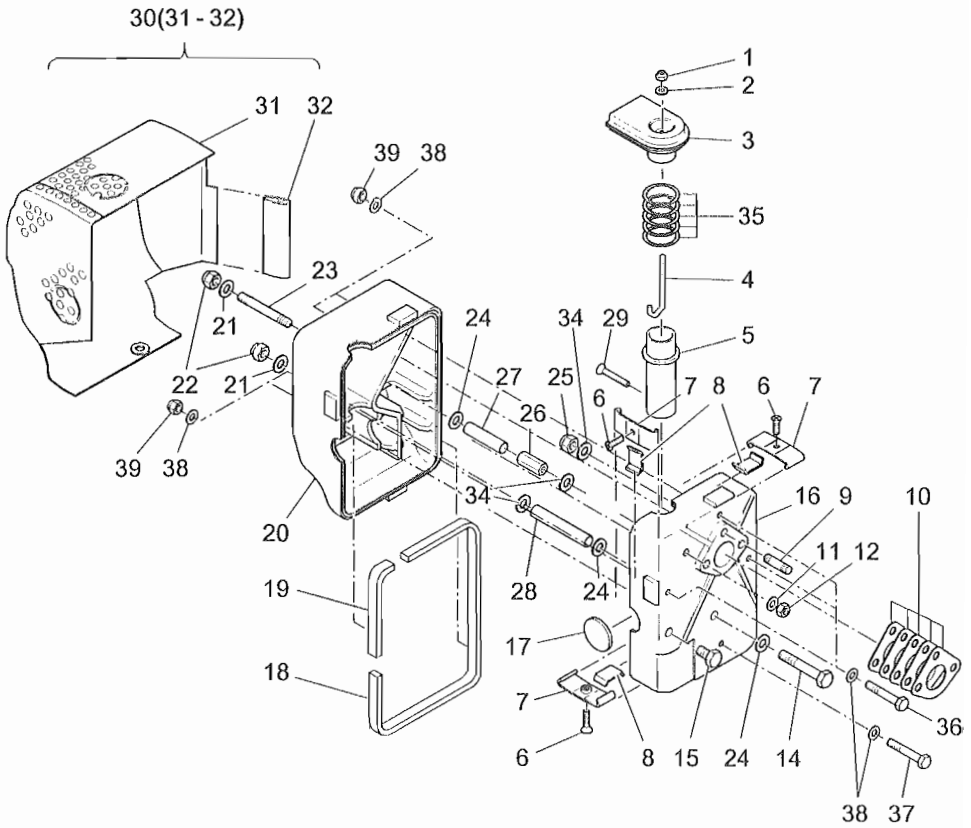


Fig.-No.	HATZ Ident-No.	Stück Qty.	P / W d / D	Bemerkungen Notes
		1B20	1B30	
1	400 282 00	1	1	M5 SSN 440 - 8 - Cu
2	502 163 00	1	1	5,3 DIN 125 - St A3C
3	015 313 01	1	-	
3	015 313 10	-	1	
4	050 811 00	1	1	
5	050 814 00	1	-	
5	050 814 10	-	1	
6	504 225 00	3	3	M6 x 12 DIN 7991 - 8.8
7	015 312 00	3	3	
8	050 816 10	3	3	
9	501 281 00	3	3	M 8 x 30 DIN 835 - 10.9 A3C
10	050 801 00	5	-	d5
10	051 036 00	-	5	d5
11	501 445 00	1	1	6,4 DIN 125 - St A3C
12	400 283 00	1	1	M 6 SSN 440-8 C4P
13	-----	-	-	
14	500 289 00	1	1	M 8 x 100 DIN 931 - 8.8 A3C
15	504 505 00	1	1	M 8 x 12 DIN 7500 - D A3A
16	050 777 11	1	-	
16	051 034 01	-	1	
17	050 810 02	1	1	
18	050 813 01	1	-	
18	051 041 00	-	1	
19	050 812 01	1	-	
19	051 040 00	-	1	
20	050 778 03	1	-	
20	051 035 00	-	1	
21	501 230 00	3	3	8,4 DIN 7349
22	400 284 00	3	3	VM 8 DIN 980 - 8 C3A
23	504 452 01	1	1	M 8 x 70 DIN 939 - 8.8
24	501 481 00	6	6	8,4 DIN 125 - St A3C
25	400 284 00	1	1	VM 8 DIN 980 - 8 C3A
26	050 839 00	1	1	M 8

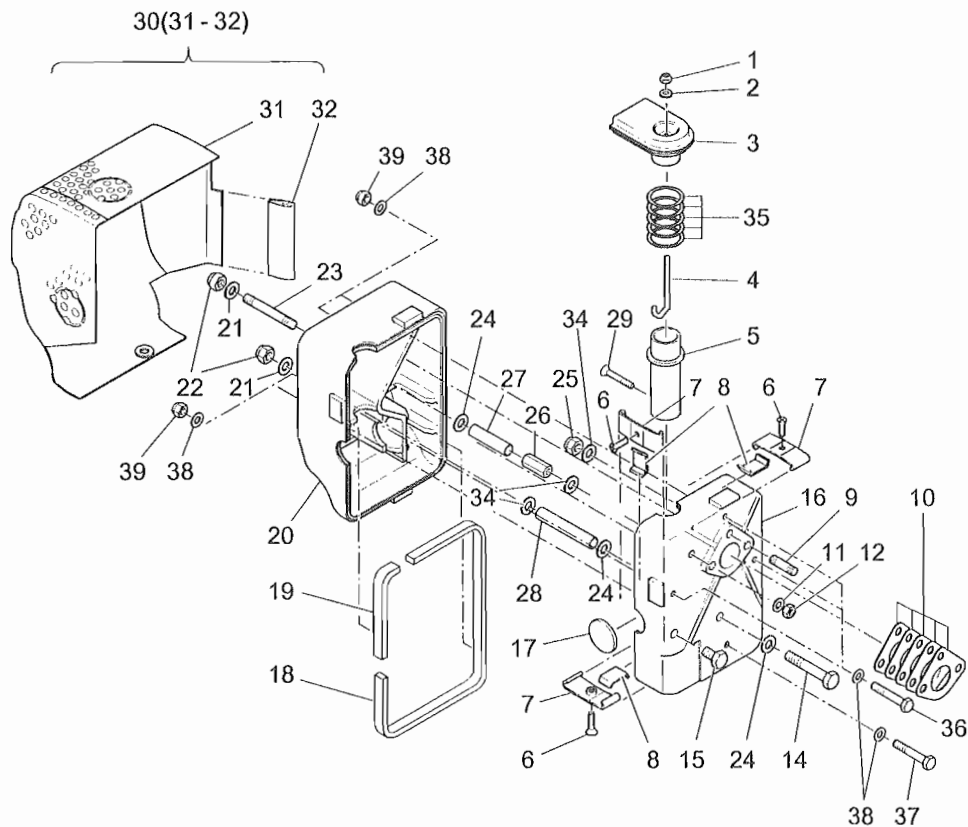


Fig.-No.	HATZ Ident-No.	Stück Qty.	P / W d / D	Bemerkungen Notes
		1B20	1B30	
27	050 837 00	1	-	55 mm
27	051 039 00	-	1	50,4 mm
28	050 838 10	1	-	60,8 mm
28	051 038 00	-	1	64,8 mm
29	504 450 00	1	1	M 6 x 35 DIN 7991 - 8.8
30	015 333 00	1	-	
30	015 754 00	-	1	
31	-----	-	-	
32	051 003 00	1	1	65 mm
33	-----	-	-	
34	501 230 00	3	3	8,4 DIN 7349
35	051 270 00	-	5	28,1 x 34 x 0,5
36	504 607 00	-	3	M 6 x 100 DIN 931-8.8 A3C
37	503 837 00	-	1	M 6 x 55 DIN 931-8.8 A3C
38	501 445 00	-	8	6,4 DIN 125-St A3C
39	400 283 00	-	4	M 6 SSN 440-8 C3P

A 05

Starter, Generator
Starter, alternator
Demarreur, alternateur
Arrancador, alternador
Motorino avviamento, alternatore

Tafel Nr.
Tabl. No.
Tavola N.

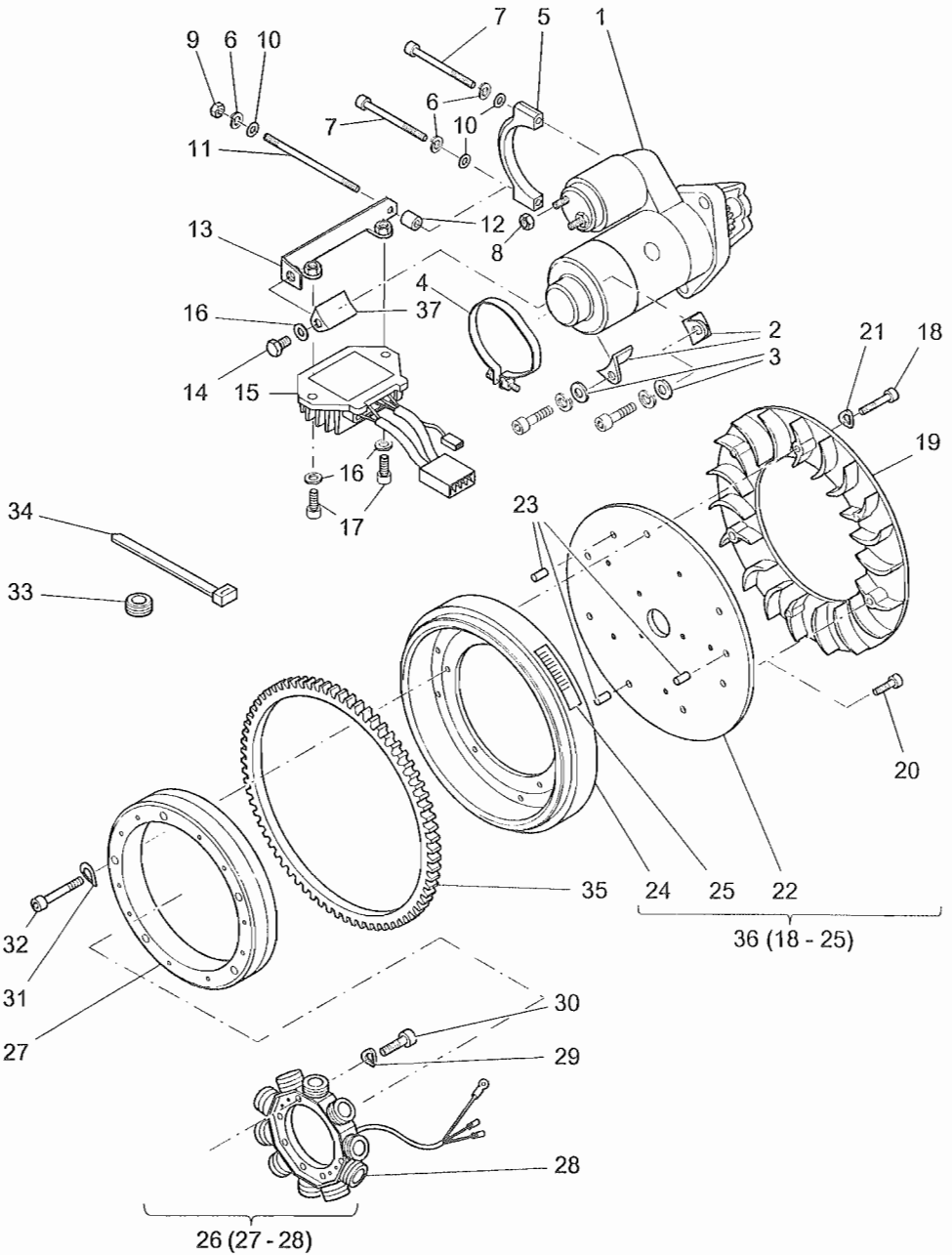
18

Fig.-No.	HATZ Ident-No.	Stück Qty.		P / W d / D	Bemerkungen Notes
		1B20	1B30		
1	504 262 01	1	1		12 V
2	040 981 00	2	-		
2	041 102 00	-	2		
3	501 481 00	2	2	8,4	DIN 125 - St A3C
4	041 156 00	1	1		
5	040 991 00	1	1		
6	501 709 00	2	2	6	DIN 128 - A3C
7	504 443 00	2	2	M 6 x 80	DIN 912 - 8.8 A3C
8	500 232 00	1	1	BM8	DIN 439 - 5 A3C
9	501 444 00	1	1	M 6	DIN 934 - 8 A3C
10	501 445 00	2	2	6,4	DIN 125 - St A3C
11	504 559 00	1	1	MFS 6 x 90	DIN 949 - 1 8.8 A3C
12	036 714 00	1	1		7 x 12 x 15
13	015 609 00	1	1		
14	500 962 00	1	1	M 8 x 12	DIN 933 - 8.8 A3C
15	051 007 00	1	1		12 V
16	501 481 00	3	3	8,4	DIN 125 - St A3C
17	501 654 00	2	2	M 8 x 16	DIN 912 - 8.8 A3C
18	503 273 00	6	6	M 4 x 20	DIN 912 - 8.8 A3C
19	013 213 10	1	-		
19	013 304 00	-	1		
20	504 168 00	3	3	M 6 x 16	DIN 912 - 8.8 A3C Tuf.
21	500 034 00	6	6	A4	DIN137 - St
22	040 987 20	-	1		
23	500 352 00	3	3	6 x 12	DIN 1481 55 Si 7
24	041 101 00	-	1		
25	041 172 00	1	-		„E-Start“ OT
25	041 174 00	-	1		„E-Start“ OT
26	504 359 01	1	1		12 V
27	-----	-	-		
28	-----	-	-		
29	500 819 00	4	4	A 5	DIN 137 A3C
30	504 271 00	4	4	M 5 x 25	DIN 912 - 8.8 A3C
31	500 812 00	5	5	A 6	DIN 137 A3C
32	504 487 00	5	5	M 6 x 30	DIN 6912 - 8.8 A3C
33	501 998 00	1	1		
34	503 584 00	3	3		
35	040 986 00	1	-		
35	041 080 00	-	1		
36	015 798 00	1	-		
37	040 981 00	1	1		

A 05
A 10

Armaturen, Leitungen
Electric equipment, wirings
Équipement électrique, cable
Equipo eléctrico, cables
Equipaggiamento elettrico, cablaggio

Tafel Nr.
Tabl. No.
Tavola N.

19

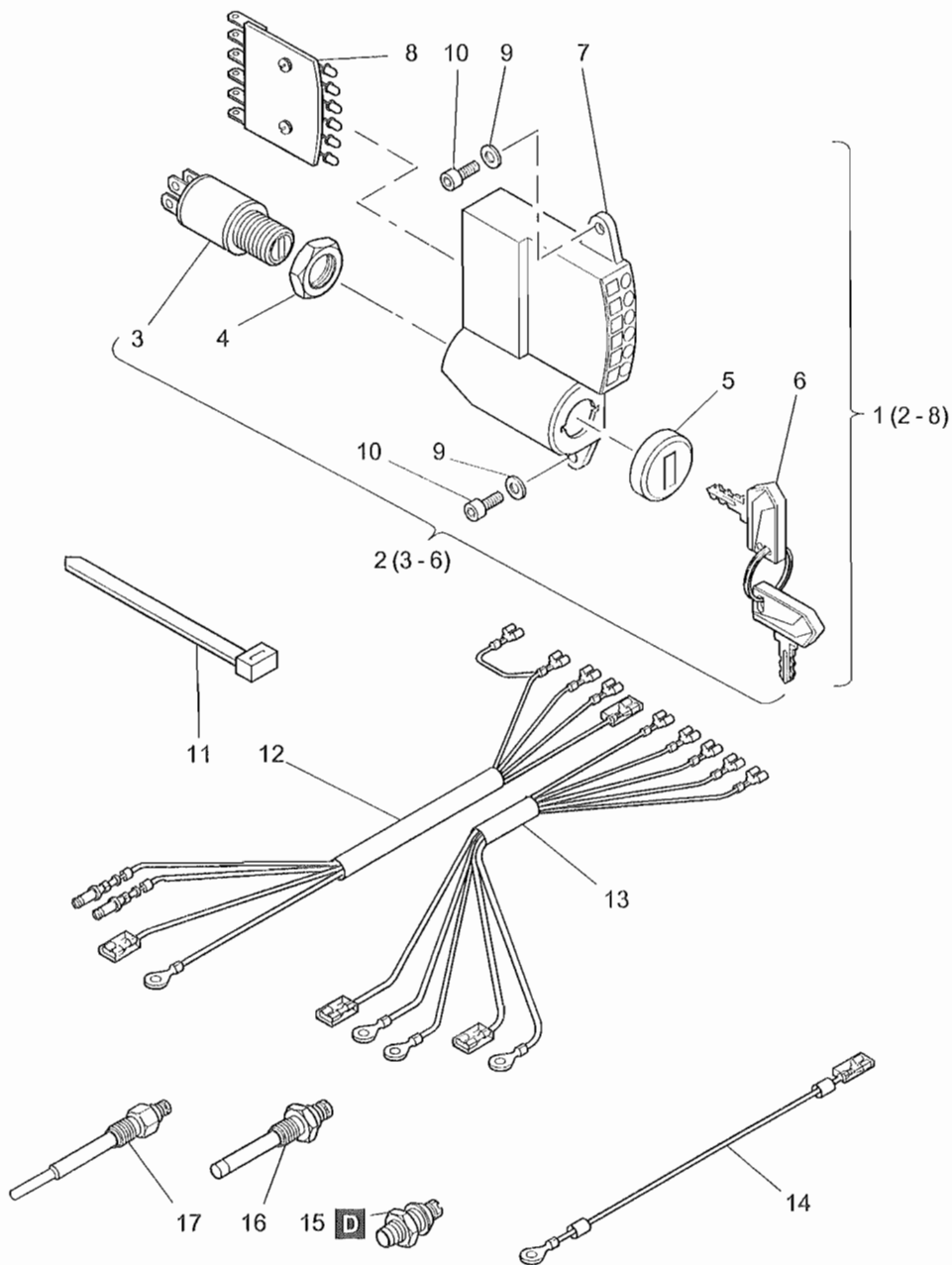


Fig.-No.	HATZ Ident-No.	Stück Qty.	P / W d / D	Bemerkungen Notes
		1B20	1B30	
1	015 608 00	1	1	
2	503 844 01	1	1	
3	-----	-	-	
4	-----	-	-	
5	-----	-	-	
6	504 049 00	1	4	
7	051 010 00	1	1	
8	050 921 00	1	1	
9	501 445 00	2	2	6,4 DIN 125 St A3C
10	501 491 00	2	2	M 6 x 12 DIN 912 - 8.8 A3C
11	503 584 00	2	2	
12	015 421 00	1	1	
13	-----	-	-	
14	015 468 00	1	1	
15	400 213 00	1	1	Oil
16	502 686 00	1	1	Temp.
17	504 492 00	1	1	12 V

