

MOTORENFABRIK
HATZ KG
RUHSTORF/ROTT

Telephone: (085 31) 322 - (3022)
Telex: 05 7260



SPARE PARTS LIST

for
HATZ-Diesel engines
aircooled

Engine types

ARCHIV

E 80 G

E 85 G

E 89 G

E 80 FG

E 85 FG

E 89 FG

Krönner 34. 200/9 engl. 9.75 - 5000

Printed in West-Germany

8399 Ruhstorf-Rott

Postfach 12/13

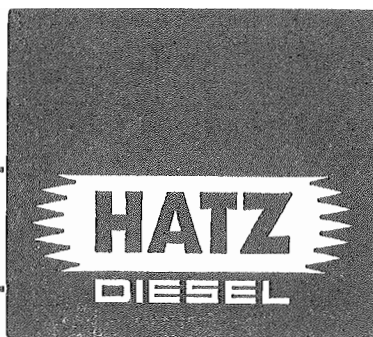
Railway station: Ruhstorf

Cables: Hatzmotor Ruhstorfadrott

Protection tax DM 2.-

**MOTORENFABRIK
HATZ KG
RUHSTORF/ROTT**

**Telephone: (085 31) 322 - (30 22)
Telex: 05 7260**



SPARE PARTS LIST

for

HATZ-Diesel engines

aircooled

Engine types

E 80 G

E 85 G

E 89 G

E 80 FG

E 85 FG

E 89 FG

**8399 Ruhstorf-Rott
Postfach 12/13**

**Railway station: Ruhstorf
Cables: Hatzmotor Ruhstorfadrott**

Protection tax DM 2.-

HATZ-Service

Europe



Belgien Belgium Belgique Belgio Belgica	Waremme * Import Moes S.P.R.L. Chaussée Romaine 4370 Waremme	(0 19) 324.96 Cables: Impormoes Waremme
Dänemark Denmark Danemark Danimarca Dinamarca	Taastrup * Dansk Wimex A/S. Kogevej 32 2630 Taastrup	(01) 99 60 66 Telegr.: Wimexdan
Großbritannien Great Britain Angleterre Inghilterra Inglaterra	Earl Shilton * Hatz Concessionaires Ltd. 49 Church Street, Earl Shilton-Leicester LE9 7EN	(04 55) 4 36 45 Telex: 341693
	Aberdeen Thomas W. Stewart & Co. Ltd. Craigshaw Road West Tullos Industrial Estate Aberdeen	25127
	Cardiff Plant Repairs & Services (South Wales) Ltd. Penarth Road Cardiff - South Wales	02 22 - 70 73 41 Telex: 497345
	Carlisle Rickerby Ltd. Currock Road Carlisle - Cumberland	Carlisle 2 75 21 Telex: 64181
	Chelmsford Chelmsford Plant Sales Ltd. Regina Road Chelmsford - Essex	6 85 79 54601

* = Vertretung, Representation, Représentation, Representación, Rappresentaza

Großbritannien
Great Britain
Angleterre
Inghilterra
Inglaterra

Edinburgh

Construction Tools Electric Co.
26, Ballantine Road
Leith

031 554 6675

Glasgow

Stewart Plant Sales Ltd.
Townmill Road
Glasgow G 31 3AR

0 41 — 5 54 — 68 81
Telex: 77278

Heywood

Frank K. Miles (Spares) Ltd.
Back Manchester Street
Heywood—Lancs.

07 06—60 128 / 9

Leeds

Robson (Power Tools) Ltd.
12, Wortley Moor Lane
Leeds

63 23 11

Lidd

Obart (B.M.) Ltd.
18, New Street
Lidd—Kent

Lidd 20 20 8

Lincoln

Dolan Plant Sales Ltd.
The Quarry
Waddington

Waddington 432
Telex: 56321

London

Lewis & Lewis Ltd.
School Road
North Acton
London NW 10

01 — 965 — 6757

Meriden

David Barton Ltd.
Walsh Lane
Meriden - Warwicks

0 67—62 — 354/399

Großbritannien Great Britain Angleterre Inghilterra Inglaterra	Nottingham Munro Plant Ltd. Lenton Works 400, Derby Road Nottingham	7 42 77
	Uttoxitea Trenchex Plant Sales Ltd. Dove Fields Uttoxitea, Staffs. ST 14 8ER	Uttoxitea 37 31 Telex: 36552
	Wimborne Lewis & Lewis (Southern) Ltd. Fern Down Industrial Estate Statehill Wimborne—Dorset	Fern Down 020—17—6171
Northern Ireland	Belfast Robert Craig & Sons (Engineering) Ltd. Great George's Street Belfast - Ireland	02 32 — 3 29 71 Telex: 74494
Eire	Dublin * Diesel Services Limited 20—24 Upper Sheriff Street Dublin — 1 / Rep. of Ireland	4 77 18 Telegramm: Dieserv
Finnland Finland Finlande Finnlandia Finlandia	Helsinki * Hanke Oy Levytie 4 SF 00810 Helsinki 81	Tel. 780 633 Telex: 12-1333 SF Cables: Hanke Sf. Helsinki
Frankreich France France Francia Francia	Aulnay-sous-Bois ** Société Hatz-France 9—13, rue Henri Becquerel Zone Industrielle 93 — Aulnay-sous-Bois	929.58.46 Telex: 60 007

* = Vertretung, Representation, Représentation, Representación, Rappresentaza

** = Niederlassung, Factory branch, Filiale, Establecimiento, Colónia

Griechenland	Thessaloniki	982 11/13/15
Greece	* Apostolidis & Co. AG	
Grece	Maschinenfabrik u. Gießerei	
Grecia	Industrial Area Sindos	
Grecia	Thessaloniki	
Island	Reykjavik	20680 (10 Lines)
Iceland	* Landssmidjan	Cables:
Islande	Purchasing Department	Landssmidjan
Island	Reykjavik	
Islandia		
Italien	Milano	470.101 – 470.134
Italy	Loro & Parisini	(15 Linee)
Italie	Via Savona 129	Magutt-Milano
Italia	I - 20144 Milano	Telex: 32 407
Italia		
Luxemburg	Esch-sur-Alzette	54.79.66
Lusemburg	Polyma S.A.	
Luxembourg	Coin rues Fr. Conven et	
Lussenburgo	H. Dunant	
Lusemburgo	Esch-sur-Alzette	
	(Grand Duché de Luxembourg)	
Malta	Gozo	Gozo 76568
Malta	Michael Galea	Cable Address
Malte	98, Racecourse Street	Pergolate
Malta	Xaghra, Gozo	
Malta		
Niederlande	Culemborg	(03450) 4147
Netherlands	** Hatz Nederland B.V.	Telex: 0044/47787
Pays-Bas	Postbus 55	
Olanda	Anthonie van Diemenstraat 38	
Paises Bajos	Culemborg	
Norwegen	Oslo	(02) 23 61 80
Norway	* Industriediesel A/S	Cables: Nortrade
Norvege	Kjelsasveien 174	
Norvegia	Korsvoll – Oslo 8	
Norvega		

* = Vertretung, Representation, Représentation, Representación, Rappresentaza

** = Niederlassung, Factory branch, Filiale, Establecimiento, Colonia

Österreich

Austria
 Autriche
 Austria
 Austria

Wien

Otto Eisenwagen
 A-1030 Wien VII
 Neubaugasse 56

Tel.: 93 56 87

Portugal

Portugal
 Portugal
 Portogallo
 Portugal

Porto

* Ed. Ferreirinha & Irmao, Lda.
 Motores e Maquinas EFI,
 S.A.R.L.
 Rua da Boa Nova 125/163
 Caixa postal 44,
 Porto

2 55 71/2

Cables: Edfir-Porto
 Telex: 22 322
 EDFIR P.

Schweden

Sweden
 Swede
 Svezia
 Sueca

Stockholm-Bandhagen

* T. Lindstam AB
 Harpsundsvägen 201
 Box 31
 124 21 Bandhagen 1

08/47 25 75

Telex: 005 411 164
 ü. Olsonwright
 Stockholm

Schweiz

Switzerland
 Suisse
 Svizzera
 Suiza

Altendorf

**Motorenfabrik Hatz AG
 Lidwil
 CH-8852 Altendorf

Tel.: 055 632383/84

Telex: 75 706
 Telegr.: Hatzmotor
 Altendorf SZ

Spanien

Spain
 Espagne
 Spagna
 Espana

Figueras (Gerona)

* Sociéte Industrials FITA
 San Lazaro 54
 Figueras (Gerona)

241 300

Telex: 0058 57177

Türkei

Turkey
 Turquie
 Turchia
 Turcia

Gaziosmanpasa-Istanbul

* Pancar-Motor
 Sanayi ve Ticaret T.A.S.
 Yassiviran Asfalti Üzerinde
 Gaziosmanpasa-Istanbul

Tel.: 23 31 50/51/56

Telegr.:
 Pancarmotor
 Telex: 22 829
 pamo tr

* = Vertretung, Representation, Représentation, Representación, Rappresentaza

** = Niederlassung, Factory branch, Filiale, Establecimiento, Colónia



Äthiopien Ethiopia Ethiopia Etiopa Etiopa	Addis Ababa * Leon's Mercantile Leon K. Erzingatzian Abuna Petros Street P.O.Box 249, Addis Ababa	114 553, 111 765, 112 501 Workshop: 116 836 Telex: 21191 Addis Cables: LERZINGATZIAN Addis Ababa
Agerien Algeria Algerie Algeria Algeria	Alger * Sté. Deselec Rue Kaddour Rahim Hussein-Dey Alger	77.26.47/77.29.59 DIESELEC - ALGER
Angola Angola Angola Angola Angol	Luanda * Ed. Ferreirinha & Irmao (Angola) — Motores e Máquinas EFI, SARL P.O.Box 306 Rua Duarte Pacheco Pereira, 24 Luanda	30343, 30344, 30345 PBX 4101/4102 SOTECMA LUANDA
Elfenbeinküste Ivory Coast Cote-D'Ivoire Costa-D'Avorio Costade Marfil	Abidjan * Societe Abidjan-Industrie (ABI) B.P. 343 Abidjan — Côte d'Ivoire	35-24-60, 35-43-60 Telex: TELONDE ABIDJAN 742
Gabon Gabun Gabon Gabon Gabon	Libreville * SO. GA. TOL. B.P. 706 Libreville	214 - 77 Telex: 5259 GAB Cable: SOGATOL
Gambia Gambia Gambia Gambia Gambie	Banjul * Breckwoldt + Co. (Gambia) Ltd. P.O.Box 281 and 282 23, Buckle Street Banjul	441 cable: brewo banjul telex: booth bth gv 21 (please phone mr. rosenstock)

* = Vertretung, Representation, Représentation, Representación, Rappresentaza

Ghana Ghana Ghana Ghana Ghana	Accra Machinery Service Division of Ghana Consolidated Machinery & Trading Comp. Ltd. P.O.Box 3400 Knutsford Avenue Accra	63921 Telex: 2008
Kamerun Camerun Cameroun Cameroun Camerun	Douala * Sté. Socomi Boite Postale 609 Douala	42-35-40 à Douala Somatin Douala Telex: 5272 Douala
Kanarische Inseln Canari Islands Iles Canaries Isole Canarie Islas Las Canarias	Las Palmas * Enrique Siemens Suc. L. Siemens Box 259 Buenos Aires, 7-11 Las Palmas de Gran Canaria	220411 - 215473 Telex: 95149 ENSIE E Telegr.: Siemens - Las Palmas
Kenia Kenya Kenya Kenya Kenya	Nairobi * Wigglesworth & Co. Kenya Ltd. P.O.Box 30092 Kingston Road Nairobi Industria Area Nairobi	Tel.: Nairobi 57022/32 Telex: Nairobi 22241 Telegr.: PETTINATO NAIROBI
Libyen Libya Libye Libia Libia	Benghazi * Mchamed Feitury Organisation P.O.Box 3010 Benghazi	5404 Cable: FEITURYCO BENGAZI
Mali Mali Mali Mali Mali	Dakar Ets. Freysseline & Fils B. P. No. 1143 Rond-Point Autoroute - Lamine Gueye Dakar / Senegal	369-99 Cables: FREYSSELINE DAKAR Telex: 419

* = Vertretung, Representation, Représentation, Representación, Rappresentaza

Marokko
Maroc
Marocco
Marruecos
Marueco

Casablanca
Somatel
68, rue Mohammed Diouri
Casablanca

608-41
Cable: SOMATEL-
CASABLANCA
Telex: 21835

Mocambique
Mocambique
Mozambique
Mozambico
Mozambique

Lourenco Marques
* Soc. Africana de SAFRIMEX
Importacao e Exportacao, Lda.
Caixa postal 1859,
Lourenco Marques

5156
Safrimex L. M.

Nigeria
Nigeria
Nigeria

Lagos
* U.A.C. of Nigeria Ltd.
M. & E. Division
P.M. BAG 1015
Ebute Metta
Lagos/Nigeria

Tel.: Lagos 43 310
Telegr.: Mequip/
Lagos

Sao Tome
Sao Tome
Sao Tome
Sao Tome
Sao Tome

Sao Tome
^ L. Batista
Caixa Postal 76
Sao Tome

Senegal
Senegal
Sénégal

Dakar
* Matforce, Département de la
Nouvelle Société
Commerciale Senegalaise
(NOSOCO)
AMGR Ateliers Rond Point
Autoroute
Avenue Pdt Lamine Guèye
(B.P. 791)
Dakar / Senegal

Tel.: 369-99
Telex: 503

* Vertretung, Representation, Représentation, Representación, Rappresentaza

<p>Sudan Sudan Soudan</p>	<p>Khartoum * The Walter Drilling & Engineering Co. Ltd. P.O.Box 1073 Khartoum</p>	<p>31552 – 31946 Telegr.: „WADRICOLI“</p>
<p>Südafrika South Africa Afrique Du Sud Africa Africa Del Sur</p>	<p>Johannesburg * HATZ Diesels South Africa (PTY) Ltd. Midmacor House, Cor. Cross & Bosman Streets Ophirton P.O.Box 6036 Johannesburg</p>	<p>Tel.: 836-0721/8 Telegr.: MIDCOR Telex: J 7628</p>
<p>Süd-West-Afrika South West Africa Sud-West-Africa Africa del Sur Este</p>	<p>Windhoek South West Engineering Company (Pty.) Ltd. 186, Jan Jonkerweg, Ausspannplatz P.O.Box 5052 Windhoek</p>	<p>22463 Telex: 48-707 Telegr.: Swenco</p>
<p>Tunesien Tunesia Tunesia Tunez</p>	<p>Tunis * Sté. SO TU MO S.A. Société Tunisienne des Moteurs 131, Avenue de la Liberté Tunis</p>	<p>289.355 -- 3 lignes groupées</p>
<p>Uganda Uganda Ouganda</p>	<p>Kampala * Wigglesworth & Co. Uganda Limited P.O.Box 7127 Plot 71, Seventh Street Kampala</p>	<p>Tel.: Kampala 42628 Telegr.: PETTINATO KAMPALA</p>

* Vertretung, Representation, Représentation, Representación, Rappresentaza

Republique Du Zaire
Zaire
Zaire

Kinshasa
Bureau Technique
BIA S.P.R.L.
B.P. 8843
Route Trafic-Lourd-Limete
Kinshasa 1

77797 - 98
Cable: BIA-Kinshasa
Telex: 275 BIA-KIN

**Zentral-Afrikanische
Republik**
Central African
Republic
Republique Centre-
Afrique (R.C.A.)
Republica Centrale
Africa
Republica Central
Del Africa

Bangui
* Oubangui-Automobile
B.P. 158.524 & 1379
Bangui

Telex: Bangoto 5230
Adr.: télégraphique:
Banguiauto-Bangui

* Vertretung, Representation, Représentation, Representación, Rappresentaza



America

Bolivien

Bolivia
Bolivie
Bolivia
Bolivia
Bolivia

La Paz

HANSA LTDA.
Cajón Postal 1402
La Paz

Tel.: 54 425
54 386
Telex: BX 5261

Brasilien

Brazil
Brasil
Brasile
Brasil

Caxias do Sul-RGS

* Agrale S.A.
Tratores e Motores
Rua Sinimbu, 1260
Caixa postal, 1311
95.100 - Caxias do Sul-RGS

213500
Telegr.: „AGRALE“
Telex: Publico 28892

Canada

Canada
Canada
Canada
Canada

Alberta

Mumford Medland Ltd.
5711 6th Street, S.E.
Calgary

Mumford Medland Ltd.
10809 — 105th Avenue
Edmonton

British Columbia

* Pacific Engines & Equipment
Ltd.
1391 William Street
Vancouver, B.C. V5L 2P6
Canada

Tel.: 40804
Telex: 04-54463

Manitoba

* Mumford Medland Ltd.
576 Wall Street
Winnipeg 10

New Brunswick

Consolidated Engines &
Machinery Co. Ltd.
P.O.Box 848
Moncton

* Vertretung, Representation, Représentation, Representación, Rappresentaza

Canada
Canada
Canada
Canada
Canada

Newfoundland

Seaboard GM Diesel Ltd.
710 Windmill Road
Dartmouth, Nova Scotia

Nova Scotia

Seaboard GM Diesel Ltd.
710 Windmill Road
Dartmouth

Ontario

* Ontario Diesel Ltd.
Box 115
80 Federal Road
Welland

735 / 0282
Telex: 21-5152

Prince Edwards Is.

Consolidated Engines &
Machinery Co. Ltd.
P.O.Box 848
Moncton, New Brunswick

Quebec

* Consolidated Engines &
Machinery Co. Ltd.
8550 Delmeade Road, Town of
Mount Royal
Montreal 9

Saskatchewan

Mumford Medland Ltd.
1250 St. John Street
Regina

Mumford Medland Ltd.
1729 Ontario Avenue
Box 1525
Saskatoon

Vertretung, Representation, Représentation, Representación, Rappresentaza

Chile
Chile
Chili
Cile
Chile

Columbien
Columbia
Columbie
Columbia
Columbia

Costa Rica
Costa Rica
Costa Rica
Costa Rica
Costa Rica

Ecuador
Ecuador
Equateur
Ecuador
Ecuador

El Salvador
El Salvador
El Salvador
El Salvador
El Salvador

Guatemala
Guatemala
Guatemala
Guatemala
Guatemala

Santiago de Chile

* Robert Bosch de Chile
Equipos y Maquinarias S.A.
Av. San Eugenio 68 - Nunoa
P.O.Box 832
Santiago de Chile

Barranquilla

* General Sales Corporation,
Ltda.
Calle 37 No. 46-03
Airmail Box 395, P.O.Box 519

San Jose

* Electro Mercantil Ltda.
Apartado 10.091
San Jose, C.A.

Guayaquil

* Cia. Comercial
Pan-Americana C.A.
General Cordova No. 918-922
Apartado 4964
Guayaquil

San Salvador

* TEMSA
Tecnico Mercantil S.A.
3 Calle Poniente 314, frente a la
Cruz Roja
Apartado 1201
San Salvador

Ciudad de Guatemala

* TEMSA
Tecnico Mercantil S.A.
8 Avenida 15-17 Zona 1
Apartado 659
Guatemala City

259648
Telex: Emasa SGO
353
Cables:
CHILEBOSCH

12-501
cable: Maeco

216788 - 216794
Elmerc
Sanjose Costa Rica
Telex: 222

306 410
Cable:
Panamericana
Guayaquil

214367

21 418
Telegr.: Temerca

* = Vertretung, Representation, Représentation, Representación, Rappresentaza

Guayana	Georgetown	
Guayana	Wieting & Richter, Ltd.	
Guayana	P.O.V. 473	
Guayana	Waterstreet	
Guayana	Georgetown	
Honduras	Tegucigalpa	22-6790
Honduras	Corporacion Comercial S.A.	Cable: MOTZ
Honduras	de C.V.	
Honduras	Apartado 207	
Honduras	Tegucigalpa	
Jamaika	Kingston	936-4935-8
Jamaica	ATCO Ltd.	Cable: ATCOLIM
Jamaique	36, Hagley Park Road	
Jamaica	P.O.B. 412	
Jamaica	Kingston 10, Jamaica, W.I.	
Mexico	Mexico	
Mexico	Motores de Combustion	
Mexique	Interna Wisconsin S.A.	
Messico	Ave. Juarez No. 157	
Mexico	Mexico 1. D.F.	
Peru	Lima	Tel.: 450247
Peru	* Europa Diesel S.A.	Telegr.: EUDISA
Perou	Nueva Av.	NVA. AV. TOMAS
Peru	Tomas Marsano 363—373	MARSANO 363
Peru	Lima 34 — Peru	Lima 34
		Telex: EUDISA —
		SISIDRO PX 5306
Puerto Rico	San Juan	
Puerto Rico	Motorcentro Destro Inc.	725-7513
Puerto Rico	G.P.O. 3707	
Puerto Rico	San Juan	
Puerto Rico		
Surinam	Paramaribo	4343
Surinam	Curacaosche	curtrading
Suriname	Handel-Maatschappij	paramaribo/
Guayana Holandesa	(Suriname) N.V.	suriname
Guayana Holandesa	Postbus 1819 — Paramaribo	

* Vertretung, Representation, Représentation, Representación, Rappresentaza

USA
USA
USA
USA

Wisconsin

* Teledyne Wisconsin Motor
1910 South 53rd Street
Milwaukee/Wisconsin 53246

414-384-5800
Telex: 26629

Alabama

Parts Service Company
225 Clayton Street
Montgomery

Alabama
36104

Alaska

B & C Supply Corp.
P.O.Box 1679
Anchorage

Alaska
99501

Wagner Industrial Inc.
2000 S.E. 11th Ave.
Portland

Oregon
91214

Arizona

Pratt-Gilbert
P.O.Box 2230
Phoenix

Arizona
85002

Arkansas

RCH Distributors, Inc.
P.O.Box 173
3150 Carrier
Memphis

Tennessee
38101

Keeling Supply Company
P.O.Box 778
North Little Rock

Arkansas
72206

California

E. E. Richter & Son, Inc.
6598 Hollis Street
Emeryville

California
94608

Lanco Engine Services, Inc.
12915 Weber Way
Hawthorne

California
90252

* = Vertretung, Representation, Représentation, Representación, Rappresentaza

USA
USA
USA
USA
USA

Colorado

Central Equipment Co.
4477 Garfield Street
Denver

Colorado
80216

Connecticut

John Reiner & Company, Inc.
94-15 150th Street
Jamaica

New York
11435

Delaware

Jos. L. Pinto, Inc.
719 E. Baltimore Pike
East Lansdowne

Pennsylvania
19050

Ronconi Equip. Co.
8815 Telegraph Rd.
Lorton, VA 22079

Virginia
22079

Florida

Marine Industrial Equipment
Corp.
P.O.Box 39, Station G
710 Haines Street
Jacksonville

Florida
32206

P. H. Neff & Sons, Inc.
7270 N.W. 41st Street
P.O.Box 44-216
Miami

Highway Equip. & Supply Co.
1016 West Church Street
Orlando

Florida
32802

Industrial Supply Corp.
P.O.Box 5116
Tampa

Florida
33605

Parts Service Company, Inc.
225 Clayton Street
Montgomery

Alabama
36104

USA
USA
USA
USA

Georgia

Blalock Machinery &
Equipment Co. Inc.
225 Forsyth Street, S.W.
Atlanta

Wilder Motor Co.
301-15th Ave.
Nashville

Hawaii

Lanco Engine Services, Inc.
3140 Koapaka St.
Honolulu

Idaho

Arnold Machinery Co. Inc.
P.O.Box 77425
111 E. 39th Street
Boise

Arnold Machinery Company,
Inc.
P.O.Box 2220
Salt Lake City

Wagner Industrial Inc.
2000 S.E. 11th Ave.
Portland

Illinois

Industrial Engine & Parts Co.
1133 W. Pershing
Chicago

Allied Construction Equipment
Co.
4015 Forest Park Avenue
St. Louis

Engine Power, Inc.
11811 W. Silver Spring Road
Milwaukee

Georgia
30302

Tennessee
37203

Hawaii
96819

Idaho
83707

Utah
84110

Oregon
97214

Illinois
60623

Missouri
63108

Wisconsin
53225

USA
USA
USA
USA
USA

Indiana

Eagle Machine Co., Inc.
635 E. Market Street
Indianapolis

Atlas Machine & Supply, Inc.
1326—30 W. Jefferson
Louisville

Industrial Engine & Parts Co.
1133 W. Pershing Road
Chicago

Indiana

Cincinnati Engine & Parts
Company, Inc.
2863 Stanton Avenue
Cincinnati

Iowa

Port Huron Machinery Co.
301 E. Court Avenue
Des Moines

Kansas

Harley Sales Company
505 South Main Street
Wichita

Kentucky

Womwell Automotive Parts
Co. Inc.
240 Clark Street
Lexington

Atlas Machine & Supply, Inc.
1326—30 W. Jefferson Street
Louisville

Cincinnati Engine & Parts
Company
2863 Stanton Avenue
Cincinnati

Indiana
46207

Kentucky
40203

Illinois
60623

Ohio
45206

Iowa
50308

Kansas
67202

Kentucky
40501

Kentucky
40203

Ohio
45206

USA
USA
USA
USA
USA

Louisiana

Wm. F. Surgi Equipment Corp.
1149 Tchoupitoulas Street
New Orleans

Louisiana
70150

Maine

Diesel Engine Sales &
Engineering Corp.
Fish Pier Road
Boston

Massachusetts
02210

Maryland

Ronconi Equipment Co.
8815 Telegraph Rd.
Lorton

Virginia
22079

Massachusetts

Diesel Engine Sales &
Engineering Corp.
Fish Pier Road
Boston

Massachusetts
02210

Michigan

R. G. Moeller Co.
14415 Meyers Road
Detroit

Michigan
48227

R. G. Moeller Co.
2564 Chicago Drive, S.W.
Grand Rapids

Michigan
49509

Engine Power, Inc.
11811 W. Silver Spring Drive
Milwaukee

Wisconsin
53225

Minnesota

Engine Power, Inc.
6336 Lakeland Avenue, North
Minneapolis

Minnesota
55429

USA
USA
USA
USA
USA

Mississippi

Wm. F. Surgi Equipment Co.
1149 Tchoupitoulas Street
New Orleans

RCH Distributors, Inc.
P.O.Box 173
3150 Carrier St.
Memphis

Missouri

A. A. Klughartt Machinery
Company
1205 Woodswether Road
Kansas City

Allied Construction Equipment
Company
4015 Forest Park Avenue
St. Louis

Montana

Midland Implement Co. Inc.
P.O.Box 2533
402 Daniels Street,
N.P. Industrial Site
Billings

Nebraska

Port Huron Machinery &
Supply Company
801-813 "Q" Street
Lincoln

Nevada

E. E. Richter & Son, Inc.
6598 Hollis Street
Emeryville

Lanco Engine Services, Inc.
12915 Weber Way
Hawthorne (Los Angeles)

Louisiana
70150

Tennessee
38101

Missouri
64105

Missouri
63108

Montana
59101

California
94608

California
90252

USA
USA
USA
USA
USA

Nevada
Arnold Machinery Company, Inc.
2975 W. 21 St. South
Salt Lake City

Utah
84110

New Hampshire
Diesel Engine Sales &
Engineering Corp.
Fish Pier Road
Boston

Massachusetts
02210

New Jersey
John Reiner & Company, Inc.
94-15 150th Street
Jamaica

New York
11435

Jos. L. Pinto, Inc.
719 E. Baltimore Pike
East Lansdowne

Pennsylvania
19050

New Mexico
Central Motive Power Inc.
808 Second Street, N.W.
Albuquerque

New Mexico
87101

New York
John Reiner & Co. Inc.
946 Spencer Street
Syracuse

New York
13208

John Reiner & Co., Inc.
94-15 150th Street
Jamaica

New York
11435

North Carolina
King-McIver Sales, Inc.
New Burnt Poplar Rd.
P.O.Box 30088
Greensboro

North Carolina
27420

USA
USA
USA
USA
USA

North Dakota Northern Engine & Supply Co. 2710 Third Avenue North Fargo	North Dakota 58102
Ohio Cincinnati Engine & Parts Co. Inc. 2863 Stanton Avenue Cincinnati	Ohio 45206
Allied Farm Equipment, Inc. 1066 Kinnear Road Columbus	Ohio 43212
Allied Farm Equipment, Inc. 3721 Mahoning Avenue Youngstown	Ohio 44515
Eagle Machine Company, Inc. 635 E. Market Street Indianapolis	Indiana 46207
Oklahoma Harley Sales Company P.O.Box 45450 Tulsa	Oklahoma 74145
Oregon Messrs. Wagner Industrial, Inc. 2000 S. E. 11th Avenue Portland/Oregon 97214	Oregon 97210
Arnold Machinery Co. P.O.Box 2220 Salt Lake City	Utah 84110

USA
USA
USA
USA
USA

Pennsylvania

Hamilton Equipment, Inc.
P.O.Box 478
Ephrata

Jos. L. Pinto, Inc.
719 E. Baltimore Pike
East Lansdowne

Contractors Equipment Service
Co.
1415 Brighton Road, N.S.
Pittsburgh

Allied Farm Equipment, Inc.
3721 Mahoning Avenue
Youngstown

Pennsylvania
19050

Pennsylvania
15212

Ohio
44515

Rhode Island

Diesel Engine Sales &
Engineering Corp.
Fish Pier Road
Boston

Massachusetts
02210

South Carolina

King-McIver Sales Inc.
P.O.Box 20088
New Burnt Poplar Rd.
Greensboro

North Carolina
27420

South Dakota

Nortern Engine & Supply
2710 Third Avenue North
Fargo

North Dakota
58102

Tennessee

Wilder Motor Co.
301 — 15th Avenue
Nashville,

Tennessee
31203

USA
USA
USA
USA
USA

Tennessee
RCH Distributors, Inc.
3150 Carrier St.
P.O.Box 173
Memphis

Tennessee
38101

Texas
Harley Sales Co.
8005 Sovereign Row
Dallas

Harley Sales Co.
4427 West 12th St.
Houston

Texas
77001

Harley Sales Company
3220 Kermit Highway
Odessa

Texas
79761

Utah
Arnold Machinery Company, Inc.
2975 W. 21 St. S.
Salt Lake City

Utah
84110

Vermont
Diesel Engine Sales &
Engineering Corp.
Fish Pier Road
Boston

Massachusetts
02210

Virginia
Ronconi Equipment Co.
8815 Telegraph Rd.
Lorton

Virginia
22019

Engine Sales & Service Co. Inc.
919 Virginia Street, East
Charleston

West Virginia
25301

USA	West Virginia	West Virginia
USA	Engine Sales & Service Co., Inc.	25301
USA	919 Virginia Street, East	
USA	Charleston	
USA	Contractors Equipment Service Co.	Pennsylvania
	1415 Brighton Road, N.S.	15212
	Pittsburgh	
	Ronconi Equipment Co.	Virginia
	8815 Telegraph Rd.	22079
	Lorton	
	Wisconsin	Wisconsin
	Engine Power, Inc.	53225
	11811 W. Silver Spring Drive	
	Milwaukee	
	Wyoming	Wisconsin
	Engine Power, Inc.	53246
	11811 W. Silver Spring Drive	
	Milwaukee	
	Central Equipment Company	Colorado
	4477 Garfield	80216
	Denver	
	Midland Implement Company Inc.	Montana
	P.O.Box 2533	59101
	Billings	
	Arnold Machinery Company Inc.	Utah
	P.O.Box 2220	84110
	Salt Lake City	
Venezuela	Caracas	76 82 51, 76 54 11
Venezuela	* Motores y Maquinarias, C.A.	Cable:
Venezuela	(MYM)	BEVREL CARACAS
Venezuela	Apartado Postal 6034	
Venezuela	Caracas	

* = Vertretung, Representation, Représentation, Representación, Rappresentaza

HATZ-Service



Asia

Cyprn
Cyprus
Chypre
Cipro
Chipre

Nicosia
Chr. Mavromatis & Sons Limited
55, Aeschylus Street
P.O.Box 1683
Nicosia

63685, 65468
Telex: 2363
Cable: Promitheus
Nicosia

Indonesien
Indonesia
Indonesie
Indonesia
Indonesie

Jakarta
* Setio Indo Trading Co.
Sole Agent "HERBINDO"
Jalan Hayam Wuruk 78 A
P.O.Box 2595
Jakarta

Tel.: 24555, 26994
Cable: HERBCHEM

Iran
Iran
Iran
Iran
Iran

Teheran
* Shoreh Trading Co. Ltd.
188 Eisenhower Avenue
Eskandari Cross Road
P.O.Box 2290
Teheran - 13

921034 - 7
Telex: 2763 IRANIS
Cable: Polkar
Teheran

Japan
Japan
Japan
Japone
Japon

Tokio
* Western Trading Co. Ltd.
4-6 Roppongi
2-Chome
Minato-Ku
Tokio - 106

(583) 2111
Telex: Westraj
0242 - 2422
Cable: Westra

Kuwait
Kuwait
Kuwait
Kuwait
Kuwait

Kuwait
* Sabah International
Merchant, Import &
Manufacturer's Representative
P.O.Box 1026
Kuwait / Arabian Gulf

424 502
Teleg.: STARFISH
KUWAIT

* Vertretung, Representation, Représentation, Representación, Rappresentaza

Libanon
Lebanon
Liban
Libano
Libano

Malaysia
Malaysia
Malaysia
Malaysia
Malaysia

Singapur

Philippinen
Philippines
Philippines
Filipine
Filipinas

Saudi Arabien
Saudi Arabia
Arabie Saoudite
Saudi Arabien
Saudi Arabien

Süd Vietnam
Süd Vietnam
Süd Vietnam
Süd Vietnam
Süd Vietnam

Beirut

* Itani & Shihab Trading Co.
Patriarche Hoyek Street
Khan — Antoun Bey
P.O.Box 4537
Beirut

Petaling Jaya

* ENERA Sendirian Berhad
No. 2A, Lot 2, Jalan 215,
Petaling Jaya, MALAYSIA

Petaling Jaya

* ENERA Sendirian Berhad
No. 2A, Lot 2, Jalan 215,
Petaling Jaya, MALAYSIA

Manila

* MEDALIST INDUSTRIES, Inc.
CCC Bldg., Buendia Avenue
Makati, Rizal
P.O.Box 3245
Manila

Jeddah

ALFADEL ESTABLISHMENT
TRADING — CONTRACTING
Mecca Road — Km 3
P.O.Box 2349
Jeddah

Saigon

* Messrs. Vinimac S.A.
747 (2nd Floor) Tran Hung Dao
Saigon

249432 - 294632
Istraco - Beirut

Tel.: 77 36 16
Telex:
Socoil MA 39 529
Cable:
GOOD ENGINE

Tel.: 77 36 16
Telex:
Socoil MA 39 529
Cable:
GOOD ENGINE

Tel.: 883051
884614
889821
Telex:
7222393 MDL PH
Cable: MEDALIST

Tel.: 32344
Cable: MORTACON

* = Vertretung, Representation, Représentation, Representación, Rappresentaza

Taiwan
Taiwan
Taiwan
Taiwan
Taiwan

Taiwan

* Hung Yeh Trading Corporation
728, Chung Shan Road,
Chung Ho Hsiang
Taipei Hsien, Taiwan,
Republic of China
Mailing address:
P.O.Box 23, Panchao,
Taipei Hsien
Taiwan 220, Republic of China

960140 - 5, 962141 - 5,
965141 - 5 (15 wires)
Cable Adresse:
CHEM
Telex: 31102 CHEM

Chung Hsin North Area
Service Station
25, Ku Ling Street, Taipei
Taiwan 107, Republic of China

344082, 346232

Chung Hsin Central Area
Service Station
21-15 Kung Yuan Road,
Taichung
Taiwan 400, Republic of China

042 - 30241

Chung Hsin South Area
Service Station
82, Chung Shan 1st Road,
Kaohsiung
Taiwan 800, Republic of China

07 - 239071

Thailand
Thailand
Thailand
Thailandia
Thailandia

Bangkok

* Ekman & Co. Ltd.
561/1, Soi (Soi Swasdee)
Sukhumvit Road
P.O.Box 11-161
Bangkok

Telex: BK 2753
Telegr.:
„Ekmans Bangkok“

* = Vertretung, Representation, Représentation, Representación, Rappresentaza

HATZ-Service

Australia



Australien

Australia
Australie
Australia
Australia

Bankstown N.S.W. 2200

* HATZ DIESEL Sales & Service
31-35 Hoskins Ave.
P.O.Box 204
Bankstown W.S.W. 2200

Tel.: (02) 709 4 777
Telex: AA 230 73
Cable: CLAEMARINE
SYDNEY

Neu-Kaledonien

New Caledonia
Nouvelle-Caledonie
Nouva-Caledonia
Nueve Caledonia

Noumea

* ABC-Import
Ste Minier-Mouledous & Cie
28 Rue de Verdun
B.P. 617
Nouméa
Nouvelle-Calédonie
Pacifique Sud

720-49
Cables:
ABC NOUMEA

Tahiti

Tahiti
Tahiti
Tahiti
Tahiti

Papeete

* Société d'Oxygène et
d'Acétylène d'Extrême — Orient
B.P. 632
Papeete

2.74.06

S.T.I.C.

B.P. 129
Papeete

2.81.16, 2.81.17,
2.71.00
Telex: 071 FP
COWAN
Telegr.: STIC
PAPEETE

Neuseeland

New Zealand
Nouvelle-Zélande

Wellington

* DIS Industries Limited
42 Kent Terrace
P.O.B. 2280
Wellington 1,

557 - 957
Cables:
DISL Wellington 1,
New Zealand

Penrose

DIS Industries Limited
Church Street
Penrose, Auckland

592 - 109

* Vertretung, Representation, Représentation, Representación, Rappresentaza

Neuseeland
New Zealand
Nouvelle-Zélande





Christchurch
DIS Industries Limited
Blenheim Road
Christchurch

41 - 485

This list takes into account mainly service stations of English speaking countries. If you wish to be informed of the complete Hatz network, ask for our booklet "Hatz all over the world", listing over 250 service stations throughout the world.



builds

-  **single-cylinder**
-  **two-cylinder**
-  **three-cylinder**
-  **four-cylinder**

Diesel engines

aircooled fourstroke

from 1,5 to 80 HP

When ordering spare parts

Please always indicate:

1. Engine number
2. part/order-no.
3. Designation
4. Quantity

For example: **For engine no. 11 X 955287**
00302401 lever for governor spring 1 piece

5. Exact address, mentioning railway station
6. Please do not prescribe: "as quick as possible" or "immediately", but "per parcel post", "express", "airmail", or "freight" and "express-freight", etc.
7. In case there is no mode of dispatch indicated, we shall not choose the quickest, but the cheapest one.



Original spare parts

**guarantee troublefree repair and operation
as well as long engine life !**

Exact orders will avoid misunderstanding !

In doubtful cases send us the damaged part !

In guarantee cases, please send us the damaged part !

Guarantee covers cost of damaged parts only.

Repairs will be charged as low as possible.

Price quotations without obligation will be supplied on request.

Repairs and part deliveries only against „cash on delivery“.

In general our normal sales- and delivery terms are applicable.

Ruhstorf/Rott, Sept. 1975

Quote when ordered

Quant. for type

Table No.	Item No	Part/ Ordering No.	DESIGNATION	Quant. for type		
				U 80	U 85	U 86
		00326700	GASKET SET.	1	-	-
		00326800	GASKET SET CYL.HEAD	1	-	-
		00331200	GASKET SET.	-	1	-
		00331300	GASKET SET CYL.HEAD	-	1	-
		00333300	GASKET SET.	-	-	1
		00333400	GASKET SET CYL.HEAD	-	-	1
			CRANKCASE =====			
1	1	00339202	CRANKCASE WITH ITEM NO.3-4,7-8. . .	1	1	-
1	1	00333602	CRANKCASE WITH ITEM NO.3-4,7-8. . .	-	-	1
1	3	03025802	RING FOR OIL OVERFLOW	1	1	1
1	4	50043600	CLOS.SCREW M 10X1	2	2	2
1	7	50036700	PIN 6X22.	2	2	2
1	8	50037300	STUD M 8X18	11	11	11
1	8A	03229201	CAP SCREW R 3/4	1	1	1
1	10	00302401	LEVER F.GOVERNOR SPRING	1	1	1
1	13	03146200	FRICTION DISC	1	1	1
1	14	03023601	HANDLEVER	1	1	1
1	15	50010600	FITTING KEY A 4X4X14.	1	1	1
1	16	50016900	DISC 10,5	1	1	1
1	17	50023800	HEXAGON NUT BM 10	2	2	2
1	18	03146001	GOVERNOR SPRING 3,7 N=1500-2750 . .	1	1	1
1	19	03145900	GOVERNOR SPRING 3,5	1	1	1
			(ONLY WITH GENERATOR N=1500)			
1	20	00333701	GOVERNOR LEVER	1	1	1
1	23	03021400	PIN F.GOVERNOR LEVER	1	1	1
1	24	50025600	HEXAGON SCREW BM 6X12	1	1	1
1	25	50026200	HEXAGON SCREW BM 6X30	1	1	1
1	26	03133200	DISC	1	1	1
1	27	50036100	PIN 2X22.	1	1	1
1	28	03022200	ECCENTRIC	1	1	1
1	29	50040700	STUD M 10X30.	1	1	1
1	30	50023800	HEXAGON NUT BM 10	2	2	2
1	31	03156700	THREADED BOLT	1	1	1
1	31A	50023200	HEXAGON NUT AM 8.	1	1	1
1	32	03155901	COVER SMALL	1	1	1
1	33	03156000	GASKET FOR COVER.	1	1	1
1	36	03021601	COVER BIG	1	1	1
1	37	03146100	GASKET FOR COVER.	1	1	1

Table No.	Item No	Quote when ordered		Quant. for Type		
		Part/ Ordering No.	DESIGNATION	Q3 W	Q5 W	Q6 W
1	38	50026700	HEXAGON SCREW M 8X15.	4	4	4
1	38A	50027000	HEXAGON SCREW M 8X25.	3	3	3
1	39	00442500	DIPSICK W.ITEM NO.41	1	1	1
1	41	40022400	WASHER.	1	1	1
<u>FULL LOAD LIMIT WITH START FILLING</u> =====						
		00441601	EXTRA FUEL DEVICE	1	1	1
		00335301	ECCENTRIC SHAFT WITH ITEM NO.42-45.	1	1	1
1	46	03036000	THREADED BUSH	1	1	1
1	47	50024000	HEXAGON NUT M 12.	1	1	1
1	48	03160200	PRESSURE SPRING	1	1	1
1	49	03039801	DRAW BUTTON	1	1	1
1	50	03160300	CAPSULE	1	1	1
1	50A	03160400	HEXAGON NUT M 6X0,75.	1	1	1
1	51	03033100	COVER	1	1	1
1	52	50030900	HEXAGON SCREW M 12X20	2	2	2
1	53	03031900	ENGINE BRACKET GOV.SIDE	1	1	1
1	53A	03033800	ENGINE BRACKET START.DEV.	1	1	1
1	54	50029300	HEXAGON SCREW M 10X30	8	8	8
1	55	50002900	SPRING WASHER 10.	8	8	8
1	56	50012400	SLOTTED SET PIN 5X24.	1	1	1
1	57	03169103	OIL DRAIN PLUG R 1/2 WITH MAGNET. .	1	1	1
1	58	50001500	JOINT A 21X26	1	1	1
CRANKSHAFT =====						
2	1	00327101	CRANKSHAFT WITH COVER 25.	1	1	-
		50043200	COVER 25.	1	1	1
2	1	00327001	CRANKSHAFT WITH ITEM NO.1-11.	1	1	-
2	1	00333901	CRANKSHAFT WITH COVER 25.	-	-	1
2	1	00333801	CRANKSHAFT WITH ITEM NO.1-11.	-	-	1
2	2	03023101	COUNTER WIGHT	2	2	-
2	2	03035901	COUNTER WIGHT	-	-	2
2	4	50055000	ALLEN SCREW M 10X50	4	4	4
2	5	50002900	SPRING WASHER 10.	4	4	4
2	6	50047600	CYL.ROLLER BEARING NJ 309 E	1	1	1
2	7	50022100	CIRCLIP 100X3	1	1	1
2	8	50048900	CYL.ROLLER BEARING NUP 309 E.	1	1	1
2	9	03028701	INTERMEDIATE RING	1	1	1
2	10	50011900	FITTING KEY A 10X8X35	1	1	1
2	11	40023700	WASHER 45X49X2.	1	1	1

Quote when ordered

Quant. for Type

Table No.	Item No.	Part/ Ordering No.	DESIGNATION	Quant. for Type		
				W 50	W 50	W 50
2	12	03027502	GEARWHEEL FOR CRANKSHAFT.	1	1	1
2	13	03021100	DISC.	1	1	1
2	14	50031200	HEXAGON SCREW M 12X30	1	1	1
2	15	50003000	SPRING WASHER 12.	1	1	1
2	16	03146300	PLATE SPRING.	2	2	2
2	17	03285300	HEXAGON NUT M 30X1,5.	1	1	1
2	17A	03026000	HEXAGON NUT	1	1	1
2	18	50005100	THREADED PIN AM 10X25	1	1	1
2	18A	03198600	SECURITY PLATE.	1	1	1
2	19	50018100	DISC SPRING 8X11.	1	1	1
			BEARING FLANGE =====			
2	20	00327301	BEARING FLANGE WITH ITEM NO.21. . .	1	1	1
2	21	50045400	OIL SEAL RING 8 55X70X8	1	1	1
2	22	03146401	GASKET FOR BEARING FLANGE	1	1	1
2	23	50018800	SECURITY PLATE 8,4.	8	8	8
2	24	50022900	HEXAGON NUT M 8	8	8	8
			FLYWHEEL =====			
2	25	03038100	FLYWHEEL.	-	-	1
2	25	03038200	FLYWHEEL (HEAVY DESIGN)	-	-	1
2	26	03032400	FLYWHEEL.	1	1	-
2	26	03032500	FLYWHEEL (HEAVY DESIGN)	1	1	-
			BLOWER RING =====			
2	27	03030300	BLOWER RING	1	1	-
2	28	50052700	ALLEN SCREW M 8X50.	4	4	-
2	29	50002800	SPRING WASHER	4	4	-
			PISTON =====			
2	30	00327502	PISTON WITH RINGS	1	-	-
2	30	00331402	PISTON WITH RINGS	-	1	-
2	30	00334701	PISTON WITH RINGS	-	-	1
2	30A	00570401	PISTON RING-SET	1	-	-
2	30A	00570801	PISTON RING SET	-	1	-
2	30A	00571001	PISTON RING SET	-	-	1
2	31	50088000	GUDGEON PIN	1	-	-
2	31	50090001	GUDGEON PIN	-	1	-
2	31	50100501	GUDGEON PIN	-	-	1

Quote when ordered

Quant. for Type

Table No.	Item No.	Part/Ordering No.	DESCRIPTION	QTY	QTY	QTY
2	32	50020800	CIRCLIP 30X1,2.	2	2	2
2	33	50088300	COMPRESSION RING.	1	-	-
2	34	50088101	COMPRESSION RING.	1	-	-
2	35	50088900	OIL CONTROL RING.	1	-	-
2	33	50099300	COMPRESSION RING.	-	1	-
2	34	50099500	2-FACED COMPRESSION RING.	-	1	-
2	35	50100301	OIL CONTROL RING.	-	1	-
2	33	50100800	COMPRESSION RING.	-	-	1
2	34	50101000	2-FACED COMPRESSION RING.	-	-	1
2	35	50101600	OIL CONTROL RING.	-	-	1
CONNECTING ROD =====						
2	36	00301101	CONNECTING ROD.	1	1	1
2	37	50036300	PIN 5X8	1	1	1
2	38	03021500	BUSH FOR CONROD	1	1	1
2	39	03146701	CONROD SCREW.	2	2	2
2	40	03146501	BIG END BEARING	1	1	1
CYLINDER =====						
2	41	03028902	CYLINDER.	1	-	-
2	41	03033602	CYLINDER.	-	1	-
2	41	03040301	CYLINDER.	-	-	1
2	41	00565300	CYLINDER WITH PISTON	1	-	-
2	41	00565500	CYLINDER WITH PISTON	-	1	-
2	41	00565600	CYLINDER WITH PISTON	-	-	1
2	42	03148300	STUD.	4	4	4
2	43	50023900	HEXAGON NUT M 12.	4	4	4
CYLINDER HEAD =====						
3	1	00327700	CYLINDER HEAD WITH ITEM NO.2-4.	1	-	-
3	1	00331600	CYLINDER HEAD WITH ITEM NO.2-4.	-	1	-
3	1	00334901	CYLINDER HEAD WITH ITEM NO.2-5.	-	-	1
3	2	03148401	VALVE GUIDE	2	2	2
3	3	50036500	PIN 5X12.	2	2	2
3	4	50037700	STUD M 8X20	2	2	-
3	4	50037500	STUD M 8X20	-	-	2
3	5	50038300	STUD M 8X30	-	-	2
3	5A	50022900	HEXAGON NUT M8.	-	-	2

Quote when ordered

Quant. for Type

Table No.	Item No	Part/ Ordering No.	DESIGNATION	Quant. for Type		
				E 80	E 85	E 88
3	6	03148800	GASKET FOR CYL.-HEAD 0,5 *	1	-	-
3	6	03148900	GASKET FOR CYL.-HEAD 0,6 *	1	-	-
3	6	03149300	GASKET FOR CYL.-HEAD 0,7 *	1	-	-
3	6	03149400	GASKET FOR CYL.-HEAD 0,8 *	1	-	-
3	6	03149500	GASKET FOR CYL.-HEAD 0,9 *	1	-	-
3	6	03155400	GASKET FOR CYL.-HEAD 0,5 *	-	1	-
3	6	03155500	GASKET FOR CYL.-HEAD 0,6 *	-	1	-
3	6	03155600	GASKET FOR CYL.-HEAD 0,7 *	-	1	-
3	6	03155700	GASKET FOR CYL.-HEAD 0,8 *	-	1	-
3	6	03155800	GASKET FOR CYL.-HEAD 0,9 *	-	1	-
3	6	03158600	GASKET FOR CYL.-HEAD 0,6 *	-	-	1
3	6	03159300	GASKET FOR CYL.-HEAD 0,7 *	-	-	1
3	6	03159400	GASKET FOR CYL.-HEAD 0,8 *	-	-	1
3	6	03159500	GASKET FOR CYL.-HEAD 0,9 *	-	-	1
3	7	40022500	WASHER 11X18X4.	2	2	2
3	8	03149100	CAP	2	2	2
			ROCKER HOUSING =====			
4	1	03024405	ROCKER HOUSING.	1	1	-
4	1	03037004	ROCKER HOUSING.	-	-	1
4	2	03148700	JOINT WASHER. (MOUNTING DEVICE SEE TABLE 3 STIPPLED)	2	2	2
4	3	03026900	VALVE INLET	1	1	-
4	3	03038800	VALVE INLET	-	-	1
4	4	03026800	VALVE EXHAUST	1	1	-
4	4	03038900	VALVE EXHAUST	-	-	1
4	5	03148501	VALVE SPRING.	2	2	-
4	5	03158701	VALVE SPRING.	-	-	2
4	6	50019400	CIRCLIP 8X0,8	2	2	2
4	7	03148600	COLLETT	2	2	2
4	8	03022300	CUP INLET	1	1	1
4	9	03035600	CUP EXHAUST	1	1	1
4	10	00327901	ROCKER INLET WITH ITEM NO.14-15 . .	1	1	1
4	11	00328001	ROCKER EXHAUST WITH ITEM NO.14-17 .	1	1	1
4	13	03033401	SHIM 4,0 *	-	-	1
4	13	03405300	SHIM 4,1 *	-	-	1
4	13	03400700	SHIM 4,2 *	-	-	1
4	13	03400800	SHIM 4,3 *	-	-	1
		03329600	LIFTING STRAP	1	1	1
		50029200	HEXAGON SCREW M 10X25 **	2	2	2
		50002900	SPRING WASHER **	2	2	2

*ACCORDING TO REQUIRMENTS

**NOT NECESSARY FOR MOUNTING OF FUEL TANK

Quote when ordered

Quant. for Type

Table No.	Item No.	Part/ Ordering No.	DESIGNATION	Quant. for Type		
				10	50	50
4	13A	03169400	SHIM 0,1 *	1	1	-
4	13A	03169600	SHIM 0,2 *	1	1	-
4	13A	03169700	SHIM 0,3 *	1	1	-
4	13A	03169800	SHIM 0,5 *	1	1	-
4	14	03022100	ADJUSTING SCREW	2	2	2
4	15	03149000	HEXAGON NUT M 10X1.	2	2	2
4	16	03022001	ADJUSTING SCREW	1	1	1
4	17	50022700	HEXAGON NUT M 6	1	1	1
4	18	03148901	ROCKER SHAFT.	1	1	1
4	19	40022300	WASHER 8X12X2	4	4	4
4	21	50018700	SECURITY PLATE 6,4.	1	1	1
4	22	03023800	DECOMPRESSION LEVER	1	1	1
4	23	50019500	CIRCLIP 12X1.	2	2	2
4	24	50009800	BALL 6 MM	1	1	1
4	25	03159100	PRESSURE SPRING	1	1	1
4	26	03079500	GAP SCREW M 10X1.	1	1	1
4	27	03150901	STUD M 8X30	1	1	1
4	28	03149700	VALVE DIAPHRAGM	1	1	1
4	29	03158800	STROKE LIMITATION	1	1	1
4	30	50022900	HEXAGON NUT M 6	1	1	1
4	31	03158900	GASKET.	1	1	1
			BREATHER =====			
4	32	00304303	COVER WITH TUBE	1	1	1
4	33	50000900	JOINT A 8X11,5	1	1	1
4	34	40028400	HEXAGON NUT M 8	1	1	1
4	35	00328100	IGNITION PAPER HOLDER	1	1	1
4	36	00328200	IGNITION PAPER HOLDER WITH HANDLE	1	1	1
4	37	03143603	COVER	1	1	-
4	37	03159602	COVER	-	-	1
4	38	50052200	ALLEN SCREW M 8X30.	4	4	4
4	39	03149801	GASKET FOR COVER.	1	1	-
4	39	03159701	GASKET FOR COVER.	-	-	1
4	43	03159200	PIPE CLIP	1	1	1
4	44	50000900	JOINT A 8X11,5.	1	1	1
4	45	03228800	JOINT 1,0	1	1	1
4	46	50044700	CLOSING SCREW R 1/4	1	1	1

* ACCORDING TO REQUIREMENTS

Quote when ordered

Quant. for Type

Table No.	Item No.	Part/ Ordering No.	DESIGNATION	Quant. for Type		
				E 80	E 85	E 89
			<u>CAMSHAFT</u> =====			
5	1	00538501	CAMSHAFT WITH 2 GOV.WEIGHTS	1	1	1
			CONSISTING OF ITEM NO.1A-10			
5	1	00538700	CAMSHAFT WITH 4 GOV.WEIGHTS	1	1	1
			CONSISTING OF ITEM NO.1A-10			
5	1	00538601	CAMSHAFT WITH 3 GOV.WEIGHTS	1	1	1
			CONSISTING OF ITEM NO.1A-10			
5	1A	00334501	CAMSHAFT WITH FITTING KEY	1	1	1
5	5	00334302	GOVERNOR SLEEVE WITH ITEM NO.5A	1	1	1
5	5A	40031100	CIRCLIP	1	1	1
5	6	40036100	AXIAL BEARING STAR.	1	1	1
5	7	50021600	CIRCLIP 45X1,75	1	1	1
5	8	03027403	GEARWHEEL FOR CAMSHAFT.	1	1	1
5	9	03037701	GOVERNOR WEIGHT *			
5	10	03156900	PIN FOR GOVERNOR WEIGHT *			
5	11	50015500	GROOVED BALL BEARING 16014.	1	1	1
5	12	50014700	GROOVED BALL BEARING 6304	1	1	1
			<u>GOVERNOR HOUSING</u> =====			
5	13	00328500	GOVERNOR HOUSING W.ITEM NO.14-14B	1	1	1
5	14	50045600	OIL SEAL B 70X85X8.	1	1	1
5	14A	03168901	CAP SCREW	1	1	1
5	14B	40023600	WASHER 36X44X4.	1	1	1
5	15	03150000	GASKET.	1	1	1
5	16	50051900	ALLEN SCREW M 8X20.	9	9	9
5	17	50052100	ALLEN SCREW M 8X25.	1	1	1
			<u>PUSHROD AND PROTECTION TUBE</u> =====			
5	18	00335100	PUSHROD	2	2	2
5	19	03159800	TAPPET.	2	2	2
5	20	03038002	PROTECTION TUBE	1	1	1
5	21	03160100	WASHER.	1	1	1
5	22	03160000	PRESSURE SPRING	1	1	1
5	23	03159900	PRESSURE RING	2	2	2
5	24	40023500	WASHER 35X47X6.	2	2	2
			<u>OIL PUMP</u> =====			
5	25	00429202	OIL PUMP.	1	1	1

* 2-4 PIECES ACC.TO SPEED

Quote when ordered

Quant. for Type

Table No.	Item No.	Part / Ordering No.	DESIGNATION	Quant. for Type		
				80	85	89
5	26	50010400	FITTING KEY	1	1	1
5	27	03027802	GEARWHEEL F.OIL PUMP DRIVE.	1	1	1
5	28	40028400	HEXAGON NUT M 8	1	1	1
5	29	03149900	GASKET.	1	1	1
5	30	50027500	HEXAGON SCREW M 8X35.	1	1	1
5	31	50002800	SPRING WASHER 8	1	1	1
<u>INJECTION PUMP AND INJECTION VALVE</u>						
5	32	40005101	INJECTION PUMP.	1	1	--
5	32	40005301	INJECTION PUMP	--	--	1
5	33	50022900	HEXAGON NUT M 8	3	3	3
5	34	03168301	SHIM 0,15 *	1	1	1
5	34	03168500	SHIM 0,20 *	1	1	1
5	34	03168600	SHIM 0,25 *	1	1	1
5	34	03168700	SHIM 0,30 *	1	1	1
5	35	40006000	INJECTION VALVE WITH NOZZLE	1	1	--
5	36	40006301	INJECTION VALVE WITH NOZZLE	--	--	1
5	35	40004400	NOZZLE.	1	1	--
5	36	40004500	NOZZLE.	--	--	1
5	39	03160500	JOINT WASHER.	1	1	1
		49009500	BANJO BOLT	1	1	1
<u>STARTING HANDLE</u>						
5	41	00302302	STARTING HANDLE	1	1	1
5	42	03024901	CRANK JAW	1	1	1
5	43	50053800	ALLEN SCREW M 10X25	2	2	2
<u>SUCTION NIPPLE</u>						
5	44	00328702	SUCTION NIPPLE.	1	1	1
5	45	50001800	JOINT A 30X36	1	1	1
<u>OIL RELIEF VALVE</u>						
5	46	00328801	OIL RELIEF VALVE	1	1	1
5	47	50001600	JOINT A 22X27	1	1	1
5	48	03150100	CAP SCREW	1	1	1
5	49	50033300	HEXAGON SCREW M 8X1X12.	1	1	1
5	50	50000900	JOINT A 8X11,5.	1	1	1
<u>FUEL TANK</u>						
6	1	00329001	FUEL TANK 7 LTRS.	1	1	1

* ACCORDING TO REQUIREMENTS

Quote when ordered

Quant. for Type

Table No.	Item No.	Part/ Ordering No.	DESIGNATION	Quant. for Type		
				W	S	W
6	1	00329301	FUEL TANK 10 5 LTRS.	1	1	1
6	2	40032700	CAP SCREW B 40.	1	1	1
6	3	00329102	FUEL FILTER	1	1	1
6	3A	40043800	FILTER ELEMENT	1	1	1
6	4	03150201	GASKET.	1	1	1
6	5	50050300	ALLEN SCREW M 6X8	4	4	4
6	6	50055900	ALLEN SCREW M 10X120. (FOR 7 LTRS.TANK)	2	2	2
6	6	03150500	STUD (FOR 10,5 LTRS.TANK)	2	2	2
6	7	50053800	ALLEN SCREW M 10X25	2	2	2
6	8	50002900	SPRING WASHER 10.	4	4	4
6	9	50023500	HEXAGON NUT M 10. (FOR 10,5 LTRS.TANK)	2	2	2
6	15	00339301	FUEL PRESSURE PIPE.	1	1	-
6	15	00335401	FUEL PRESSURE PIPE.	-	-	1
6	16	03160600	FUEL PIPE	1	1	1
6	17	03150801	FUEL LEAK-OFF PIPE.	1	1	1
6	18	50006100	BANJO BOLT A 2/3.	2	2	2
6	19	50000900	JOINT A 8X11,5.	4	4	4
6	20	50006400	BANJO BOLT A 8.	1	1	1
6	21	50001200	JOINT A 14X18	2	2	2
6	22	50006300	BANJO BOLT A 6.	1	1	1
6	23	50001100	JOINT A 12X16	2	2	2
6	24	03150900	CLAMP	1	1	1
6	25	50000300	FIXING STRAP BSN 12	1	1	1
6	26	50050500	ALLEN SCREW M 6X12.	1	1	1
			COOLING AIR DUCT =====			
6	27	03036601	COWLING BIG	1	1	1
6	28	03024601	COWLING SMALL	1	1	-
6	28	03036501	COWLING SMALL	-	-	1
6	29	50005900	ALLEN SCREW AM5X8	3	3	3
6	30	40028200	HEXAGON NUT M 5	3	3	3
6	31	50049400	ALLEN SCREW M 5X20.	2	2	2
6	32	03449200	ANGLE	1	1	1
6	33	50049500	ALLEN SCREW M 5X50.	1	1	-
6	33	50049900	ALLEN SCREW AM 5X75	-	-	1
6	34	40028200	HEXAGON NUT M 5	1	1	1

Quote when ordered

Quant. for Type

Table No.	Item No.	Part/ Ordering No.	DESIGNATION	Quant. for Type		
				80	85	89
<u>EXHAUST</u> =====						
6	35	03020801	EXHAUST ELBOW	1	1	-
6	35	03034200	EXHAUST ELBOW	-	-	1
6	36	50002000	GASKET 26 CU AS 2,5	1	1	-
6	36	50002200	GASKET 36 CU AS 2,5	-	-	1
6	38	50023000	HEXAGON NUT M 8 MS.	2	2	2
<u>FLEXIBLE COUPLING, FLYWHEELSIDE</u> =====						
7	1	00329500	FLANGE WITH 3 BOLTS	1	1	1
7	1	00335500	FLANGE WITH 6 BOLTS	-	-	1
7	1	03022400	FLANGE.	1	1	1
7	2	00307200	TAPPET.	3	3	6
7	3	03151000	RUBBER SHELL.	3	3	6
7	4	03079000	DISC.	3	3	6
7	5	50017200	DISC 13	3	3	6
7	6	50023900	HEXAGON NUT M 12.	3	3	6
7	7	50053800	ALLEN SCREW M 10X25	4	4	4
7	8	50002900	SPRING WASHER 10.	4	4	4
7	9	03023000	COUNTER FLANGE.	1	1	-
7	9	03035800	COUNTER FLANGE.	-	-	1
7	10	50004900	THREADED PIN M 10X16.	1	1	1
<u>FLEXIBLE COUPLING ON GOVERNOR SIDE</u> =====						
7	1	00329500	FLANGE WITH 3 BOLTS	1	1	-
7	1	00341801	FLANGE WITH 6 BOLTS *	-	-	1
7	1	03004201	FLANGE.	1	1	1
<u>FREE SHAFT END</u> =====						
7	13	03027300	FREE SHAFT END.	1	1	1
7	13A	50011700	FITTING KEY A 8X7X63.	1	1	1
7	14	50053800	ALLEN SCREW M 10X25	4	4	4
7	15	50002900	SPRING WASHER 10.	4	4	4

* WHEN REPLACING BOTH GEARWHEELS OF ENGINE E 89 ON CRANKSHAFT OR CAMSHAFT, ONLY USE HARDENED GEARWHEELS WITH PART-NO.03039701/03039402

Quote when ordered

Quant. for Type

Table No.	Item No.	Part/ Ordering No.	DESIGNATION	Quant. for Type		
				U	S	W
			<u>CLUTCH FOR VEHICLE ENGINES</u> =====			
7	27	00332700	CONNECTING FLANGE WITH ITEM NO.28 .	1	1	1
7	27	03029300	CONNECTING FLANGE	1	1	1
7	28	50013800	GROOVED BALL BEARING 6204-2RS . . .	1	1	1
7	29	50002900	SPRING WASHER 10.	3	3	3
7	30	50054100	ALLEN SCREW M 10X30	3	3	3
7	31	40004000	PRESSURE PLATE.	1	1	1
7	31	40017400	CLUTCH DISC	1	1	1
7	31	40015000	BALL BEARING DISCONNECTOR	1	1	1
7	31	40009200	SHAPE SPRING.	2	2	2
7	32	50026700	HEXAGON SCREW M 8X15.	6	6	6
7	33	50002800	SPRING WASHER 8	6	6	6
7	35	00332401	CLUTCH HOUSING WITH BALL BEARING. DISCONNECTOR AND ITEM NO.35-56	1	1	1
7	36	50007900	GREASE NIPPLE CM 8X1.	2	2	2
7	37	03029402	DISCONNECTOR SHAFT.	1	1	1
7	38	03030201	FORKED LEVER.	1	1	1
7	39	50020000	CIRCLIP 18X1,2.	1	1	1
7	39A	50017600	DISC 19	1	1	1
7	40	03156200	RETURN SPRING	1	1	1
7	41	50035300	PIN 6X28.	2	2	2

Quote when ordered

Quant. for Type

Table No.	Item No.	Part/ Ordering No.	DESIGNATION	SS W	IN W	CS W
7	42	50034400	PIN 3,5X28.	2	2	2
7	43	00332602	SWITCH LEVER WITH ITEM NO.43-48 . .	1	1	1
7	44	03032000	HUB FOR CONTR.LEVER	1	1	1
7	45	50051400	ALLEN SCREW M 8X12.	2	2	2
7	46	50002800	SPRING WASHER 8	2	2	2
7	47	50027000	HEXAGON SCREW M 8X25.	1	1	1
7	48	50022900	HEXAGON NUT M 8	1	1	1
7	49	03262100	ADJUSTING PLATE	1	1	1
7	50	50029100	HEXAGON SCREW M 10X20	2	2	2
7	51	50016900	DISC 10,5	2	2	2
7	53	50059300	PIN 6X16.	2	2	2
7	54	03032200	PROTECTION SCREEN	1	1	1
7	55	03029700	SHIM.	5	5	5
7	56	40002800	BLIND RIVET 4X15.	5	5	5
7	57	00332501	BEARING FLANGE WITH ITEM NO.57-65 .	1	1	1
7	57	03031701	BEARING FLANGE.	1	1	1
7	58	03031303	CLUTCH SHAFT.	1	1	1
7	59	50015000	GROOVED BALL BEARING 6307-2 RS. . .	1	1	1
7	60	40027600	CIRCLIP J 80X2,5V	1	1	1
7	61	50021100	CIRCLIP 35X1,5.	1	1	1
7	62	50017300	DISC B 13	1	1	1
7	63	50002900	SPRING WASHER 10.	1	1	1
7	64	50029300	HEXAGON SCREW M 10X30	1	1	1
7	65	50012000	FITTING KEY A 10X8X50	1	1	1
7	66	50053800	ALLEN SCREW M 10X25	4	4	4
7	66A	50030100	HEXAGON SCREW M 10X65	6	6	6
7	67	50002900	SPRING WASHER 10.	6	6	6
7	69	03156300	COVER RING *.	1	1	1
7	70	50002700	SPRING WASHER 6 *	6	6	6
7	71	50025300	HEXAGON SCREW M 6X8 *	6	6	6
			BELT PULLEY =====			
7	72	03025501	BELT PULLEY 125 DIA.	1	1	1
7	73	03025601	BELT PULLEY 150 DIA.	1	1	1
7	74	03025701	BELT PULLEY 175 DIA.	1	1	1
7	75	50029200	HEXAGON SCREW M 10X25	4	4	4
7	76	50002900	SPRING WASHER 10.	4	4	4

* RECOMMENDABLE IF ENGINE IS STRONGLY EXPOSED TO DUST

Quote when ordered

Quant. for Type

Table No.	Item No.	Part/ Ordering No.	DESIGNATION	Quant. for Type		
				W	SS	SS
			REDUCTION GEAR WITH DISCONNECTABLE =====			
			F&S-CLUTCH K 180 ON FLYWHEEL-SIDE =====			
7	27	00332700	CONNECTING FLANGE WITH ITEM NO.28 .	1	1	1
7	27	03029300	CONNECTING FLANGE	1	1	1
7	28	50013800	GROOVED BALL BEARING 6204-2RS . . .	1	1	1
7	29	50002900	SPRING WASHER 10.	3	3	3
7	30	50054100	ALLEN SCREW M 10X30	3	3	3
7	31	40004000	PRESSURE PLATE.	1	1	1
7	31	40017400	CLUTCH DISC	1	1	1
7	31	40015000	BALL BEARING DISCONNECTOR	1	1	1
7	31	40009200	SHAPE SPRING.	2	2	2
7	32	50026700	HEXAGON SCREW M 8X15.	6	6	6
7	33	50002800	SPRING WASHER 8	6	6	6
7	35	00332401	CLUTCH HOUSING WITH BALL BEARING. .	1	1	1
			DISCONNECTOR AND ITEM NO.35-56			
7	36	50007900	GREASE NIPPLE CM 8X1.	2	2	2
7	37	03029402	DISCONNECTOR SHAFT.	1	1	1
7	38	03030201	FORKED LEVER.	1	1	1
7	39	50020000	CIRCLIP 18X1,2.	1	1	1
7	39A	50017600	DISC 19	1	1	1
7	40	03156200	RETURN SPRING	1	1	1
7	41	50035300	PIN 6X28.	2	2	2
7	42	50034400	PIN 3,5X28.	2	2	2
7	43	00332602	SWITCH LEVER WITH ITEM NO.43-48 . .	1	1	1
7	44	03032000	HUB FOR CONTR.LEVER	1	1	1
7	45	50051400	ALLEN SCREW M 8X12.	2	2	2
7	46	50002800	SPRING WASHER 8	2	2	2
7	47	50027000	HEXAGON SCREW M 8X25.	1	1	1
7	48	50022900	HEXAGON NUT M 8	1	1	1
7	49	03262100	ADJUSTING PLATE	1	1	1
7	50	50029100	HEXAGON SCREW M 10X20	2	2	2
7	51	50016900	DISC 10,5	2	2	2
7	53	50059300	PIN 6X16.	2	2	2
7	54	03032200	PROTECTION SCREW.	1	1	1
7	55	03029700	SHIM.	5	5	5
7	56	40002800	BLIND RIVET 4X15.	5	5	5
7	57A	00335900	BEARING FLANGE W.ITEM NO.57A,58A-61	1	1	1

Quote when ordered

Quant. for 1 year

Table No.	Item No	Part-/ Ordering No.	DESIGNATION	W	W	W
7	57A	03037200	BEARING FLANGE.	1	1	1
7	58A	03034100	DRIVING SHAFT	1	1	1
7	59	50015000	GROOVED BALL BEARING 6307-2RS . . .	1	1	1
7	60	40027600	CIRCLIP J 80X2,5V	1	1	1
7	61	50021100	CIRCLIP 35X1,5.	1	1	1
7	62	50017300	DISC B 13	1	1	1
7	63	50002900	SPRING WASHER 10.	1	1	1
7	64	50029300	HEXAGON SCREW M 10X30	1	1	1
7	65A	50018000	DISC SPRING 6X11.	1	1	1
7	66	50053800	ALLEN SCREW M 10X25	4	4	4
7	66A	50030100	HEXAGON SCREW M 10X65	6	6	6
7	67	50002900	SPRING WASHER 10.	6	6	6
7	68	40039400	REDUCTION GEAR 2 1 **	1	1	1
7	68	40039500	REDUCTION GEAR 1 1,5 **	1	1	1
7	68	40039600	REDUCTION GEAR 1 1,8 **	1	1	1
7	68A	50042000	STUD M 10X95.	4	4	4
7	68B	50002900	SPRING WASHER 10.	4	4	4
7	68C	50023500	HEXAGON NUT M 10.	4	4	4
7	69	03156300	COVER RING *.	1	1	1
7	70	50002700	SPRING WASHER 6 *	6	6	6
7	71	50025300	HEXAGON SCREW M 6X8 *	6	6	6
			CRANK JAW AND STARTING HANDLE IN =====			
			CASE OF MOUNTED BELT PULLEY GOV.SID =====			
7	77	03025000	CRANK JAW	1	1	1
7	78	50053800	ALLEN SCREW M 10X25	2	2	2
7	79	50054100	ALLEN SCREW M 10X30	2	2	2
7	80	00302502	STARTING HANDLE	1	1	1
7	81	03026600	STEP BEARING PLATE.	1	1	1
			SAFETY STARTING HANDLE =====			
7	82	03029100	SUPPORT	1	1	1
7	83	50029400	HEXAGON SCREW M 10X35	3	3	3
7	84	50002900	SPRING WASHER 10.	3	3	3
7	80	00302803	STARTING HANDLE	1	1	1

* RECOMMENDABLE IF ENGINE IS STRONGLY EXPOSED TO DUST

** ACCORDING TO REQUIREMENTS

Table No.	Item No.	Part./ Ordering No.	DESIGNATION	Quant. for Type		
				80 W	85 W	87 W
			<u>SAFETY STARTING HANDLE</u> =====			
			WITH SUPPORT =====			
7	80	00302803	STARTING HANDLE	1	1	1
7	85	03081101	GUIDING SHELL	1	1	1
7	86	50016700	DISC 8,4.	4	4	4
7	87	50052100	ALLEN SCREW M 8X25.	4	4	4
7	85	03071500	GUIDING SHELL (BOMAG)	1	1	1
			<u>REDUCTION GEAR 1 3 AND 1 4</u> =====			
8	1	00329600	GOVERNOR HOUSING WITH ITEM NO.2-3B.	1	1	1
8	2	50045600	OIL SEAL B 70X85X8.	1	1	1
8	3	50015500	GROOVED BALL BEARING 16014.	1	1	1
8	3A	03168901	CAP SCREW	1	1	1
8	3B	40023600	WASHER 36X44X4.	1	1	1
8	4	03028101	GEARWHEEL	1	1	-
8	4	03039701	GEARWHEEL	-	-	1
8	5	03021100	DISC	1	1	1
8	6	50056200	ALLEN SCREW M 12X25	1	1	1
8	7	03025300	HUB	1	1	1
8	8	03028001	GEARWHEEL ON CRANKSHAFT 1 3	1	1	1
8	8	03028301	GEARWHEEL ON CRANKSHAFT 1 4	1	1	1
8	9	50051900	ALLEN SCREW M 8X20.	6	6	6
8	10	50002800	SPRING WASHER 8	6	6	6
8	11	50014200	GROOVED BALL BEARING 6206	1	1	1
8	12	03027403	GEARWHEEL FOR CAMSHAFT	1	1	-
8	12	03039402	GEARWHEEL FOR CAMSHAFT	-	-	1
8	13	03027901	GEARWHEEL ON CAMSHAFT 1 3	1	1	1
8	13	03028201	GEARWHEEL ON CAMSHAFT 1 4	1	1	1
8	14	50054100	ALLEN SCREW M 10X30	4	4	4
8	15	50002900	SPRING WASHER 10	4	4	4
8	16	03126400	COVER FOR GOVERNOR HOUSING.	1	1	1
8	17	03126500	GASKET	1	1	1
8	18	50026700	HEXAGON SCREW M 8X15.	6	6	6
8	19	50000900	JOINT A 8X11,5	6	6	6
8	20	03222200	CRANK JAW	1	1	1
8	21	50053800	ALLEN SCREW M 10X25	2	2	2

Quote when ordered

Quant. for Type

Table No.	Item No.	Part/ Ordering No.	DESIGNATION	Quant. for Type		
				80	85	88
			REDUCTION GEAR 1 L,45 =====			
			ON GOVERNOR SIDE =====			
8	1	00335700	GOVERNOR HOUSING 1 1,45 W.I.NO.2-3B	1	1	1
8	2	50045600	OIL SEAL B 70X85X8	1	1	1
8	3A	03168901	CAP SCREW	1	1	1
8	3B	40023600	WASHER 36X44X4	1	1	1
8	16	00335800	BEARING GOVER WITH ITEM NO.2.	1	1	1
8	2	50045600	OIL SEAL B 70X85X8	1	1	1
8	12	03039601	GEARWHEEL	1	1	1
8	3	50047000	CYL.ROLLER BEARING NJ 207	1	1	1
8	3	50015500	GROOVED BALL BEARING 16014	1	1	1
8	17	03160700	GASKET	1	1	1
8	10	50002800	SPRING WASHER 8	6	6	6
8	18	50026800	HEXAGON SCREW M 8X20	6	6	6
8	4	03039701	GEARWHEEL ON CRANKSHAFT	1	1	1
			POWER-TAKE-OFF ON CRANKSHAF1 =====			
8	1	00329800	GOVERNOR HOUSING WITH ITEM NO.2-3B	1	1	1
8	2	50045600	OIL SEAL B 70X85X8	2	2	2
8	3A	03168901	CAP SCREW	1	1	1
8	3B	40023600	WASHER 36X44X4	1	1	1
8	4	03028401	GEARWHEEL	1	1	1
8	6	50054900	ALLEN SCREW M 10X50	1	1	1
8	5	40033200	USITRING 12,7X18X1,5	1	1	1
8	3	50015500	GROOVED BALL BEARING 16014.	1	1	1
			OILBATH-AIRFILTER =====			
8	23	40089100	OILBATH-AIRFILTER	1	1	1
8	23	40020400	OILBATH-AIRFILTER *	-	-	1
8		40089300	RAIN PROTECTION CAP	1	1	1
8		40046400	RAIN PROTECTION CAP *	-	-	1
8	24	03040000	INTERMEDIATE FLANGE	-	-	1
8	25	50041100	STUD M 10X40	-	-	1
8	25	50041800	STUD M 10X75 **	-	-	1
8	26	50053600	ALLEN SCREW M 10X20	-	-	1
8	26	50055200	ALLEN SCREW M 10X60 **	-	-	1
8	27	03150700	GASKET	1	1	1
8	27	03230000	GASKET	-	-	1
8	28	50029100	HEXAGON SCREW M 10X20	2	2	-

* FOR ENGINES ABOVE N=2000RPM
 ** ONLY WHEN HEATER FLANGE IS USED

Quote when ordered

Quant. for Type

Table No.	Item No.	Part/ Ordering No.	DESIGNATION	Quant. for Type		
				W 80	W 85	W 88
8	28	50029200	HEXAGON SCREW M 10X25	-	-	1
8	29	50002900	SPRING WASHER 10.	2	2	2
8	30	50023500	HEXAGON NUT M 10.	-	-	1
			<u>STARTER GEARING</u>			
8	31	03156100	GEARING	1	1	-
8	31	03156101	GEARING	-	-	1
8	32	50052700	ALLEN SCREW M 8X50.	4	4	-
8	33	50002800	SPRING WASHER 8	4	4	-
			<u>ELECTRICAL EQUIPMENT</u>			
8	34	40000400	ELECTRIC STARTER 12 V BOSCH	1	1	1
8	35	50042100	STUD M 12X22.	2	2	2
8	36	50003000	SPRING WASHER 12.	2	2	2
8	37	50023900	HEXAGON NUT M 12.	2	2	2
8	38	03030602	SUPPORT FOR DYNAMO.	1	1	1
8	40	50040600	STUD M 10X30.	2	2	2
8	41	50016900	DISC 10,5	2	2	2
8	43	50023500	HEXAGON NUT M 10.	2	2	2
8	44	40088400	DYNAMO 12V BOSCH	1	1	1
8	44A	40036300	REGULATOR BOSCH	1	1	1
8	44B	50025700	HEXAGON SCREW M 6X15	2	2	2
8	45	03030901	V-BELT PULLEY ON DYNAMO	1	1	1
8	46	40092800	STRAP 100/20.	2	2	2
8	50	03030800	V-BELT PULLEY ON CAMSHAFT	1	1	1
8	51	50054400	ALLEN SCREW M 10X35	2	2	2
8	52	50008700	V-BELT 10X950	1	1	1
8	53	40009900	GLOW PLUG BERU	1	1	1
8	54	40011200	GLOW CONTROLLER	1	1	1
8	55	40012000	HEATER FLANGE	1	1	1
8	56	03150700	GASKET	1	1	1
8	57	40009500	GLOW STARTING SWITCH	1	1	1
8	57	40015400	PLASTIC BUTTON	1	1	1
8	58	40025300	SWITCH BOX	1	1	1
8	59	40001500	INDICATOR LAMP	1	1	1
8	59	40009700	BULB 12V-2 W	1	1	1

Quote when ordered

Quot. for type

Table No.	Item No.	Part/ Ordering No.	DESIGNATION	Quot. for type		
				89	90	91
8	60	50041600	STUD M10X55 *	2	2	2
8	61	50002900	SPRING WASHER 10.	2	2	2
8	62	50023500	HEXAGON NUT M 10.	2	2	2
8	63	03029500	INSTRUMENT PANEL.	1	1	1
6	63	03029500	INSTRUMENT PANEL.	1	1	1
<u>EXHAUST BOX</u>						
6	64	40091900	EXHAUST SILENCER R 1	1	1	-
8	64	40050900	EXHAUST SILENCER R 1 1/4.	-	-	1
<u>DYNAMO 12 V WITH STARTER</u>						
<u>FOR MARINE ENGINES</u>						
9	1	03023501	SUPPORT FOR DYNAMO.	1	1	1
9	2	50029700	HEXAGON SCREW M 10X50	3	3	3
8	44	40088400	DYNAMO 12V BOSCH.	1	1	1
8	44A	40036300	REGULATOR BOSCH	1	1	1
8	44B	50025700	HEXAGON SCREW M 6X15	2	2	2
8	45	03030901	V-BELT PULLEY ON DYNAMO	1	1	1
8	46	40092800	STRAP 100/20	2	2	2
8	50	03030800	V-BELT PULLEY ON CAMSHAFT	1	1	1
8	50A	03028801	INTERMEDIATE PIECE.	1	1	1
8	51	50054700	ALLEN SCREW M 10X45	2	2	2
8	52	50008700	V-BELT 10X950	1	1	1
<u>DYNAMO 12 V FOR ENGINES AND</u>						
<u>EXTERNAL BEARING</u>						
8	40	50040600	STUD M 10X30.	2	2	2
8	41	50016900	DISC 10,5	2	2	2
8	43	50023500	HEXAGON NUT M 10.	2	2	2
8	44	40088400	DYNAMO 12V BOSCH.	1	1	1
8	44A	40036300	REGULATOR BOSCH	1	1	1
8	44B	50025700	HEXAGON SCREW M 6X15.	2	2	2

OILBATH-AIRFILTER
 *FOR ENGINE E80 AND E85 WITH HEATER FLANGE
 FOR ENGINE E89 WITH HEATER FLANGE AND

Quote when ordered

Quant. for Type

Table No.	Item No.	Part/ Ordering No.	DESIGNATION	Quant. for Type		
				W	W	W
8	45	03030901	V-BELT PULLEY ON DYNAMO	1	1	1
8	46	40092800	STRAP 100/20	2	2	2
9	3	03031000	V-BELT PULLEY ON CAMSHAFT	1	1	1
8	52	50008700	V-BELT 10X950	1	1	1
<u>DYNAMO 12V WITH STARTER IN CASE OF</u>						
<u>POWER-TAKE-OFF GOVERNOR SIDE</u>						
9	4	03031101	V-BELT PULLEY ON CAMSHAFT	1	1	1
9	5	03029600	DYNAMO SUPPORT PIECE	1	1	1
8	40	50041300	STUD M 10X50	2	2	2
8	52	50008600	V-BELT 10X900	1	1	1
8	38	03030602	SUPPORT FOR DYNAMO.	1	1	1
8	41	50016900	DISC 10,5	2	2	2
8	43	50023500	HEXAGON NUT M 10	2	2	2
8	44	40088400	DYNAMO 12V BOSCH	1	1	1
8	44A	40036300	REGULATOR BOSCH	1	1	1
8	44B	50025700	HEXAGON SCREW M 6X15	2	2	2
8	45	03030901	V-BELT PULLEY ON DYNAMO	1	1	1
8	46	40092800	STRAP 100/20	2	2	2
<u>DYNAMO 12 V FOR ENGINES WITH</u>						
<u>REDUCTION GEAR 1 3,1 4</u>						
9	5	03029600	DYNAMO SUPPORT PIECE.	1	1	1
8	38	03030602	SUPPORT FOR DYNAMO	1	1	1
8	40	50030200	STUD M 10X70.	2	2	2
		03354300	SPACE TUBE	2	2	2
8	41	50016900	DISC 10,5	2	2	2
8	43	50023500	HEXAGON NUT M 10	2	2	2
8	44	40042400	DYNAMO 12V BOSCH	1	1	1
8	44A	40036300	REGULATOR BOSCH	1	1	1
8	44B	50025700	HEXAGON SCREW M 6X15	2	2	2

Quote when ordered

Quant. for Type

Table No.	Item No.	Part/ Ordering No	DESIGNATION	Quant. for Type		
				W	W	W
8	45	03030901	V-BELT PULLEY ON DYNAMO	1	1	1
8	46	40092800	STRAP 100/20	2	2	2
8	50	03030800	V-BELT PULLEY ON CAMSHAFT	1	1	1
8	51	50054400	ALLEN SCREW M 10X35	2	2	2
8	52	50008800	V-BELT 10X1100.	1	1	1
<u>STARTING DEVICE ON FLYWHEEL-SIDE</u>						
9	6	00335601	BEARING HOUSING WITH ITEM NO.7-16	1	1	1
9	7	03011300	GEARWHEEL WITH SHAFT.	1	1	1
9	8	03008500	PINION SHAFT.	1	1	1
9	9	50009500	GROOVED DOWEL PIN 8X45.	1	1	1
9	10	03175301	BEARING RING.	3	3	3
9	11	50009800	BALL 6 MM III	49	49	49
9	12	J3012401	INTERMEDIATE RING	1	1	1
9	13	50020400	CIRCLIP 24X1,2.	2	2	2
9	14	03159100	PRESSURE SPRING	4	4	4
9	15	50007800	GREASE NIPPLE AM 8X1.	1	1	1
9	16	03079400	THREADED PIN M 8X1.	3	3	3
9	17	03037400	CRANK JAW	1	1	1
9	18	50030500	HEXAGON SCREW M 10X100.	2	2	2
9	19	50016900	DISC 10,5	2	2	2
9	20	50002900	SPRING WASHER 10	2	2	2
9	21	00302902	STARTING HANDLE	1	1	1
9	22	50005100	THREADED PIN AM 10X25	1	1	1
<u>DECOMPRESSION DEVICE</u>						
<u>LIFTING MAGNET</u>						
9	23	00653400	ANGLE	1	1	1
9	24	40012400	LIFTING MAGNET	1	1	1
9	25	50040200	STUD M 10X20	1	1	1
9	26	50023800	HEXAGON SCREW AM 10	1	1	1
9	28	50052200	ALLEN SCREW M 8X30.	1	1	1
9	28	50052300	ALLEN SCREW M 8X35	2	2	2
9	29	03151100	CONNFECTION ROD.	1	1	1
9	30	50000600	PIN 4 H11X16X14	2	2	2
9	31	50000400	BARE DISC 4	2	2	2
9	32	50035900	PIN 1X18.	2	2	2
9	33	03023700	LEVER	1	1	1

Quote when ordered

Quant. for Type

Table No	Item No	Part/ Ordering No.	DESIGNATION	Quant. for Type		
				E 80	E 85	E 89
9	34	50026800	HEXAGON SCREW M 8X20	1	1	1
9	35	03027200	SHAFT FOR DECOMPRESSION	1	1	1
9	36	03034500	DISC	2	2	2
9	37	03160800	SUPPORT FOR DYNAMO.	1	1	1
9	38	03160900	SUPPORT FOR GOV. SWITCH.	1	1	1
			EXHAUST BOX =====			
9	40	00310200	EXHAUST BOX	1	1	1
9	41	50002200	GASKET 36 CU-AS 2,5	1	1	1
9	42	03089300	EXHAUST MANIFOLD.	1	1	-
9	42	03102300	EXHAUST MANIFOLD.	-	-	1
9	43	50027300	HEXAGON SCREW M 8X30.	2	2	2
9	44	50023000	HEXAGON NUT M 8 MS	2	2	2
9	45	50026800	HEXAGON SCREW M 8X20	2	2	2
9	46	03176300	ELBOW	1	1	1
9	47	03298800	TWIN-SCREW FLANGE A 32X58	1	1	1
9	49	50016700	DISC 8,4	2	2	2
9	50	50026800	HEXAGON SCREW M 8X20.	2	2	2
			MOUNTING PARTS FOR BOWDEN-CONTROL =====			
9	51	03108000	CONSOLE	1	1	1
9	52	03072500	SPEED CONTROL LEVER	1	1	1
9	53	03074600	LOCK	1	1	1
			MOUNTING PARTS F.CENTR.BELT PULLEY =====			
9	54	03025200	NUT	1	1	1
9	55	03198600	SECURITY PLATE	1	1	1
9	56	50031900	HEXAGON SCREW M 12X80	1	1	1
9	57	50003600	SPRING WASHER B 12.	1	1	1
			CENTRIFUGAL BELT PULLEY =====			
9	58	40008600	CENTRIFUGAL BELT PULLEY	1	1	1
9	59	40008800	CENTRIFUGAL BELT PULLEY	1	1	1
			EXTERNAL BEARING ON GOVERNOR SIDE =====			
10	1	00562200	GOVERNOR HOUSING. WITH ITEM NO.1-2	1	1	1
10	1A	03168901	CAP SCREW	1	1	1

Quote when ordered

Quant. for Type

Table No.	Item No.	Part / Ordering No.	DESIGNATION	Q0	Q1	Q2
10	18	40023600	WASHER 36X44X4.	1	1	1
10	2	50045700	OIL SEAL B 75X90X8.	1	1	1
10	3	03039701	GEARWHEEL FOR CRANKSHAFT.	1	1	1
10	4	03039402	GEARWHEEL FOR CAMSHAFT	1	1	1
10	5	03022800	FLANGED SHAFT	1	1	1
10	6	50054100	ALLEN SCREW M 10X30	4	4	4
10	7	50002900	SPRING WASHER 10.	4	4	4
10	8	50047200	CYL.ROLLER BEARING NJ 306	1	1	1
10	9	50045100	OIL SEAL B 30X50X12	1	1	1
10	10	50011500	FITTING KEY A 8X7X35	1	1	1
10	11	03022700	FLANGE HUB	1	1	1
10	12	50004800	THREADED PIN AM 10X15	1	1	1
10	13	50053800	ALLEN SCREW M 10X25	4	4	4
10	14	50002900	SPRING WASHER 10.	4	4	4
AUTOMATIC DECOMPRESSION =====						
10	16	00328300	DECOMPRESSION SHAFT	1	1	1
10	21	03027600	GEARWHEEL	1	1	1
10	22	50034100	PIN 3X16	1	1	1
10	23	03026400	PIN	1	1	1
10	24	40021600	WASHER 2,5X4,9X1,2.	2	2	2
10	25	03151200	PLATE SPRING.	1	1	1
10	26	03151300	SECURITY PLATE	1	1	1
10	27	50025500	HEXAGON SCREW M 6X12.	2	2	2
10	28	00335200	PUSHROD WITH FLANGED TOP.	1	1	1
10	29	03000401	CAP	1	1	1
10	30	03174402	PRESSURE SPRING	1	1	1
10	31	40030900	CIRCLIP SEEGER SW 10.	1	1	1
SPEED CONTROL LEVER WITH SEGMENT =====						
10	33	03087600	ADJUSTING PLATE *	1	1	1
10	33	03076100	ADJUSTING PLATE **	1	1	1
10	34	03074600	LOCK	1	1	1
10	35	03072200	HANDLEVER	1	1	1
10	36	03075900	PAWL.	1	1	1
10	37	03217700	SPRING	1	1	1
10	38	50026000	HEXAGON SCREW M 6X30.	1	1	1
10	39	50022700	HEXAGON NUT M 6	1	1	1
10	40	50046700	CYL.SCREW 3X12	1	1	1

* NO LOAD,N= 1700,N=2000

** NO LOAD,N= 2000,N=2500

Table No.	Item No.	Quote when ordered		Quant. for Type		
		Part/ Ordering No.	DESIGNATION	E 80	E 85	E 88
10	41	50046800	CYLINDER SCREW 3X16	1	1	1
10	42	03286200	ADJUSTING PLATE *	1	1	1
10	43	50046700	CYLINDER SCREW 3X12	2	2	2
10	44	03076200	ADJUSTING PLATE	1	1	1
10	45	50046700	CYLINDER SCREW 3X12	2	2	2
10	46	00306900	BELT GUARD	1	1	1
			* N=1500, N=2500			

Table 1-10

Table 1

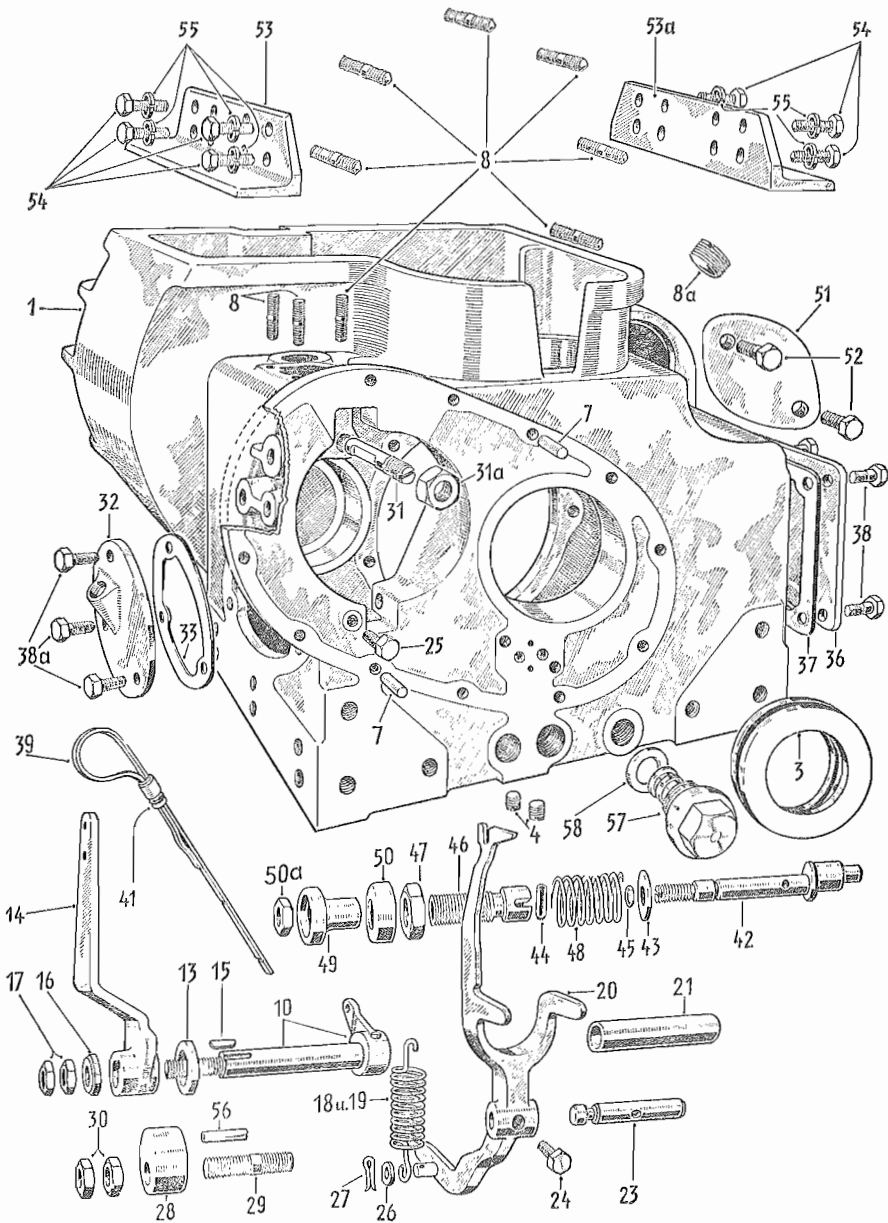


Table 2

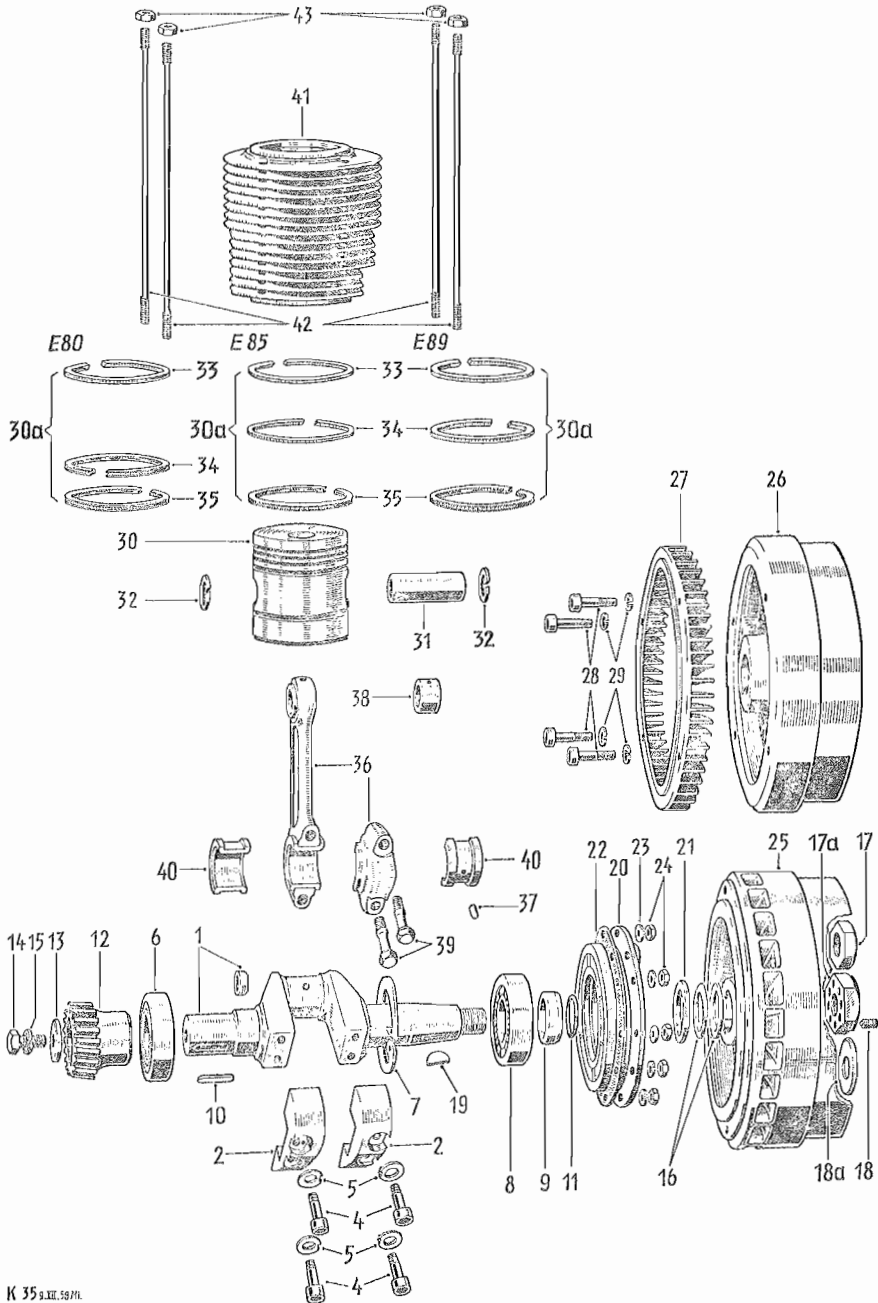


Table 3

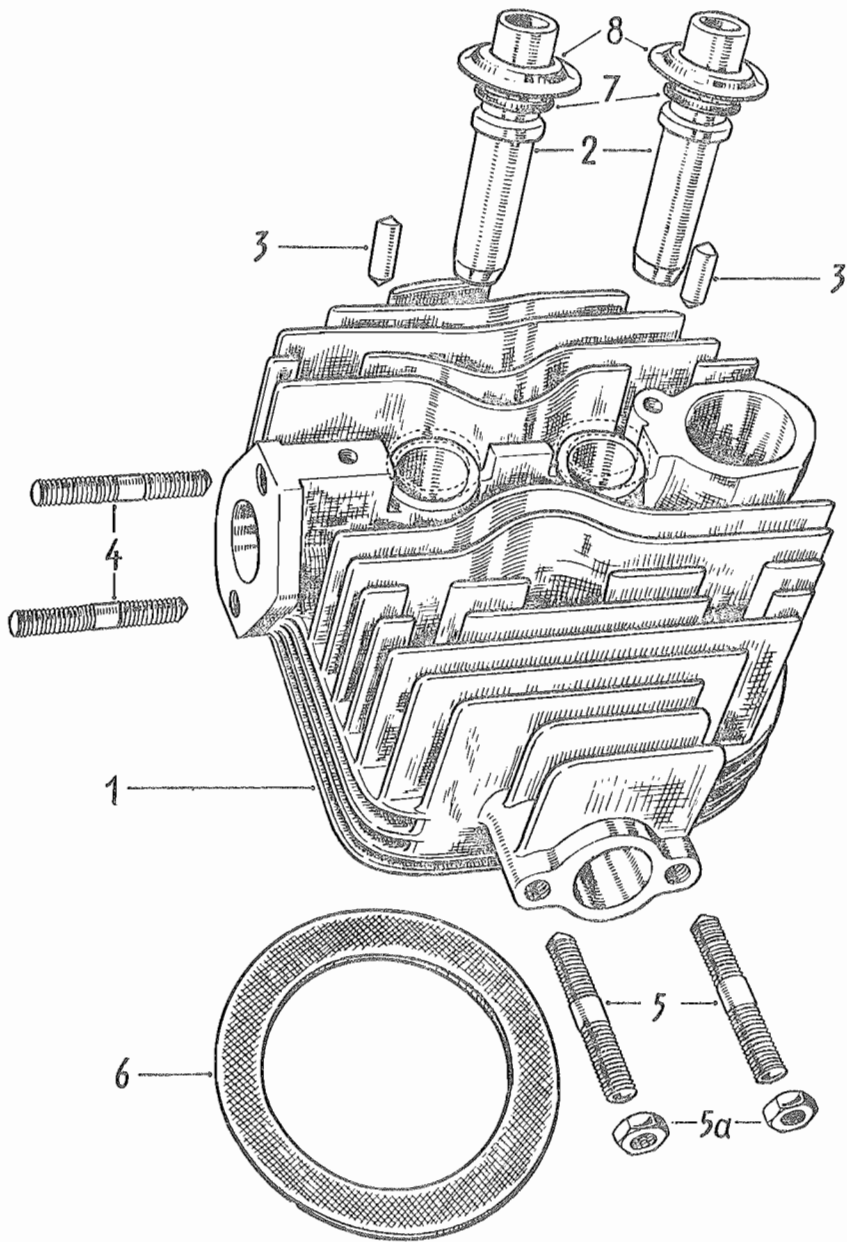


Table 4

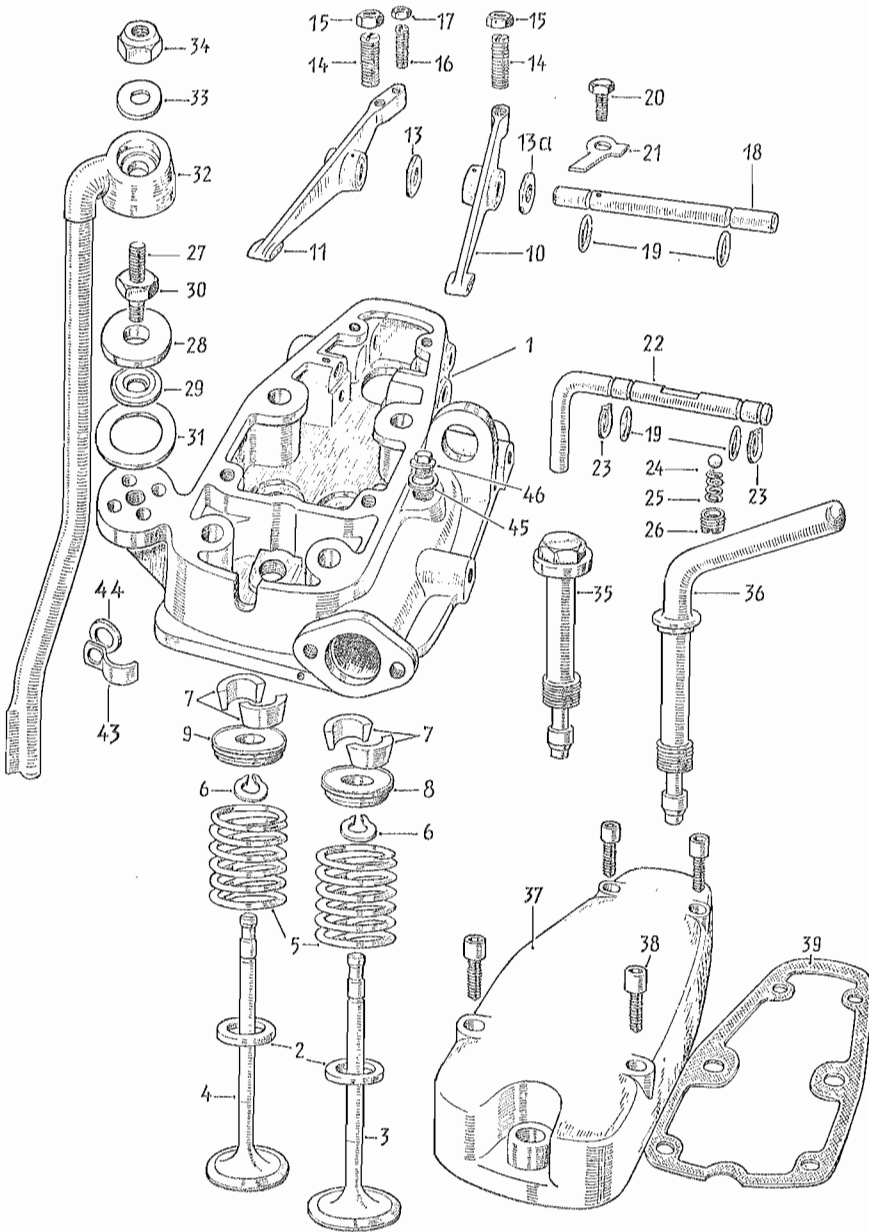


Table 5

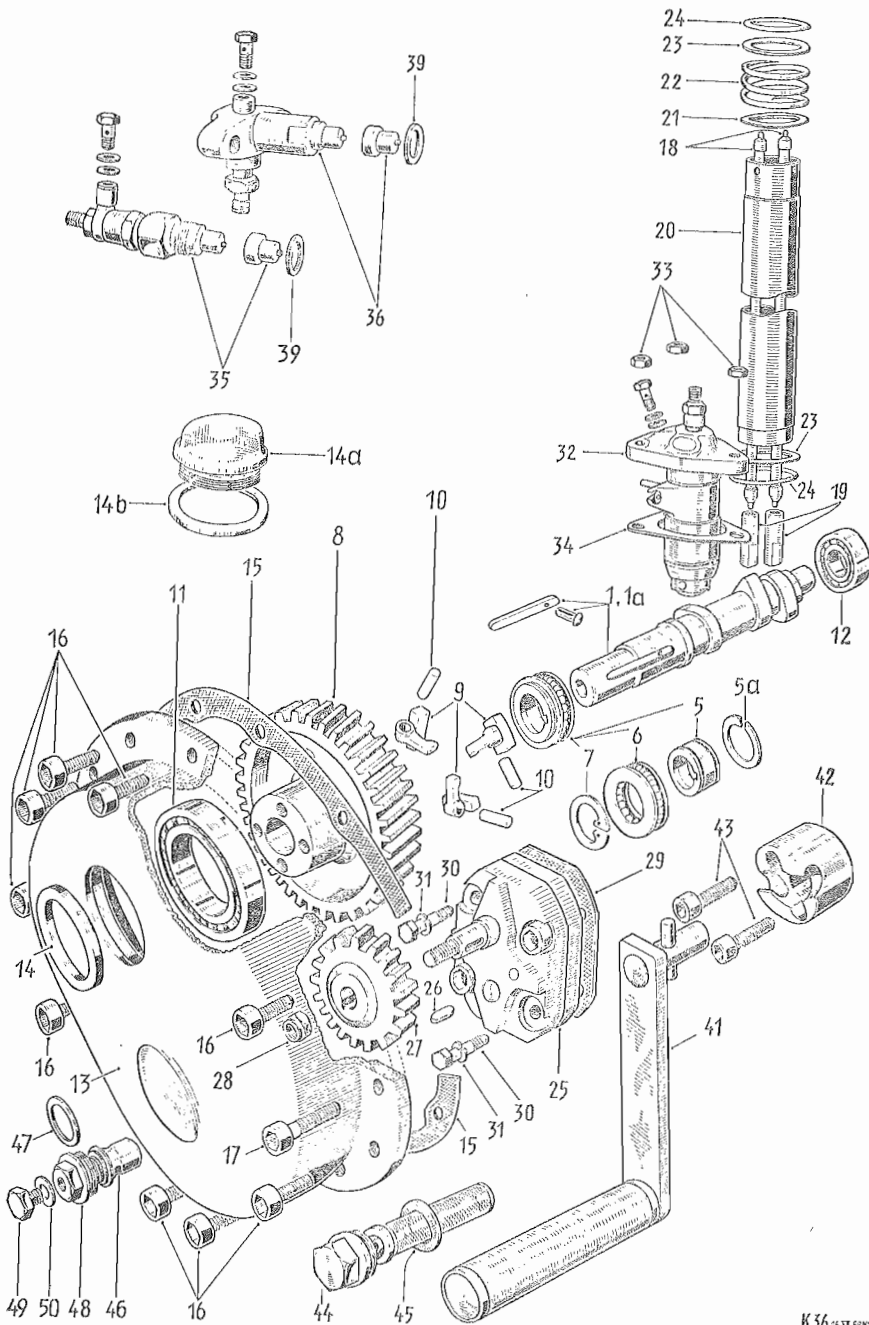


Table 6

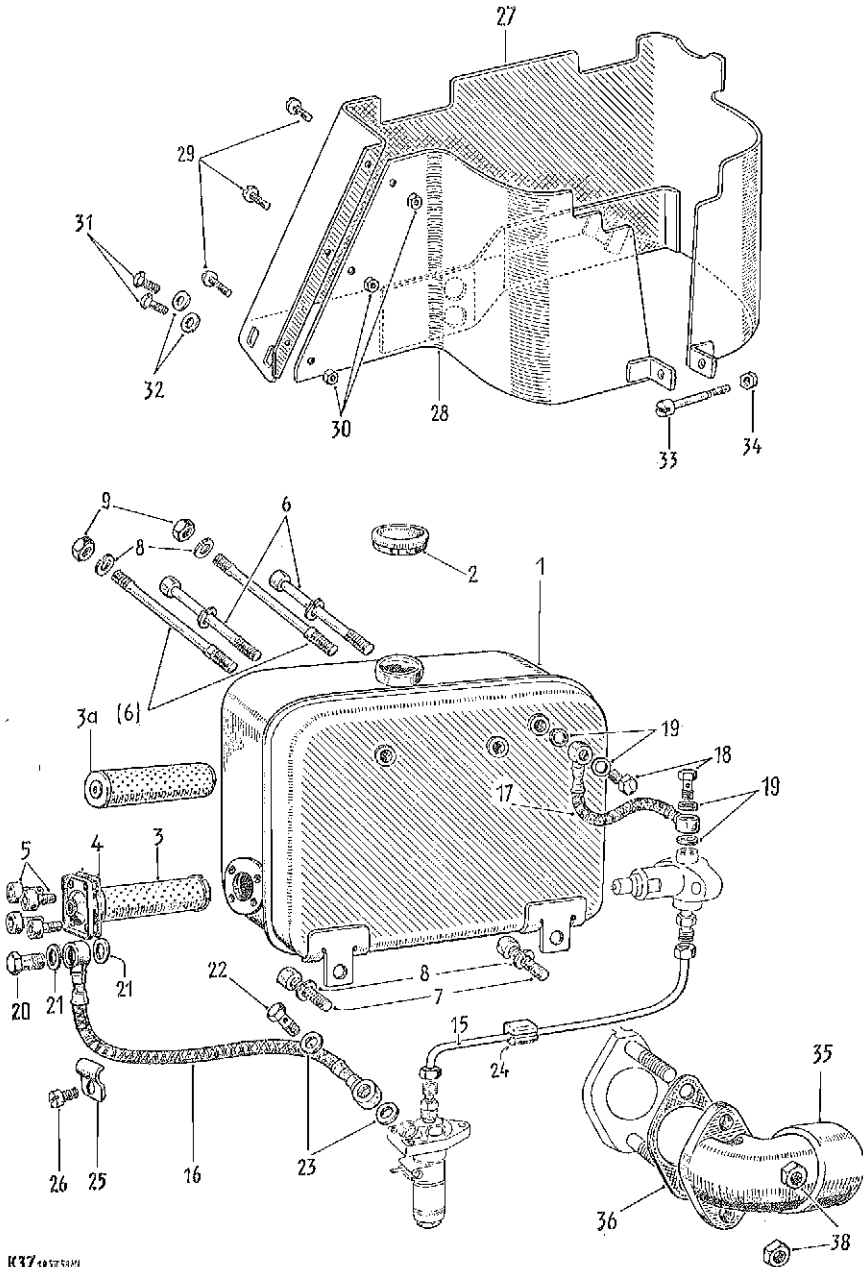


Table 7

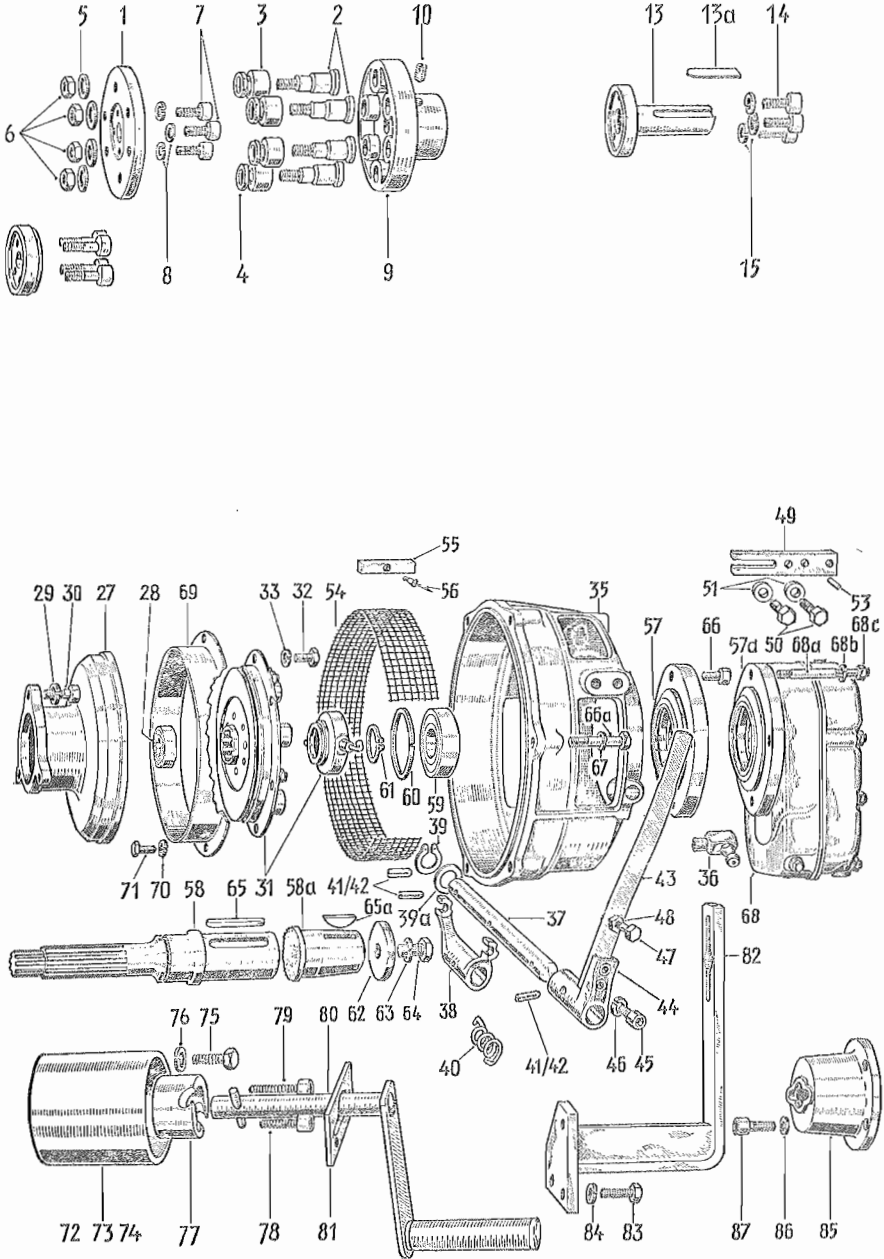


Table 8

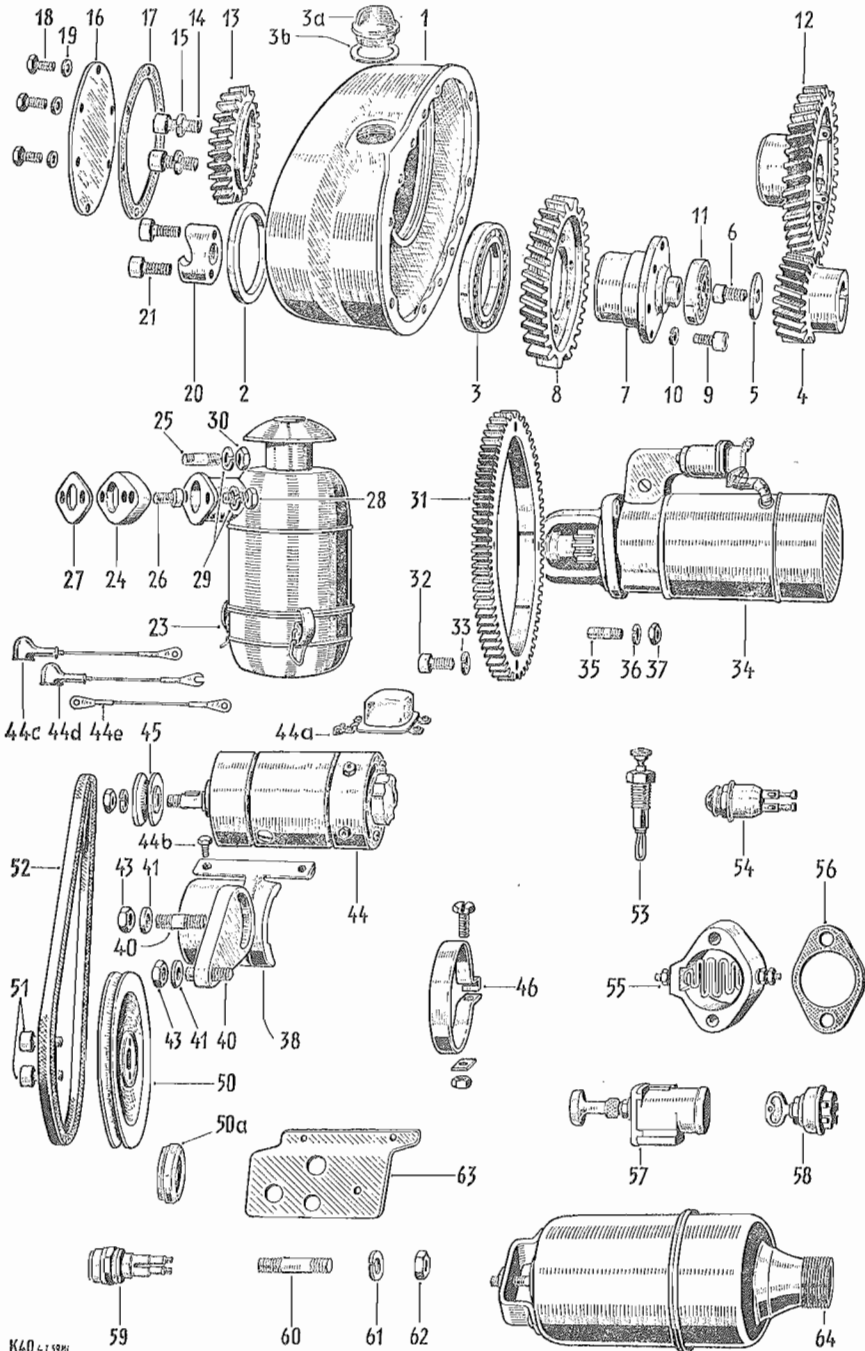


Table 9

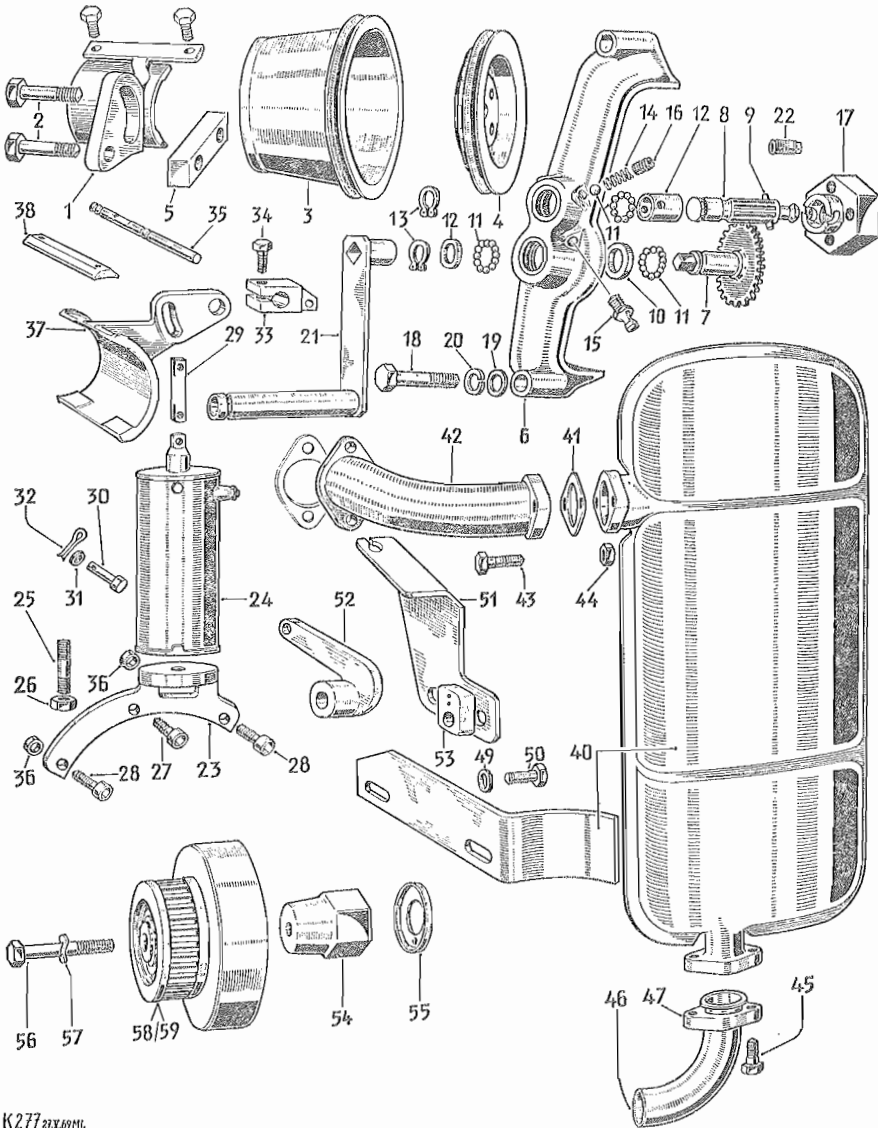


Table 10

